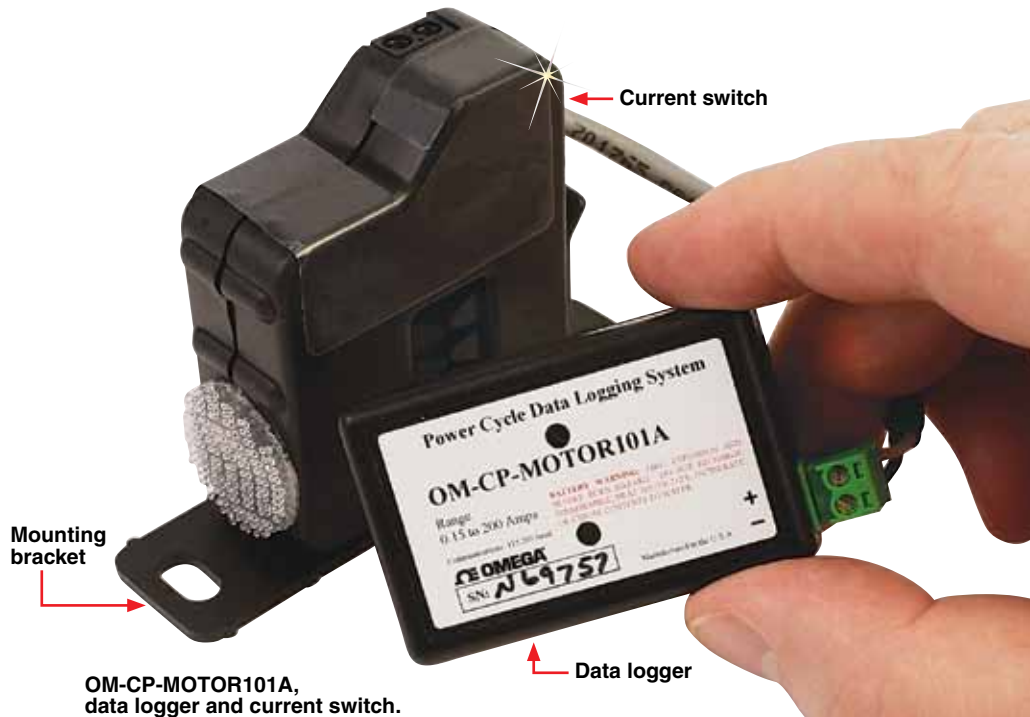


Machinery On/Off Data Logging System Part of the NOMAD® Family

OM-CP-MOTOR101A Series



- ✓ Measure and Record On/Off Status of Motors, Fans, Pumps and Other Equipment
- ✓ 150 mA Trip Point
- ✓ Compatible up to 200 A
- ✓ Real Time Operation
- ✓ Useful for Energy Audits and Time Studies
- ✓ Complete Kit Includes Data Logger and Current Switch with Mounting Bracket



OM-CP-MOTOR101A, data logger and current switch.

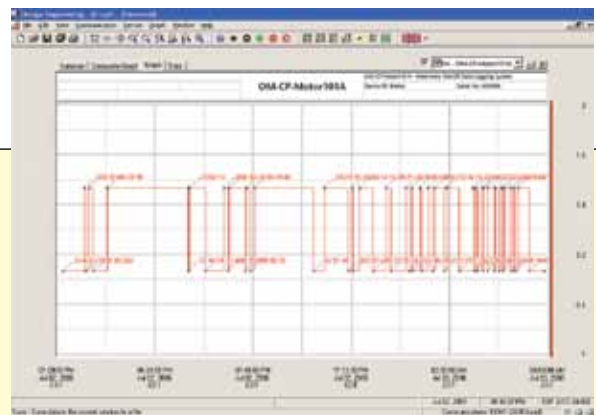
The OM-CP-MOTOR101A Series measures and records on and off status changes for motors or other equipment drawing up to 200 Amps. Simply route the current carrying wire for the equipment being monitored through the current switch. The state change occurs when the current switch exceeds the 150 mA set point. This allows for most basic equipment to be monitored. The current switch monitors whether there is current passing through a wire around which it is attached.

When the current exceeds 150 mA, the output changes and provides a voltage for the OM-CP-MOTOR101A to measure. The device can hold up to 406,323 state changes, but memory will only be used if the status has changed. The device can be programmed to check for status changes 4 times per second up to once every 24 hours.

Data retrieval is simple. Simply plug it into an available USB port and our user-friendly software does the rest. The software converts a PC into a real-time strip chart recorder. Data can be printed in graphical and tabular format or exported to a text or Microsoft Excel® file. The storage medium is non-volatile solid state memory, providing maximum data security even if the battery becomes discharged.



OM-CP-MOTOR101A, data logger and current switch, shown smaller than.



OM-CP-IFC200 Windows software displays data in graphical or tabular format, included with the OM-CP-MOTOR101A-KIT

Specifications

Amperage Range:

0.15 to 200 A

Trip Point:

0.15A (150 mA) fixed (200 mA AC for 50 Hz operation)

Status Output (Max):

N.O. 1.0 A @ 30 Vac/Vdc

Current Switch Housing:

Split core

Reading Rate:

4 Hz to 1 every 24 hr

Memory:

406,323 readings; software configurable memory wrap

Wrap Around:

Yes

Start Modes:

Immediate start, delay start up to 18 months, multiple pushbutton start/stop

Multiple Start/Stop Mode:

Start and stop the device multiple times without having to download data or communicate with a PC

Multiple Start/Stop Mode Activation:

To Start the Device:

Press and hold the pushbutton for 5 seconds, the green LED will flash during this time; the device has started logging

To Stop the Device:

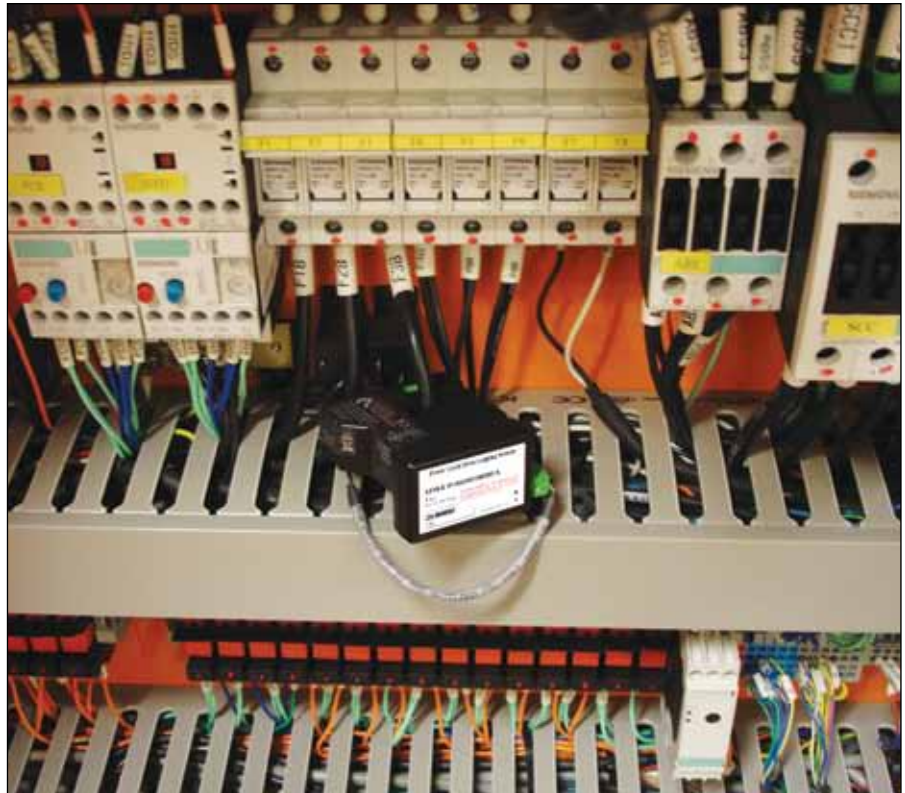
Press and hold the pushbutton for 5 seconds, the red LED will flash for three seconds and then the green LED will flash for two seconds; the device has stopped logging

Real Time Recording: The device may be used with PC to monitor and record data in real-time

LED Functionality:

Green LED Blinks: 10 second rate to indicate logging, 15 second rate to indicate delay start mode

Red LED Blinks: 10 second rate to indicate low battery and/or full memory



Password Protection:

An optional password may be programmed into the device to restrict access to configuration options; data may be read out without the password

Engineering Units: Native measurement units can be scaled to display measurement units of another type such as on/off, open/closed and more

Battery Type: 3.6V lithium battery included; user replaceable

Battery Life: 10 years typical, dependent upon frequency and duty cycle

Time Accuracy: ± 1 minute/month (at 20°C/68°F, stand alone data logging)

OM-CP-MOTOR101A shown monitoring current in an electrical panel.

Computer Interface: USB (interface cable required); 115,200 baud

Software: XP SP3/Vista/7 and 8 (32- and 64-bit)

Operating Environment: -15 to 40°C (5 to 104°F), 10 to 90% RH non-condensing

Dimensions (Data Logger): 36 x 56 x 16 mm (1.4 x 2.2 x 0.6")

Current Switch: 54 x 89 x 26 mm (2.1 x 3.5 x 1.0")

Weight: 113 g (4 oz)

With OM-CP-IFC200: 255 g (9 oz)

Materials: ABS plastic

To Order

Model No.	Description
OM-CP-MOTOR101A-KIT	Machinery on/off status data logging system, includes data logger, current switch and OM-CP-IFC200 Windows software and USB interface cable
OM-CP-MOTOR101A	Machinery on/off status data logging system, includes data logger, current switch; (OM-CP-IFC200 Windows software and USB interface cable sold separately)
OM-CP-IFC200	Windows software and 1.8 m (6') USB interface cable
OM-CP-BAT105	Replacement battery

Comes complete with 3.6 V lithium battery and operator's manual. OM-CP-MOTOR101A-KIT includes OM-CP-IFC200 Windows software and USB interface cable.

Ordering Example: OM-CP-MOTOR101A-KIT, data logging system, includes data logger, current switch and OM-CP-IFC200 Windows® software and USB interface cable.