

Counter, Event and State Data Logger with USB Interface

OM-EL-USB-5



- ✓ **Functions as:**
 - Event Data Logger
 - State Change Data Logger
 - Event Counter
- ✓ **Accepts Input Voltage Up to 24 Vdc or Volt Free (Dry) Contacts**
- ✓ **Rising and Falling Edge Triggering**
- ✓ **LED Flash on Event/State Change**
- ✓ **Screw Terminal Connections**
- ✓ **USB Interface for Setup and Download**
- ✓ **Includes Replaceable High Capacity Lithium Battery, Windows Control Software and Measurement Leads**

The OM-EL-USB-5 standalone data logger can record events (detecting an input and storing the time and date of occurrence), record state changes (similar to an 'event' but also recording when the input reverts back to normal) and count events (count the number of events that happen in a time period, without any individual event time or date information). Up to 32,510 events or state changes can be recorded and up to 32,510 timed intervals in event counter mode (with 65,536 events in each interval).

Events and state changes can be triggered by either a rising edge (a voltage going from low to high) or falling edge (a voltage going from high to low). It is also possible to use volt free (dry) contacts. In this case instead of measuring an external voltage, the data logger applies a voltage across the screw terminals and detects when the input closes (e.g., a relay or microswitch).

Fast logging rates allow event capturing at speeds of up to two times per second and state changes at speeds of up to four times per second. Event counting can operate at speeds of up to 100 times per second (when the LEDs are turned off).

The data logger is supplied complete with Windows software, measurement leads terminated with crocodile clips and a long-life lithium battery which allows logging for up to 1 year. Functionality of the unit is indicated by flashing red and green LEDs. The red LED can be set up to flash every time an event occurs.

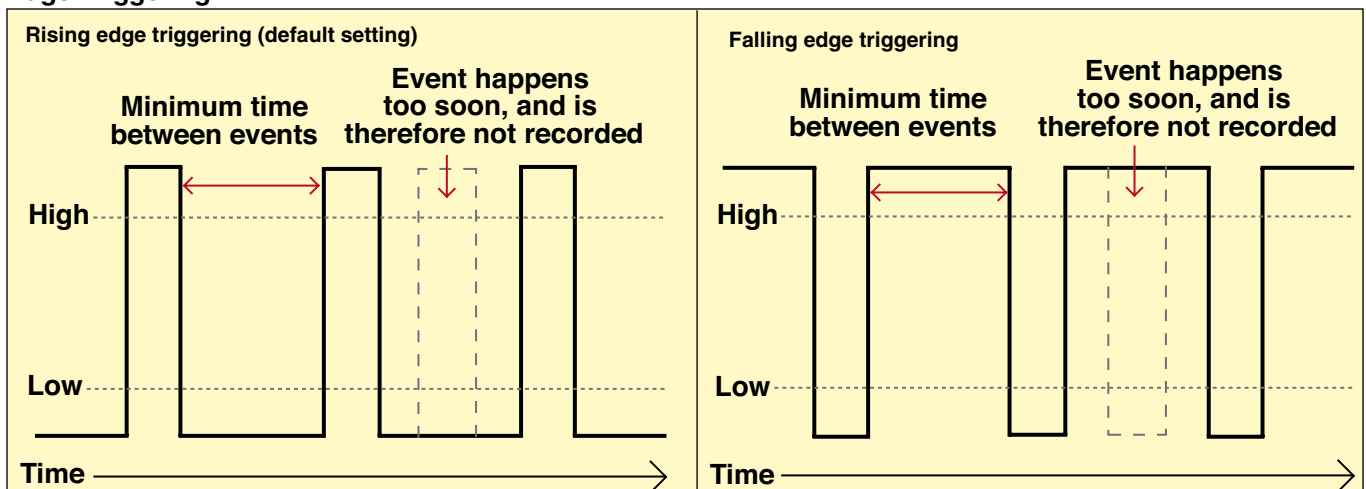
OM-EL-USB-5, shown actual size.



Protective cap included.

The user can easily set up the logger, and download the stored data by plugging the data logger into a PC's USB port and running the included Windows control software. Easy to install and use, the control software runs under Windows® 2000, XP, Vista and 7 and 8 (32-bit and 64-bit).

Edge Triggering



The software is used to set-up the data logger as well as download, graph and export data to Excel. The software allows the following parameters to be configured: logger name, recording mode (events, state changes or count events), triggering on rising or falling edges, voltage or volt free (dry) contact triggering, input voltage range, flash red LED on event/state change, time period for event counting (i.e. count the number of events every 10 s). The maximum number of events per time period is limited to 65,000.

Specifications

Time Between:

Events: 500 msec min

State Changes: 500 msec min

Event Counts: 10 msec min
(with LEDs disabled);

50 msec min (with LEDs enabled)

Input Voltage: Software selectable input voltage range (see input voltage table below)

Volt Free (Dry) Contacts:

Voltage: 2.75V min, 3.6V max
(voltage decreases as the battery is discharged)

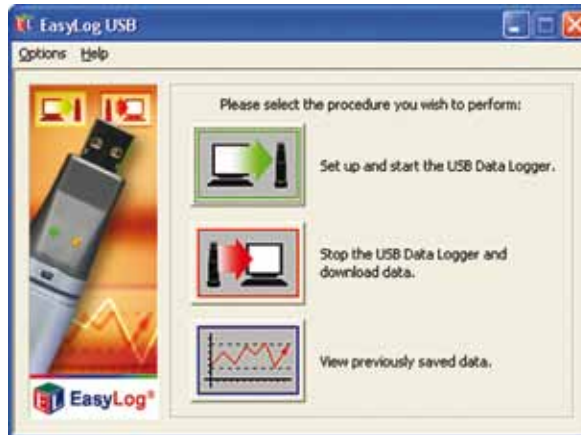
Current: 35 uA typical

Timing Accuracy: ±3 sec per 24 hours at 20°C

Memory: Up to 32,510 readings in event mode or state change mode, or up to 32,510 timed intervals in event counter mode

Operating Temperature Range: -35 to 80°C (-31 to 176°F)

Visual Indicators (Red and Green LEDs): The green LED will flash once every 10 sec to indicate normal logging, once every 20 sec to indicate low battery or twice every 20 sec to indicate data logger memory full; the red LED can be set up to flash once each time an event, state change or count is recorded



Windows® control software included free with the OM-EL-USB-5.

Software: Windows 2000/XP/VISTA/7 and 8 (32-bit and 64-bit)

Power: ½ "AA" 3.6V lithium battery (included)

Battery Life: 1 year (assuming 1 event every 5 mins at 20°C in voltage input mode)

Weight: 40 g (1.4 oz)

Dimensions: 98 L x 26.8 mm W (3.86 x 1.05")

Input Voltage

Input Range (Vdc)	Low Trigger Voltage (Vdc)	High Trigger Voltage (Vdc)
0 to 3	0.8	2.0
0 to 5	1.3	3.4
0 to 12	3.2	8.0
0 to 24	6.4	16.0

OM-EL-USB-5, shown larger than actual size.



To Order

Model No.	Description
OM-EL-USB-5	Counter, event and state data logger with USB interface
OM-EL-BATT	Replacement 3.6V lithium battery

Comes complete with measurement leads terminated with crocodile clips, ½ "AA" 3.6V lithium battery, Windows® control software and operator's manual on CD.

Ordering Example: OM-EL-USB-5, counter, event and state data logger with USB interface