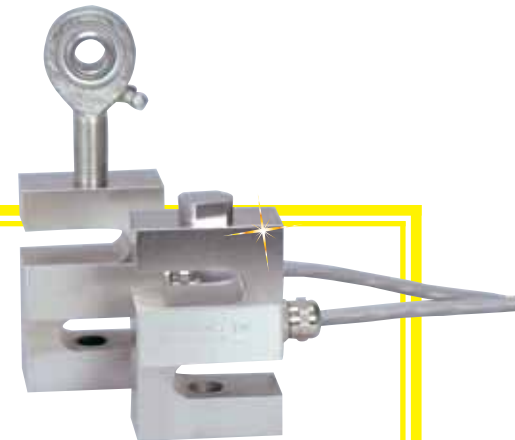


OPTIONS AND ACCESSORIES

LOAD BUTTONS AND ROD ENDS

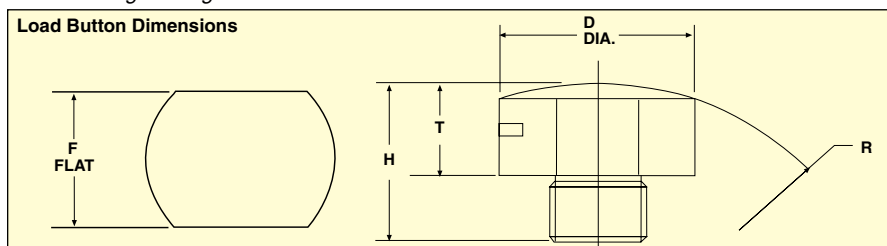
FOR STANDARD LOAD CELLS



Load Buttons

Dimensions: mm (in)						
MODEL	THREAD	H	T	D	F	R
LBC-014	¼-28	13 (0.50)	5 (0.20)	15 (0.60)	13 (0.50)	51 (2.0)
LBC-038	¾-24	15 (0.60)	8 (0.30)	19 (0.75)	16 (0.63)	51 (2.0)
LBC-012	½-20	18 (0.70)	8 (0.30)	19 (0.75)	16 (0.63)	102 (4.0)
LBC-034	¾-16	23 (0.90)	8 (0.30)	38 (1.50)	32 (1.25)	152 (6.0)
LBC-100	1-14	28 (1.10)	8 (0.30)	38 (1.50)	32 (1.25)	203 (8.0)
LBC-101	1-12	28 (1.10)	8 (0.30)	38 (1.50)	32 (1.25)	203 (8.0)
LBC-114	1¼-12	38 (1.50)	13 (0.50)	51 (2.00)	44 (1.75)	254 (10.0)
LBC-112	1½-12	57 (2.25)	25 (1.00)	64 (2.50)	57 (2.25)	356 (14.0)
LBC-200-12	2-12	89 (3.50)	28 (1.10)	57 (2.25)	44 (1.75)	203 (8.0)
LBC-300-8	3-8	133 (5.25)	47 (1.86)	83 (3.25)	67 (2.63)	305 (12.0)

* Consult Engineering.



Load Cell Options (Limited Models Only)

Temperature Compensation:

“TC1” Extended Compensated Range (-46 to 93°C/-50 to 200°F) not exceeding operating range

“TC2” 163°C (350°F)

Additional Cable Length:

- 4-conductor PVC
- 4-conductor PTFE
- 6-conductor PVC
- 6-conductor PTFE

Mating Connectors:

- PT06F10-6S
- PT06A10-6S (SR)

Calibration/Recalibration:

- “NC5” 5-point calibration 0%, 50%, 100%, 50%, 0% Extra calibration points

Built-In Amplifiers:

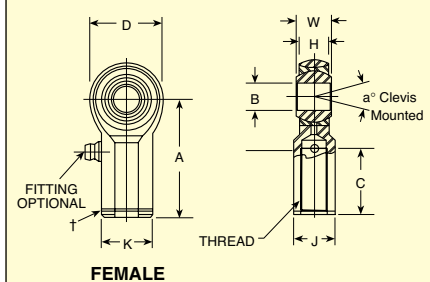
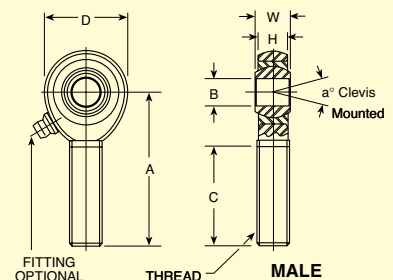
- 0 to 5 Vdc
- 4 to 20 mA

In-Line Amplifiers:

Consult Engineering

Consult sales for price and availability.

Rod End Dimensions



Rod Ends

Dimensions: mm (in)												
MALE ROD ENDS	THREAD UNF-3A	B	W	H	A	D	C	a°	K	J	STATIC LOAD (lb)	WT. (lb)
REC-010M*	10-32	5 (0.190)	8 (0.312)	6 (0.234)	32 (1.25)	16 (0.625)	19 (0.750)	17	—	—	1170	0.03
REC-014M	¼-28	5 (0.190)	8 (0.312)	6 (0.250)	40 (1.562)	19 (0.750)	25 (1.000)	10	—	—	2158	0.04
REC-038M	¾-24	8 (0.3125)	11 (0.437)	9 (0.344)	49 (1.938)	25 (1.000)	32 (1.250)	12	—	—	5323	0.25
REC-012M	½-20	11 (0.4375)	14 (0.562)	11 (0.437)	62 (2.438)	33 (1.312)	38 (1.500)	12	—	—	23,452	0.25
REC-058M	⅝-18	13 (0.5000)	16 (0.625)	13 (0.500)	67 (2.625)	38 (1.500)	41 (1.625)	10	—	—	31,390	0.38
REC-034M	¾-16	16 (0.6250)	19 (0.750)	14 (0.562)	73 (2.875)	44 (1.750)	44 (1.750)	13	—	—	40,572	0.60
REC-100M	1-14	25 (1.000)	35 (1.375)	25 (1.000)	105 (4.125)	70 (2.750)	545 (2.120)	14	—	—	43,541	2.1
REC-114M	1¼-12	32 (1.250)	28 (1.093)	24 (0.937)	105 (4.125)	70 (2.750)	54 (2.125)	7	—	—	44,500	2.4
REC-112M	1½-12	38 (1.500)	33 (1.312)	29 (1.125)	137 (5.375)	89 (3.500)	76 (3.000)	6.5	—	—	138,826	4.8
FEMALE ROD ENDS	UNF-2B	B	W	H	A	D	C	a°	K	J	STATIC LOAD (lb)	WT. (lb)
REC-006F*	6-32†	3 (0.1250)	6 (0.250)	5 (0.187)	21 (0.812)	13 (0.500)	11 (0.437)	16	8 (0.312)	6 (0.250)	1202	0.02
REC-010F*	10-32	5 (0.190)	8 (0.312)	6 (0.234)	27 (1.062)	16 (0.625)	13 (0.500)	17	10 (0.406)	8 (0.312)	2028	0.04
REC-012F	½-20	13 (0.500)	16 (0.625)	13 (0.500)	54 (2.125)	33 (1.312)	30 (1.187)	12	22 (0.875)	19 (0.750)	16,238	—
REC-014F	¼-28	6 (0.250)	10 (0.375)	7 (0.265)	33 (1.312)	19 (0.750)	17 (0.687)	21	12 (0.469)	10 (0.375)	3114	0.05
REC-034F	¾-16	19 (0.750)	22 (0.875)	17 (0.687)	73 (2.875)	44 (1.750)	44 (1.750)	14	29 (1.125)	25 (1.000)	28,081	—
REC-038F	¾-24	10 (0.375)	13 (0.500)	10 (0.406)	41 (1.625)	25 (1.000)	24 (0.937)	12	17 (0.687)	14 (0.562)	9544	—

* Not available with grease fitting.

† UNC thread.