

EASIEST TO PROGRAM, CONNECT AND OPERATE **EZ Series**™ PLC TOUCHPANELS



EZ Series PLC Touchpanels

TESTED AND PROVEN BY 20,000+ ENGINEERS

- Easy to Learn, Intuitive Software
- Easy to Operate 3D Objects
- Easy to Connect to Most PLCs
- Easy to Maintain Hardware
- Easy on the Budget
- 8 Display Sizes to Choose From
- Exclusive Online Programming, No Downtime
- NEMA 4x Indoor, FDA Compliant

EZ Series Touchpanels are Easy to Operate



- Efficient 3D Graphical Objects
- 4000 Symbols to Choose From
- Multiple Languages
- Easy to Understand Trend Graphs
- Easy Insightful PID Faceplates
- Multi-State Indicators
- Alarm Reporting
- Recipe Button w/ On-Screen Edit
- Scale Objects w/o Distortion
- Pop Up Thumbwheel Entry
- Pop Up Alpha-Numeric Keypad
- 8 Levels of Password Security
- Dynamic/Multi-state Bitmaps
- Bitmap Buttons

EZ Series Touchpanels have Drivers for Over 90% of PLCs/Networks

Serial Drivers

- Allen-Bradley DF1 Half and Full Duplex (PLC-5, SLC 500, MicroLogix 1000, 1200 and 1500)
DH485/AIC/AIC+ for MicroLogix 1000, 1200, 1500, SLC500, 5/01, /02, /03
- Aromat Mewtocol COM
- Control Techniques - Unidrive 2-wire, 4-wire (binary)
- CTC Binary
- GE Fanuc SNPX (90/30, 90/70)
- Idec Computer Link
- Omron Host Link (C200 and C500)
- All Mitsubishi FX Series
- Modicon MODBUS® RTU
- Siemens S7 MPI Adapter series
- Square D Symax
- Texas Instruments - TI5x5 Series

Ethernet Drivers

- Allen-Bradley Ethernet I/P for ControlLogix
- Allen-Bradley DF1 over Ethernet for MicroLogix & SLC 500 PLC's
- GE SRTP over Ethernet
- Modbus TCP/IP Ethernet

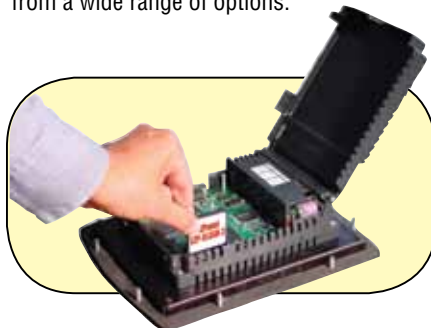
Hardware Drivers

- DH+ / Remote I/O
- Modbus Plus
- Profibus
- DeviceNet

EZ Series Touchpanels have Enhanced Data Acquisition & Ethernet Connectivity Options

EZDac (EZ's Data Acquisition Utility Option) uses the RS232 programming port to a PC or Ethernet for communicating with multiple panels allowing data acquisition in a PC remote from the panel. The user specifies tags and schedules for data acquisition. Data files are organized in a convenient, user selectable format (tab delimited or CSV) and can be opened in Excel or in any text editor.

EZDac Software installed on your PC can select any tag you want to monitor on the PLC/Panel, watch the data coming in real time (as compared to receiving only a snap-shot when certain event occurs) and plot it into an Excel sheet automatically. Time intervals on event triggers can be selected from a wide range of options.



PROGRAM THIS SCREEN IN LESS THAN 10 MINUTES

EZ Series Touchpanels have Earned their Name!

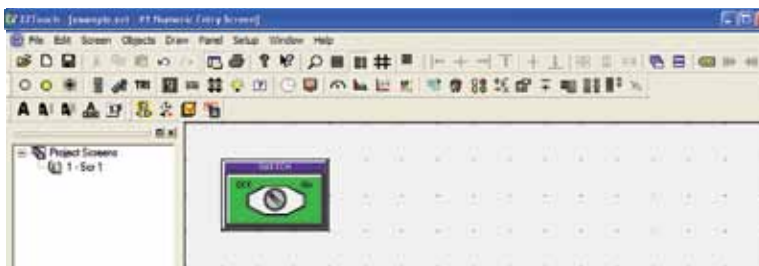
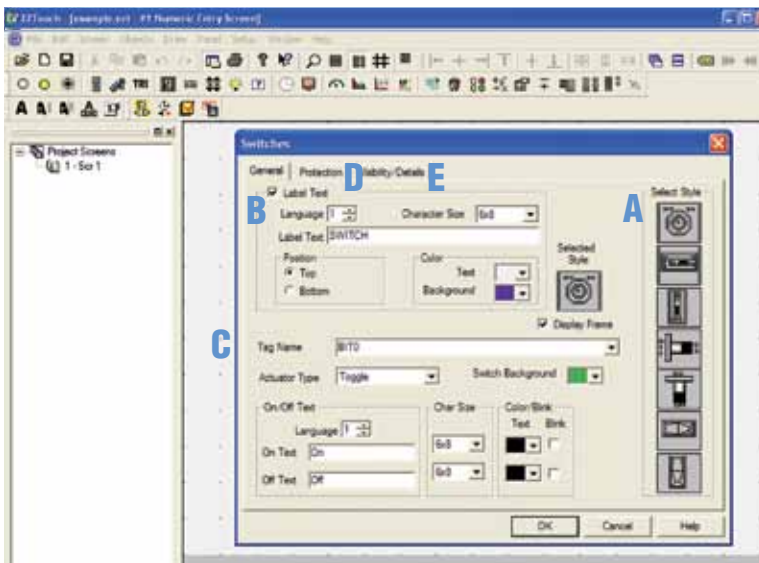
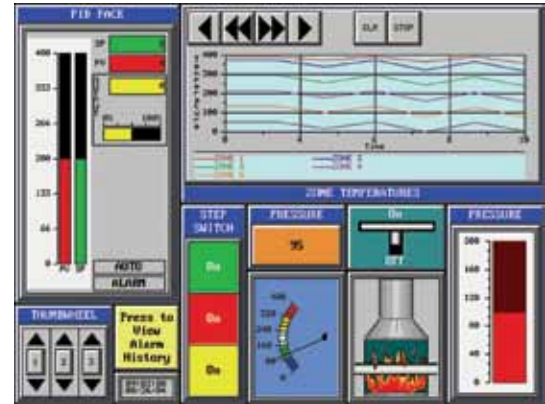
We named them “EZ Series” for a reason! We made an easy to use, simple operator interface that will save you a lot of engineering hours and design time due to its simplicity and ease of use. You don’t need prior programming knowledge to design a screen. You do not need to attend any classes to learn how to program them.

It is Intuitive, it is Simple!

ONLY ASSUMPTIONS:

- Familiar with Windows®-Based Environments
- Good Understanding of Your PLC Memory’s Address Formats

Programming Software



STEP 1 - Select an Object

- Click on “Objects” on the Main Menu Bar
- Select the Object you Wish to Create
- In This Example, We’ll Click on “Switches”
- You May Also Select an Object from the Tool Bar Below the Main Menu

STEP 2 - Fill in the Dialog Box

- A Click The Style of Switch You Wish to Use.
- B Select “Label Text” This Will Allow You to Name and Customize the Object.
- C Select or Create a PLC Bit Address Tag That the “Switch” Will Activate.
- D If You Need Password Protection, Click on the “Protection” Tab at the Top of the Dialog Box.
- E If You Wish to Keep This Object Invisible Until a PLC Tag is Triggered, Click on the “Visibility/Details” Tab.

STEP 3 - Place the Object

- Click On The Screen And Stretch The Object To Your Desired Size.
- If You Want To Edit The Object Again, Simply Double Click To Bring Up The Dialog Box.
- You Can Even “Simulate” The Object To See How It Interacts In Real Time.

UNIQUE ONLINE PROGRAMMING: SAVES TIME FOR SCREEN DESIGN AND MACHINE DEBUG

OTHERS:

- Create a Screen - 20 Minutes
- Compile and Download to Panel (Minimum 5 Minutes)
- Check it Out on the Panel
- Change Colors, Fonts, Object Sizes...
an Average of 4x, 5 Minutes Each

TIME TO DEVELOP AND FINALIZE ONE SCREEN - 60 MINUTES

OURS:

- Create a Couple of Objects
- Click Save (Transfers Instantaneously) to See How They Look
- Add More Objects, Click Save Again

**NO Compilation or Download...
NO Machine Down Time...
JUST CLICK and Save to Panel**

**TIME TO DEVELOP AND FINALIZE ONE
SCREEN - 10 MINUTES**

**COMPILE... DOWNLOAD... COMPILE... DOWNLOAD
COMPILE... DOWNLOAD... COMPILE... DOWNLOAD**



60 MINUTES

NO COMPILATION OR DOWNLOAD



10 MINUTES

DEDICATED NON-WINDOWS OPERATING SYSTEM FOR SUPER-FAST RESPONSE AND SCREEN UPDATE TIME



**Switch between
screens in less
than a second!**



**TYPICAL 0.75
SECONDS**



and not 2-3 seconds like others

Fastest Response to Touch Input

Because of the use of vector based graphics and a proprietary OS, EZ Series Touchpanels are universally recognized as having the fastest response to touch inputs, typically less than 3/4 of a second even with complex screens. This means no waiting and also less wear on a panel from operators pounding an object on a screen waiting for a response.



SPECIFICATIONS

Enclosure: NEMA 4/4X Indoor, FDA Compliant
CPU Type: Motorola Coldfire 32 bit 40 MHz
OS: Dedicated (non-Windows)
Service Power: 24 Vdc (20 to 30 Vdc) 10 to 20 W depending on model
Agency Approval: UL, CUL, CE
Op. Temp.:

STN: 0 to 45°C

TFT: 0 to 55°C

Storage Temp.: -20 to 65°C

Humidity: 10 to 95% RH,

non-condensing

Withstand Voltage: 1000 Vdc 1 min

Vibration: 5 to 55 Hz, 2G for 2 hours

Shock: 10G up to 20 milliseconds

Electrical Noise: NEMA ICS 2-230

Showering Arc

No. of Screens: Up to 999

Limited by Memory only

Real Time Clock: Built-in

Screen Saver: Built-in

Mounting: DIN

MODEL SPECIFIC SPECIFICATIONS

Screen Pixels:

4": 320 x 240

6": 320 x 240

8, 10 & 15": 640x480

Display Type & Touch Cells:

4" Mono: 3.8", 16 Shades of Gray, 140 Nits, 50K Hrs, 48 tch cells

4" TFT Color: 3.5", 128 Colors, 400 Nits, 75K Hrs, 48 touch cells

6" W.O.B.: 5.7", 4 Shades of Blue 140 Nits, 40K Hrs, 48 tch cells

6" Mono: 5.7", 16 Shades of Gray, 140 Nits, 40K Hrs, 192 cells

6" STN Color: 5.7", 128 Colors, 200 Nits, 40K Hrs, 192 touch cells

6" TFT Color: 5.7", 128 Colors, 470 Nits, 75K Hrs, 192 touch cells

8" STN Color: 8.2", 128 Colors, 140 Nits, 40K Hrs, 192 touch cells

8" TFT Color: 8.2", 128 Colors, 370 Nits, 50K Hrs, 192 touch cells

10" TFT Color: 10.4", 128 Colors, 400 Nits, 50K Hrs, 192 tch cells

15" TFT Color: 15", 128 Colors, 250 Nits, 55K Hrs, 192 tch cells

PRODUCT DIMENSIONS (EXTERNAL):

4": 4.1 x 5.1 x 1.7"

6": 6.2 x 8.1 x 2.5"

8": 8.8 x 10.9 x 2.3"

10": 10.6 x 13.6 x 2.9"

15": 13 x 16.8 x 4.7"

To Order	
MODEL	DESCRIPTION
EZP-S4M-FS	3.8" Monochrome EZ Series Touchpanel
EZP-T4C-FS	3.8" TFT Color EZ Series Touchpanel
EZP-T4C-FSE	3.8" TFT Color EZ Series Touchpanel with Ethernet
EZP-S6W-RS	5.7" White on Blue EZ Series Touchpanel
EZP-S6M-FS	5.7" Monochrome EZ Series Touchpanel
EZP-S6C-FS	5.7" STN Color EZ Series Touchpanel
EZP-T6C-FS	5.7" TFT Color EZ Series Touchpanel
EZP-S8C-FS	8.4" STN Color EZ Series Touchpanel
EZP-T8C-F	7.7" TFT Color EZ Series Touchpanel
EZP-T10C-F	10.4" TFT Color EZ Series Touchpanel
EZP-T15C-FS	15" TFT Color EZ Series Touchpanel
SOFTWARE	
EZP-PANELEDIT	Programming Software
EZ-DAQ-SOFT	Data Acquisition Software for EZ Series Panels
MEMORY AND ACCESSORIES	
EZP-RAM-2	1 MB Expansion RAM card for EZ Series panels
EZP-FLASH-1	512K Flash memory card for EZ Series panels
EZP-FLASH-2	1 MB Flash memory card for EZ Series panels
EZP-FLASH-3	2 MB Flash memory card for EZ Series panels
EZP-ETHERPLUS	Modbus TCP/IP Ethernet Interface Card
EZP-BAT	Replacement 3.6V Battery for EZ Series panels
EZP-BRK-1	Optional DIN rail clips for 5.7" models (set of 2)
DISPLAY SHEILDS	
EZP-COV6	Pack of 3 protective shields for 6 EZ
EZP-COV8	Pack of 3 protective shields for 8 EZ
EZP-COV10	Pack of 3 protective shields for 10 EZ
EZP-COV15	Pack of 3 protective shields for 15 EZ
CABLES	
EZP-CBL	10' RS232C shielded cable for EZPLC
EZP-2CBL	10' RS232C shielded cable for DL series PLC
EZP-MLOGIX-CBL	6' shielded cable for AB Micrologix PLC
EZP-SLC-232-CBL	10' shielded cable for AB SLC series PLC
EZP-DH485-CBL	10' shielded cable for AB DH485 network
EZP-90-30-CBL	10' shielded cable for GE 9030 or 9070 SNPX
EZP-MITSU-CBL	10' RS422 shielded cable for FX, 15D to 25D
EZP-MITSU-CBL-1	10' RS422 shielded cable for FX, 15D to 8 Din
EZP-S7MPI-CBL	10' shielded cable for Siemens S7
EZP-OMRON-CBL	10' shielded cable for Omron C200 or C500
EZP-ARCOL-CBL	10' shielded cable for Aromat PLC
EZP-CTRUNI-CBL	10' RS422 shielded cable, 4 wire Unidrive
EZP-CTRUNI-CBL-1	10' RS485 shielded cable, 2 wire Unidrive
EZP-CTCBI-CBL	10' RS232C shielded cable for CTC PLC
EZP-IDECM-CBL	10' RS485 shielded cable for IDEC Micro 3 PLC
EZP-MODUNI-CBL	10' RS485 shielded cable for Modicon Unitelway
EZP-MODRTU-CBL	10' RS232C cable Modbus RTU, 15D to 9D
EZP-S7200-CBL	10' RS485 shielded cable for Siemens S7-200
EZP-IDECS-CBL	10' RS232C shielded cable for IDEC Microsmart
EZP-MODRJ-CBL	10' RS232C shielded cable for Modicon Micro
EZP-PGMCBL	RS232 Programming cable

Ordering Examples: EZP-S6W-RS, 5.7" white on blue EZ series touchpanel, EZP-PANELEDIT, programming software, EZP-CBL, programming cable. EZP-S6C-FS, 5.7" STN color EZ series touchpanel, EZP-PANELEDIT, programming software, EZP-CBL, programming cable.