

SIGNALING ALARMS

DUAL TONE, INDOOR/OUTDOOR PANEL ALARMS

NEW

M22 Series



M22-30V-12VB



M22-45M-12VB



M22-65M-12VB



M22-45M-12VB showing detail of terminal block, shown smaller than actual size.

- Mounts in Standard 22 mm (0.87") Pushbutton Hole
- UL Type 4, 4X, 13, IP65
- Sound Output Range 65 to 105 dBa @ 1 meter
- Selectable Continuous/Pulsing and Wobble on 65 mm (2.6") Model
- Adjustable Sound Pressure Levels on 45 (1.8") and 65 mm (2.6") Models
- 12 Vac/dc, 120 Vac or 240 Vac
- Plug-In Terminal Block—IP2X Rated
- M22-30K Models for Use in Food Industry

The M22 Series panel mount signaling alarms are made of heavy-duty industrial polycarbonate and are intended for indoor or outdoor use. They are UL Type 4/4X/13 and IP65 approved for harsh environments and are watertight. The M22-30K models are specifically designed for the food industries and have fully enclosed housings to prevent contaminants from accumulating.

The M22 series alarm sounders are equipped with a plug-in three point finger-safe terminal block for ease of wiring and configuring the tone type. All M22 models can be configured for either continuous or pulsing tones. The M22-65G models can also be wired for a wobble tone (alternating frequency). Users may also adjust the intensity of the sound levels on the 45 and 65 mm (1.8 and 2.6") alarm models.

SPECIFICATIONS

Materials: UV stabilized polycarbonate

Operating Temperature: -25 to 60°C (-13 to 140°F)

Mounting Nut Torque: 1.7 Nm (15 in/lbs)

Terminals: 14 AWG (2.5 mm²), IP2X

ELECTRICAL		65 mm	45 mm	30 mm
Supply Voltage	12 Vac/dc 50/60Hz	8 to 26 Vac/dc	8 to 26 Vac/dc	10 to 26 Vac/dc
	120 Vac 50/60Hz	50 to 140 Vac	50 to 140 Vac	80 to 140 Vac
	240 Vac 50/60Hz	150 to 260 Vac	150 to 260 Vac	180 to 260 Vac
Nominal Current	24 Vac/dc	57 mA	20 mA	20 mA
	120 Vac	40 mA	40 mA	20 mA
	240 Vac	42 mA	42 mA	20 mA
Turn-On Leakage		≥ 3 mA	≥ 3 mA	≥ 3 mA
Sound Main Frequency		3300 Hz	3300 Hz	3500 Hz
Sound Types	Continuous/Pulsing	Yes	Yes	Yes
	Alternating (Wobble)	Yes	No	No
Sound Level Adjustment		Yes	Yes	No
Weight		65 g (2.3 oz)	35 g (1.2 oz)	25 g (0.9 oz)

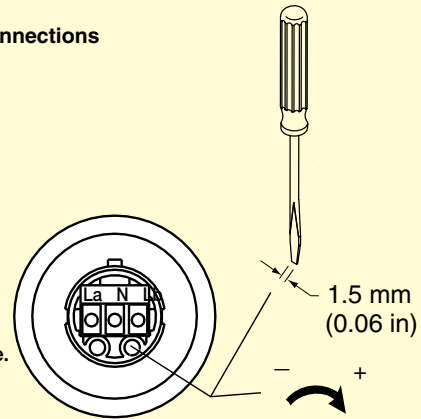


M22 signaling alarms terminal connections

Configuring Tone Type via Supply Voltage Connector

La	N	Lb		
X	X		---	PULSING
	X	X	⏏	WOBBLE (65 mm ONLY)
X	X	X	—	STEADY

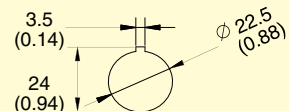
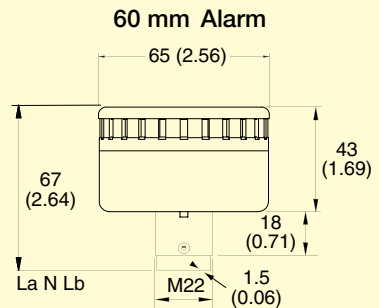
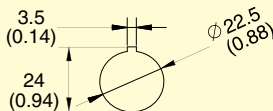
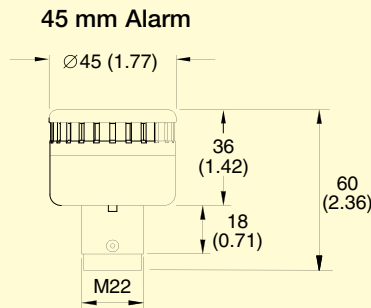
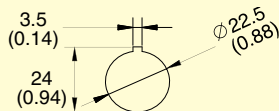
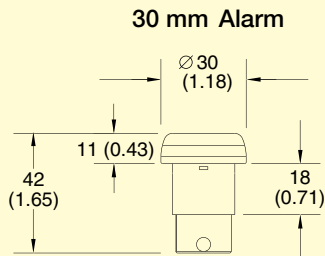
Connect AC-Neutral to N, and AC-Line to La and/or Lb as appropriate.



Sound Adjustment (45mm / 65mm only)

Dimensions: mm (inch)

Ø = diameter



To Order Visit omega.com/m22 for Pricing and Details

MODEL NO.	O.D. mm (inch)	tone TYPES	SOUND LEVEL @ 1 m (MINIMUM/MAXIMUM)	VOLTAGE
M22-30K-12VB	30 (1.18)	Pulse/continuous	65 to 70 dBa	12 to 24 Vac/dc
M22-30K-120VB	30 (1.18)	Pulse/continuous	65 to 70 dBa	120 Vac
M22-30K-240VB	30 (1.18)	Pulse/continuous	65 to 70 dBa	240 Vac
M22-30V-12VB	30 (1.18)	Pulse/continuous	80 to 85 dBa	12 to 24 Vac/dc
M22-30V-120VB	30 (1.18)	Pulse/continuous	80 to 85 dBa	120 Vac
M22-30V-240VB	30 (1.18)	Pulse/continuous	80 to 85 dBa	240 Vac
M22-45M-12VB	45 (1.77)	Pulse/continuous	<85 to 100 dBa	12 to 24 Vac/dc
M22-45M-120VB	45 (1.77)	Pulse/continuous	<85 to 100 dBa	120 Vac
M22-45M-240VB	45 (1.77)	Pulse/continuous	<85 to 100 dBa	240 Vac
M22-65G-12VB	65 (2.56)	Pulse/continuous/wobble	<85 to 105 dBa	12 to 24 Vac/dc
M22-65G-120VB	65 (2.56)	Pulse/continuous/wobble	<85 to 105 dBa	120 Vac
M22-65G-240VB	65 (2.56)	Pulse/continuous/wobble	<85 to 105 dBa	240 Vac

Accessories

MODEL NO.	DESCRIPTION
OMPBD7-AHA1	Hole adaptor for 30 mm (1.18") holes
OMPBD7-AW2	Mounting ring wrench

Comes complete with operator's manual.

Ordering Examples: M22-30K-12VB, 30 mm (1.18") signaling alarm for washdown locations, 12 to 24 Vac/dc.

M22-65G-120VB, 65 mm (2.6") signaling alarm with pulse, continuous or wobble sound options, 120 Vac.