

22 mm PILOT DEVICES

OMPBD7 SERIES

PUSHBUTTONS AND SELECTOR SWITCHES

- Heavy-Duty/Oil Tight Pushbuttons
- Quick Installation with Tool-Less Mounting Latch
- Plastic Operators: NEMA 4/4X/13 and IP65/66 Rated
- Metal Operators: NEMA 4/13 and IP65/66 Rated
- Touch-Safe Contact Blocks—with IP20 Recessed Screw Terminals
- Heavy-Duty Current Rating (10A Continuous)



Omegas rugged OMPBD7 pilot devices offer maximum flexibility and a wide choice for all applications. This 22 mm line is aesthetically appealing and modularly designed to make assembly and interchangeability easy. The OMPBD7 operators are available in two different body styles to meet every application need. Both operators exhibit a new lower profile stylish appearance while maintaining the rugged performance necessary for demanding environments.

Two Operator Types

OMPBD7P is a plastic operator with a captive black plastic front bezel. Constructed of high-grade thermoplastics, the OMPBD7P is the corrosion resistant solution for harsh environments. For super tough applications, the OMPBD7M has a die-cast zinc housing and mounting ring for a rugged durability. Both are finished with corrosion resistant chrome plating. The OMPBD7M also features a captive shiny metal bezel for a polished appearance.

Quick, Easy Installation

A standard anti-rotation tab keeps front elements from turning or falling off the control panel, making it possible for one person to install all OMPBD7 components even if the front and rear panel are not accessible at the same time. A central mounting ring allows for quick installation and removal of all OMPBD7 operators. All back-of-panel components including contact blocks



All models shown larger than actual size.

OMPBD7P-E4PX10, \$24, plastic pushbutton, extended button, red, momentary operation with 1 NO contact.



OMPBD7M-F3PX10, \$24, metal pushbutton, flush button, green, momentary operation with 1 NO contact.



OMPBD7P-MT34PX01, \$45, plastic pushbutton, 30 mm mushroom, red, maintained operation with 1 NC contact.

Each pushbutton includes one contact block. Units shown with two additional blocks (pushbuttons may be used with up to 6 contacts) see page I-26.

and power module elements snap-on and are readily accessible and interchangeable without removing the pilot device from the panel.

Tool-Less Mounting Latch

The OMPBD7 “tool-less” mounting latch mates the front element with the contact blocks and other back-of-panel components. The mounting latch is available in a plastic and metal design. The latches are easily installed with a “click” and removed by pushing a rotating collar to the right. Quick, reliable and strong, it’s the best pilot device mounting latch available in the industry.

Long Electrical and Mechanical Life

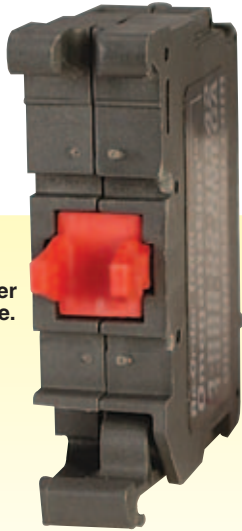
Most OMPBD7 operators have a mechanical of ten million operations... five million contact blocks. Electrical life ranges from 500,000 cycles at 3 A to ten million at 0.1 A. The OMPBD7 line is also electronics compatible with self cleaning contacts.

Environmental Ratings

Front elements, including pushbuttons, mushroom operators and selector switches, are IP66 rated against submersion, oil and dirt, making them reliable in the toughest industrial environments. Metal operators are NEMA 4/13 rated and plastic operators are rated NEMA 4/4X/13.

CONTACT BLOCKS

OMPBD7-X01, \$8.50.



Red = normally closed.

OMPBD7-X10, \$8.50.

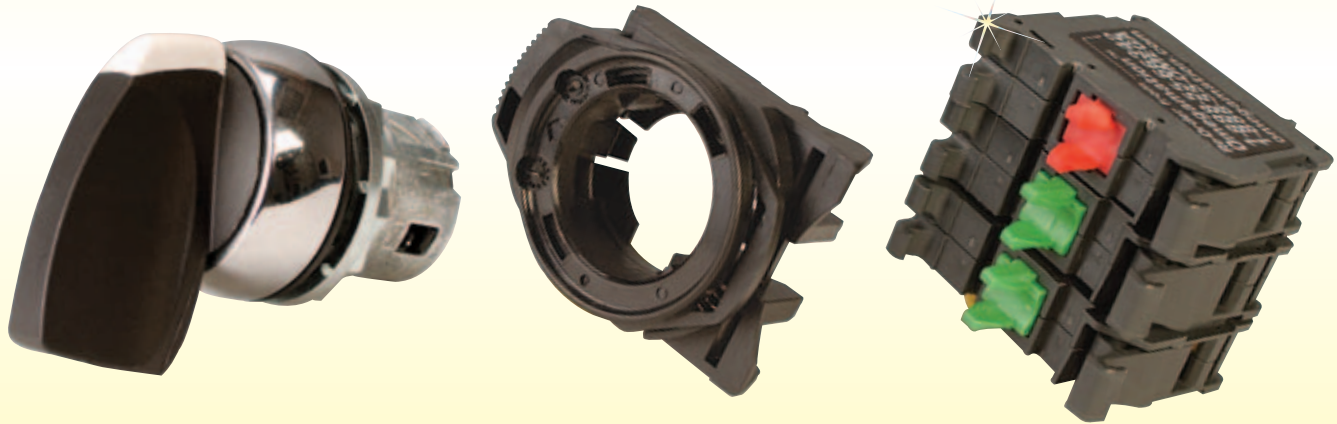


Green = normally open.



Rear view.

All shown larger than actual size.



OMPBD7M-HM22PX01, two way metal selector switch with long knob. Each unit includes tool-less mounting latch and one normally closed contact block. Shown with two additional (up to 6 total per operator possible) normally open contact blocks, model OMPBD7-X10, \$8.50 each.

Additional Features and Options

Heavy-Duty Ratings—The OMPBD7 line is UL 46E, NEMA A600 and Q600 listed. All components carry a 10 Amp continuous current rating, covering all industrial control needs.

All Major Approvals—OMPBD7 front elements are UL Recognized, while all OMPBD7 assemblies are UL Approved. The line is also approved by every major international agency making them ideal for export requirements.

H-Bridge & Gold Plated Contacts

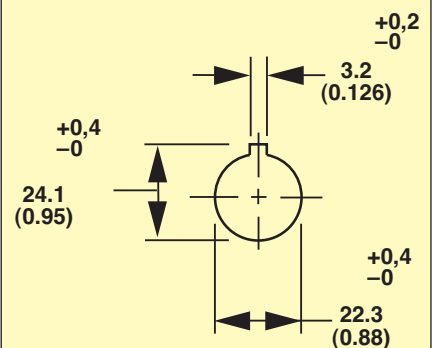
By doubling the available paths for current to pass through the contacts, the standard H-bridge design provides a cleaner current flow. Gold plated contacts quadruple the current paths for increased contact reliability in low voltage applications.

Touch-Safe—Back of panel components are finger safe, with IP20 protection.

Long Lasting Integral LED Assemblies

Our new LED lamps last up to 11 years! They are conveniently offered as a complete unit for all illuminated operators which include the one piece Integral LED Module. They come in five different colors: amber, blue, green, red and white.

Panel Hole Dimensions: mm (in)



22 mm PUSHBUTTONS

NON-ILLUMINATED PUSHBUTTONS AND E-STOPS

OMPBD7-NL Series
Start at
\$22

OMPBD7M-F3PX10, \$24, metal pushbutton, flush button, green, momentary operation with one NO contact.



Each pushbutton includes one contact block. Units shown with two additional blocks (pushbuttons may be used with up to 6 contacts), see page I-26.

All models shown larger than actual size.



OMPBD7P-E4PX10, \$24, plastic pushbutton, extended button, red, momentary operation with one NO contact.



OMPBD7M-MM43PX01, \$36, metal pushbutton, 40 mm mushroom, green, momentary operation with one NC contact.



OMPBD7P-MT64PX10, \$45, plastic pushbutton, 60 mm mushroom, red, maintained operation with one NO contact.

To Order *(Specify Model Number)*

MOST POPULAR MODELS HIGHLIGHTED!

NON-ILLUMINATED PUSHBUTTONS—COMPLETE WITH LATCH AND ONE CONTACT BLOCK						
METAL OPERATOR MODEL NO.	PRICE	PLASTIC OPERATOR MODEL NO.	PRICE	BUTTON STYLE	OPERATION	CONTACT
OMPBD7M-E(*)PX01	\$26	OMPBD7P-E(*)PX01	\$24	Extended	Momentary	1 NC
OMPBD7M-E(*)PX10	26	OMPBD7P-E(*)PX10	24	Extended	Momentary	1 NO
OMPBD7M-F(*)PX01	24	OMPBD7P-F(*)PX01	22	Flush	Momentary	1 NC
OMPBD7M-F(*)PX10	24	OMPBD7P-F(*)PX10	22	Flush	Momentary	1 NO
OMPBD7M-FA(*)PX01	28	OMPBD7P-FA(*)PX01	26	Flush	Maintained	1 NC
OMPBD7M-FA(*)PX10E	28	OMPBD7P-FA(*)PX10E	26	Flush	Maintained	1 NOEM
OMPBD7M-MM4(*)PX01	36	OMPBD7P-MM4(*)PX01	31	40 mm mushroom	Momentary	1 NC
OMPBD7M-MM4(*)PX10	36	OMPBD7P-MM4(*)PX10	31	40 mm mushroom	Momentary	1 NO
OMPBD7M-MM6(*)PX01	39	OMPBD7P-MM6(*)PX01	34	60 mm mushroom	Momentary	1 NC
OMPBD7M-MM6(*)PX10	39	OMPBD7P-MM6(*)PX10	34	60 mm mushroom	Momentary	1 NO
OMPBD7M-MP4(*)PX01	51	OMPBD7P-MP4(*)PX01	47	40 mm push-pull	Maintained	1 NC
OMPBD7M-MP4(*)PX10	51	OMPBD7P-MP4(*)PX10	47	40 mm push-pull	Maintained	1 NO

* Insert number for color selection, 2 = black, 3 = green, 4 = red, 5 = yellow, 6 = blue, 9 = no caps for inscription caps on flush models only.

To Order *(Specify Model Number)*

MOST POPULAR MODELS HIGHLIGHTED!

TWIST-TO-RELEASE E-STOP PUSHBUTTONS—COMPLETE WITH LATCH AND ONE CONTACT BLOCK						
METAL OPERATOR MODEL NO.	PRICE	PLASTIC OPERATOR MODEL NO.	PRICE	BUTTON STYLE	OPERATION	CONTACT
OMPBD7M-MT34PX01	\$48	OMPBD7P-MT34PX01	\$45	30 mm mushroom	Maintained	1 NC
OMPBD7M-MT34PX10	48	OMPBD7P-MT34PX10	45	30 mm mushroom	Maintained	1 NO
OMPBD7M-MT34PX01S	58	OMPBD7P-MT34PX01S	55	30 mm mushroom	Maintained	1 GCB
OMPBD7M-MT44PX01	51	OMPBD7P-MT44PX01	47	40 mm mushroom	Maintained	1 NC
OMPBD7M-MT44PX10	51	OMPBD7P-MT44PX10	47	40 mm mushroom	Maintained	1 NO
OMPBD7M-MT44PX01S	61	OMPBD7P-MT44PX01S	57	40 mm mushroom	Maintained	1 GCB
OMPBD7M-MT64PX01	56	OMPBD7P-MT64PX01	52	60 mm mushroom	Maintained	1 NC
OMPBD7M-MT64PX10	56	OMPBD7P-MT64PX10	52	60 mm mushroom	Maintained	1 NO
OMPBD7M-MT64PX01S	66	OMPBD7P-MT64PX01S	62	60 mm mushroom	Maintained	1 GCB
OMPBD7M-MK44PX01	95	OMPBD7P-MK44PX01	91	Keyed 40 mm	Maintained	1 NC
OMPBD7M-MK44PX10	95	OMPBD7P-MK44PX10	91	Keyed 40 mm	Maintained	1 NO
OMPBD7M-MK44PX01S	105	OMPBD7P-MK44PX01S	101	Keyed 40 mm	Maintained	1 GCB

Come complete with one operator, one tool-less latch and one contact block.
Up to 6 contact blocks can be used per operator.

ACCESSORIES

MODEL NO.	PRICE	DESCRIPTION			
OMPBD7-N2	\$4.00	22.5 mm (0.89") hole plug			
OMPBD7-AW2	5.50	Mounting ring wrench for plastic or metal operators.			
OMPBD7-AKR3825	9.50	Additional set of keys			
CONTACT BLOCKS, UP TO 6 PER OPERATOR					
MODEL NO.	PRICE	DESCRIPTION			
OMPBD7-X01	\$8.50	One NC contact block			
OMPBD7-X10	8.50	One NO contact block			
OMPBD7-X01L	8.50	One NCLB, late break contact block			
OMPBD7-X10E	8.50	One NOEM, early make contact block			
OMPBD7-X01V	13.00	One NC low voltage contact block			
OMPBD7-X10V	13.00	One NO low voltage contact block			
OMPBD7-X01S	16.00	GCB—Guardian Contact Block for E-stops			
INSCRIPTION CAPS FOR NO CAP PUSHBUTTONS					
MODEL NO.	PRICE	DESCRIPTION			
OMPBD7-AF301	\$2.75	Green "START" cap for flush momentary pushbuttons			
OMPBD7-AF306	2.75	Green "I" cap for flush momentary pushbuttons			
OMPBD7-AF402	2.75	Red "O" cap for flush momentary pushbuttons			
OMPBD7-AF405	2.75	Red "STOP" cap for flush momentary pushbuttons			
OMPBD7-AF3CE166	2.75	Green "ON" cap for flush momentary pushbuttons			
OMPBD7-AE402	2.75	Red "O" cap for flush momentary pushbuttons			
OMPBD7-AE405	2.75	Red "STOP" cap for flush momentary pushbuttons			
LEGENDS—BLACK WITH WHITE LETTERS					
MODEL NO.	PRICE	LEGEND	MODEL NO.	PRICE	LEGEND
OMPBD7-34BE101	\$4	AUTO	OMPBD7-34BE163	\$4	OFF
OMPBD7-34BE107	4	CLOSE	OMPBD7-34BE166	4	ON
OMPBD7-34BE110	4	DOWN	OMPBD7-34BE170	4	OPEN
OMPBD7-34BE113	4	FAULT	OMPBD7-34BE188	4	REVERSE
OMPBD7-34BE114	4	FAST	OMPBD7-34BE193	4	RUN
OMPBD7-34BE120	4	FORWARD	OMPBD7-34BE201	4	SLOW
OMPBD7-34BE126	4	HAND	OMPBD7-34BE208	4	START
OMPBD7-34BE129	4	HIGH	OMPBD7-34BE212	4	STOP
OMPBD7-34BE148	4	LOW	OMPBD7-34BE223	4	UP



SPECIFICATIONS FOR SERIES OMPBD7— HEAVY DUTY/OIL TIGHT



Front-of-Panel (Operators) ¹		
DESCRIPTION	PLASTIC (OMPBD7P)	METAL (OMPBD7M)
MECHANICAL RATINGS		
Vibration (assembled to panel)	[G] Tested at 10 ...2000 Hz, 1.52 mm displacement (peak-to-peak) max/10 G max for 3 hr duration, no damage	
Shock	[G] Tested at 1/2 cycle sine wave for 11 ms; no damage at 100 G	
Degree of Protection ²	UL Type 3/3R/4/4X/12/13 (IP65/66)	UL Type 3/3R/4/12/13 (IP65/66)
Mechanical Durability per EN 60947-5-1 (Annex C)	10,000,000 Cycles 1,000,000 Cycles 500,000 Cycles 300,000 Cycles 100,000 Cycles	Momentary push buttons, momentary mushroom Multi-function, Selector Switch, Key Selector Switch, Selector Jog Non-illuminated Push-Pull E-Stop Twist-to-Release E-Stop, Illuminated Push-Pull E-Stop, Maintained Push Buttons, selector switches Potentiometer, Toggle Switch
Operating Forces (typical with one contact block)	[N] Flush/extended = 5N; E-stop = 36N; Mushroom = 9N	
Operating Torque (typical application with one contact block)	[N·m] Selector switch = 0.25 N·m (2.2 lb-in.)	
Mounting Torque	[N·m] 1.7 N·m (15 lb-in)	4.4 N·m (40 lb-in)
MECHANICAL RATINGS		
Temperature Range (operating) ³	[°C] -25 to 70°C (-13 to 158°F)	
Temperature range (short-term storage)	[°C] -40 to 85°C (-40 to 185°F)	
Humidity	[%] 50...95% RH from 25 to 60°C (77 to 140°F) per: Procedure IV of MIL-STD-810C, Method 507.1 cycling test	

Notes:

1 Performance data given in this publication is provided only as a guide for the user in determining suitability and do not constitute a performance warranty of any kind. Such data may represent the results of accelerated testing at elevated stress levels, and the user is responsible for correlating the data to actual application requirements. ALL WARRANTIES AS TO ACTUAL PERFORMANCE, WHETHER EXPRESS OR IMPLIED, ARE EXPRESSLY DISCLAIMED.

2 Momentary mushroom operators are IP65, multi-function operators have no Type 13 rating. Plastic operators with keys have no Type 4X rating.

3 Operating temperatures below 0°C (32°F) are based on the absence of freezing moisture and liquids, UL recognized to 55°C (131°F) - incandescent module, max 40°C (104°F).



Back-of-Panel Components ¹				
DESCRIPTION	PLASTIC (OMPBD7P)		METAL (OMPBD7M)	
ELECTRICAL RATINGS				
Standard Contact Block Ratings	A600, Q600, 600 Vac, AC15, DC 13 to EN 60947-5-1 and UL 508, 17V, 5mA min			
Low Voltage Contact Block Ratings ⁴	5V, 1mA DC min. C300, R150, AC 15, DC 13 to EN 60947-5-1 and UL 508			
LED Module Ratings	Nominal Voltage	Range	Current Draw	Frequency
	24 Vac	0...29 Vac	31 mA	50/60 Hz
	24 Vdc	10...30 Vdc	24 mA	DC
	120 Vac	70...132 Vac	25 mA	50/60 Hz
	240 Vac	180...264 Vac	22 mA	50/60 Hz
Thermal Current	[A]	10 A max enclosed (40°C ambient) to UL 508, EN 60947-5-1		
Wire Capacity Screw terminal ⁵ Spring-clamp terminal	[AWG]	#18...12 AWG (0.75...2.5 mm ²) Max (2) #14 AWG or (1) #12 AWG		
	[AWG]	#18...14 AWG (0.75...1.5 mm ²)		
Recommended Tightening Torque on Screw Terminals	[N]	0.7...0.9 N • m (6...8 lb-in)		
Insulation Voltage	[Ui]	Ui = 690 V (screw terminal) Ui = 300 V (screwless terminal)		
Dielectric Strength (Min)	[V]	2500 V for one minute		
External Short Circuit Protection Standard blocks Low voltage contact blocks	10 A type gL/gG cartridge fuse to EN 60269-2-1 or gN (Class J to UL 248-8 or Class C to UL 248-4)			
	6 A type gL/gG cartridge fuse to EN 60269-2-1 or gN (Class J to UL 248-8 or Class C to UL 248-4)			
Electrical Shock Protection	Finger-safe conforming to IP2X			
MECHANICAL RATINGS				
Vibration (assembled to panel)	[G]	10...2000 Hz, 1.52 mm displacement (peak-to-peak) max/10 G max 6 hr		
Shock	[G]	Tested at 1/2 cycle sine wave for 11 ms and no damage at 100 G max		
Contact durability per EN 60947-5-1 (Annex C)	10,000,000 cycles			
Contact Operation	NO	Slow double make and break		
	NC	Slow double make and break - positive opening		
	NOEM	Double break / double make / early make		
	NCLB	Double break / double make, late break - positive opening		
	NCEB	Double break / double make, early break - positive opening		
Push Button Travel to Change Electrical State	NC and NOEM	1.5 mm (0.060 in)		
	NO and NCLB	2.5 mm (0.1 in)		
Operating Forces (Typical)	[N]	3.4 N: each single circuit contact block 5...6.5 N: each dual circuit contact block		

Notes:

¹ Performance data given in this publication is provided only as a guide for the user in determining suitability and do not constitute a performance warranty of any kind. Such data may represent the results of accelerated testing at elevated stress levels, and the user is responsible for correlating the data to actual application requirements. ALL WARRANTIES AS TO ACTUAL PERFORMANCE, WHETHER EXPRESS OR IMPLIED, ARE EXPRESSLY DISCLAIMED.

⁴ Low voltage contacts are recommended for applications below 17 V, 5 mA.

⁵ Wires less than #18 (0.75 mm²) may not hold in terminal securely.



UNITED STATES

www.omega.com
1-800-TC-OMEGA
Stamford, CT.

CANADA

www.omega.ca
Laval(Quebec)
1-800-TC-OMEGA

GERMANY

www.omega.de
Deckenpfronn, Germany
0800-8266342

UNITED KINGDOM

www.omega.co.uk
Manchester, England
0800-488-488

FRANCE

www.omega.fr
Guyancourt, France
088-466-342

CZECH REPUBLIC

www.omegaeng.cz
Karviná, Czech Republic
596-311-899

BENELUX

www.omega.nl
Amstelveen, NL
0800-099-33-44



More than 100,000 Products Available!

• Temperature

Calibrators, Connectors, General Test and Measurement Instruments, Glass Bulb Thermometers, Handheld Instruments for Temperature Measurement, Ice Point References, Indicating Labels, Crayons, Cements and Lacquers, Infrared Temperature Measurement Instruments, Recorders Relative Humidity Measurement Instruments, RTD Probes, Elements and Assemblies, Temperature & Process Meters, Timers and Counters, Temperature and Process Controllers and Power Switching Devices, Thermistor Elements, Probes and Assemblies, Thermocouples Thermowells and Head and Well Assemblies, Transmitters, Wire

• Flow and Level

Air Velocity Indicators, Doppler Flowmeters, Level Measurement, Magnetic Flowmeters, Mass Flowmeters, Pitot Tubes, Pumps, Rotameters, Turbine and Paddle Wheel Flowmeters, Ultrasonic Flowmeters, Valves, Variable Area Flowmeters, Vortex Shedding Flowmeters

• pH and Conductivity

Conductivity Instrumentation, Dissolved Oxygen Instrumentation, Environmental Instrumentation, pH Electrodes and Instruments, Water and Soil Analysis Instrumentation

• Data Acquisition

Auto-Dialers and Alarm Monitoring Systems, Communication Products and Converters, Data Acquisition and Analysis Software, Data Loggers Plug-in Cards, Signal Conditioners, USB, RS232, RS485 and Parallel Port Data Acquisition Systems, Wireless Transmitters and Receivers

• Pressure, Strain and Force

Displacement Transducers, Dynamic Measurement Force Sensors, Instrumentation for Pressure and Strain Measurements, Load Cells, Pressure Gauges, Pressure Reference Section, Pressure Switches, Pressure Transducers, Proximity Transducers, Regulators, Strain Gages, Torque Transducers, Valves

• Heaters

Band Heaters, Cartridge Heaters, Circulation Heaters, Comfort Heaters, Controllers, Meters and Switching Devices, Flexible Heaters, General Test and Measurement Instruments, Heater Hook-up Wire, Heating Cable Systems, Immersion Heaters, Process Air and Duct, Heaters, Radiant Heaters, Strip Heaters, Tubular Heaters