

NORGREN EXCELON® SMOOTH START/ EXHAUST VALVES

P72F Series



- In-Line or Modular Installation
- Controls Increase of Downstream Pressure on Start Up. Cylinders and Other Air Operated Devices are Eased Into Normal Operating Positions, Reducing the Possibility of Equipment Damage and Hazards to the User
- Blocks Inlet Air and Exhausts Downstream Air When Pilot Signal is Removed
- Optional Manual Slide Can be Padlocked in Closed Position
- Solenoid Pilot Operation
- Designed Primarily for Use in Start-Up and Shutdown of Equipment

SPECIFICATIONS

Fluid: Compressed air

Maximum Pressure Solenoid

Operated: Depending on solenoid rating [must not exceed 17 bar (250 psig)]

Maximum Pressure Pilot

Operated: 17 bar (250 psig)

Minimum Operating Pressure:

3 bar (44 psig)

Operating Temperature Solenoid

Operated: Dependent on solenoid rating [must be within range -20 to 65°C (0 to 150°F)](72)
[must be within range -20 to 80°C (0 to 175°F)](74)

Operating Temperature Pilot

Operated, 72*: -20 to 65°C

(0 to 150°F)

74: -20 to 80°C (0 to 175°F)

MATERIALS

Body:

72: Zinc alloy

74: Aluminum

Elastomers: Synthetic materials

Filter Discs: Sintered plastic

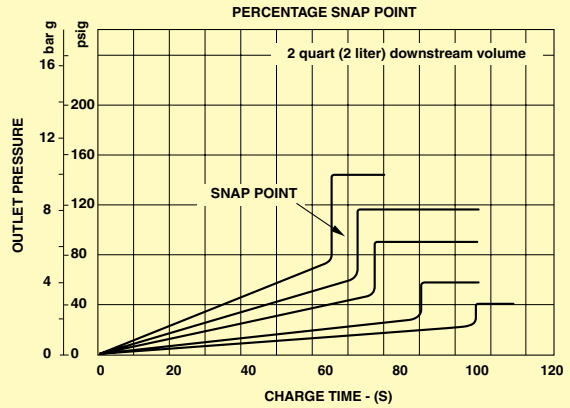
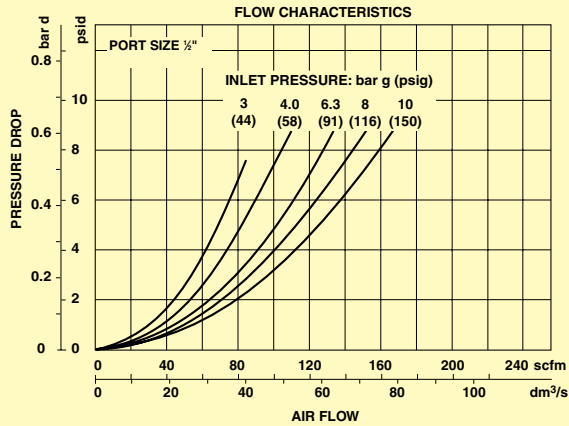
Internal Components: Brass/steel

*Air supply must be dry enough to avoid ice formation at temperatures below 2°C (35°F).

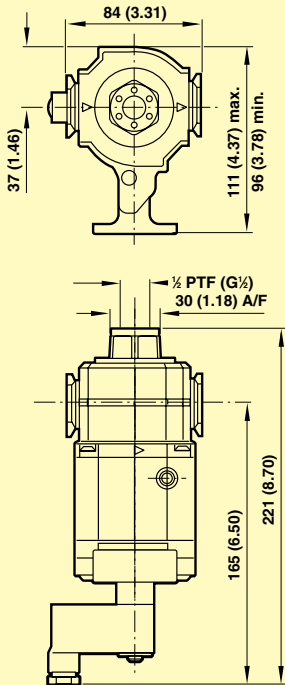
P74F-4AC-PFA
shown smaller
than actual size.



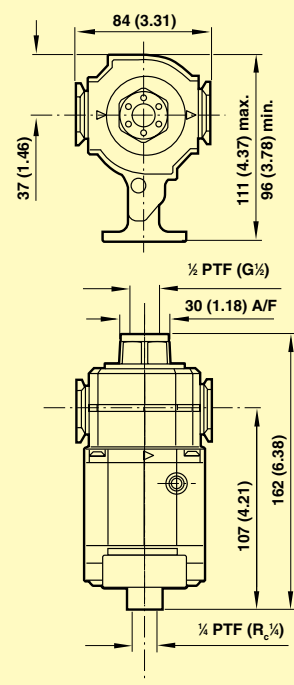
TYPICAL PERFORMANCE CHARACTERISTICS



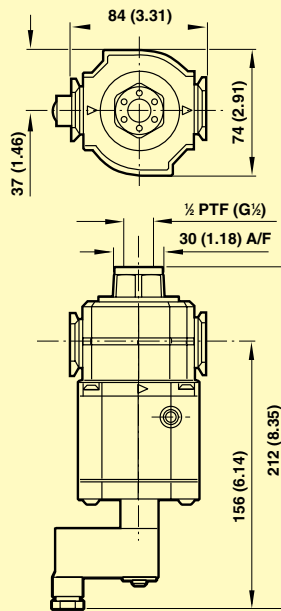
Solenoid operated plus manual shut-off with lockout



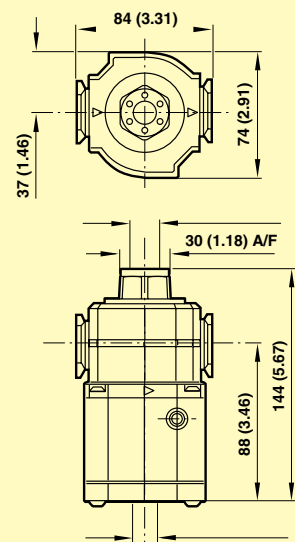
Air pilot operated plus manual shut-off with lockout



Solenoid operated



Air pilot operated



Dimensions: mm (inch)

To Order Visit omega.com/p72f-2ac-pfa

MODEL NO.	PORT SIZE (inch)	OPERATION TYPE*	WEIGHT kg (lb)
P72F-2AC-PFA	1/4	Solenoid	0.91 (2.0)
P72F-3AC-PFA	3/8	Solenoid	0.90 (1.98)
P74F-3AC-PFA	3/8	Solenoid	1.08 (2.4)
P74F-4AC-PFA	1/2	Solenoid	1.05 (2.3)

* Solenoid operated models are supplied with 0.87", 24 Vdc 2 wire coil and connector plug without indicator light plugs.
To select alternative voltages and other applications refer to the options selector. For connector plugs, visit omega.com.
Ordering Example: P72F-2AC-PFA, smooth start/exhaust valve, 1/4" PTF port, 0.87" miniature solenoid, shrouded pushbutton, 24 Vdc coil voltage.