

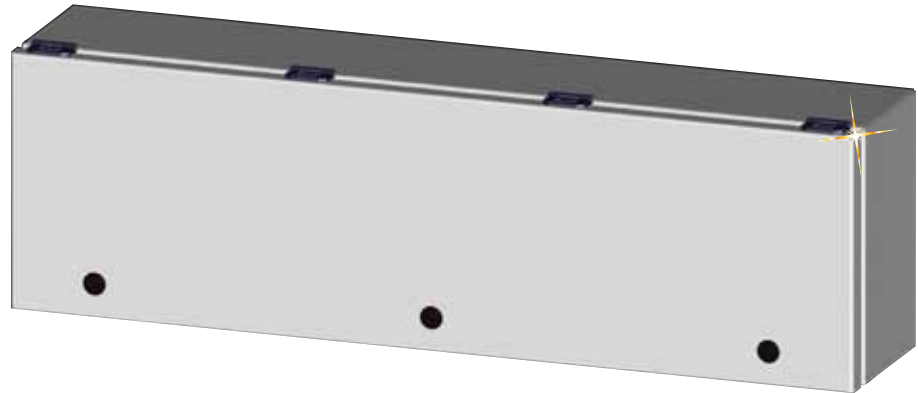
THROUGH JUNCTION WALL MOUNT ELECTRICAL ENCLOSURES

SCE-TJ Series

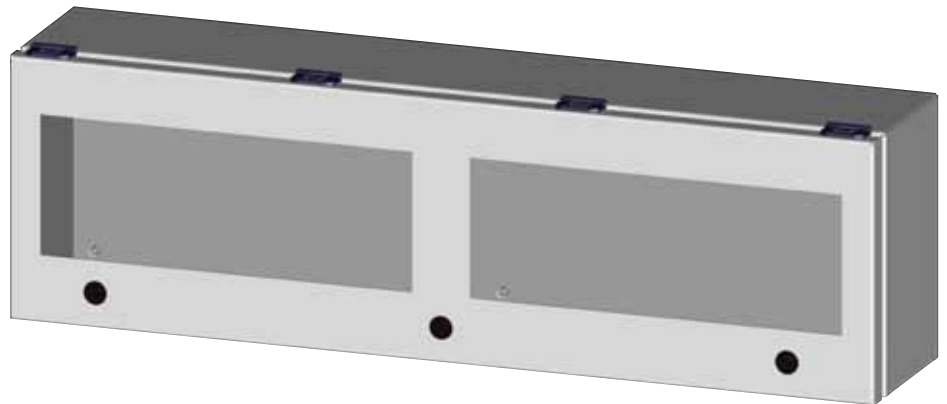


For a
Selection of
Terminal Blocks,
DIN Rails and
Power Supplies,
Visit [omega.com/
auto](http://omega.com/auto)

- 0.063" Carbon or 304 Stainless Steel
- Seams Continuously Welded and Ground Smooth
- Flange Trough Collar Around All Sides of Door Opening
- Oil-Resistant Gasket
- Standoffs Provided for Mounting Optional Sub-Panels
- Doors Open 180° with Removable Hinges
- Black Mini Quarter Turn Latches
- Latches are Opened or Closed with a Screwdriver
- Sealing Washers and Hole Plugs Included
- Ground Stud on Door and Body
- Mounting Holes in Back of Enclosure
- Mounting Feet Included
- Padlocking or Keylocking Latches, and Tamper-Resistant Hardware is Available



SCE-L9126ELJ electrical junction enclosure shown smaller than actual size.



SCE-L9126ELJW, electrical junction enclosure with viewing window shown smaller than actual size.

The SCE-TJ Series is designed to house electrical controls, instruments and components used in an indoor or outdoor environment. They provide a degree of protection for the equipment inside the enclosure against ingress of solid foreign objects (falling dirt); and provide a degree of protection with respect to the harmful effects on the equipment due to the ingress of water (rain, sleet, snow).

SPECIFICATIONS

Finish: Ansi-61 gray powder coating inside and out

Industry Standards (IS2):
For carbon steel

NEMA: Type 4, 12 and Type 13

UL Listed: Type 4 and 12

CSA: Type 4 and 12

IEC: 60529 IP66

Industry Standards (IS5): For 304 stainless steel

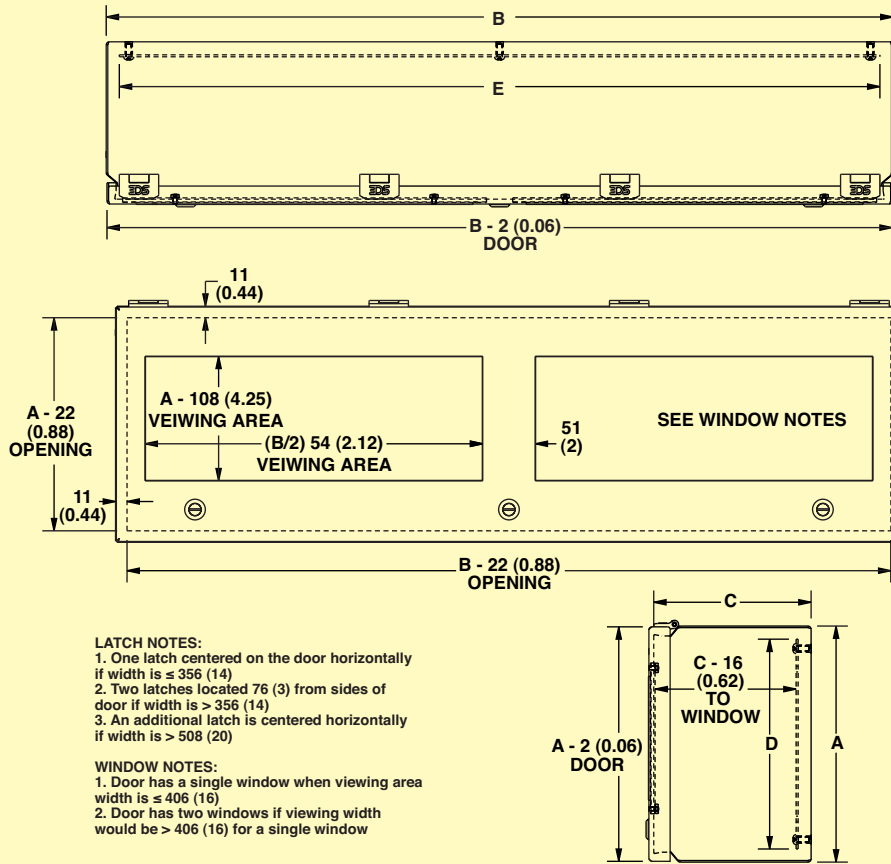
NEMA: Type 4, 4X, 12 and Type 13

UL Listed: Type 4, 4X and 12

CSA: Type 4, 4X and 12

IEC: 60529 IP66

Dimensions: mm (inch)



Dimensions are the same for 304 SS models.

To Order

ENCLOSURES MODEL NO.	HEIGHT A (inch)	WIDTH B (inch)	DEPTH C (inch)	SUB-PANELS MODEL NO.	HEIGHT D (inch)	WIDTH E (inch)
SCE-L9126ELJ	9	12	6	SCE-9P12L	8	11
SCE-L9186ELJ	9	18	6	SCE-9P18L	8	17
SCE-L9246ELJ	9	24	6	SCE-9P24L	8	23
SCE-L9306ELJ	9	30	6	SCE-9P30L	8	29
SCE-L9366ELJ	9	36	6	SCE-9P36L	8	35
WINDOW MODELS						
SCE-L9126ELJW	9	12	6	SCE-9P12L	8	11
SCE-L9186ELJW	9	18	6	SCE-9P18L	8	17
SCE-L9246ELJW	9	24	6	SCE-9P24L	8	23
SCE-L9306ELJW	9	30	6	SCE-9P30L	8	29
SCE-L9366ELJW	9	36	6	SCE-9P36L	8	35
304 STAINLESS STEEL MODELS						
SCE-L9126ELJSS	9	12	6	SCE-9P12L	8	11
SCE-L9186ELJSS	9	18	6	SCE-9P18L	8	17
SCE-L9246ELJSS	9	24	6	SCE-9P24L	8	23
SCE-L9306ELJSS	9	30	6	SCE-9P30L	8	29
SCE-L9366ELJSS	9	36	6	SCE-9P36L	8	35
304 STAINLESS STEEL MODELS WITH WINDOWS						
SCE-L9126ELJWSS	9	12	6	SCE-9P12L	8	11
SCE-L9186ELJWSS	9	18	6	SCE-9P18L	8	17
SCE-L9246ELJWSS	9	24	6	SCE-9P24L	8	23
SCE-L9306ELJWSS	9	30	6	SCE-9P30L	8	29
SCE-L9366ELJWSS	9	36	6	SCE-9P36L	8	35

Comes complete with mounting feet, sealing washers, and hole plugs.

Ordering Examples: SCE-L9126ELJ, through junction electrical enclosure, 9 H x 12 W x 6" D, and SCE-9P12L sub-panel for 9 x 12" enclosure. SCE-L9246ELJW, through junction electrical enclosure with viewing window, 9 H x 24 W x 6" D, and SCE-9P24L sub-panel for 9 x 24" enclosure.