

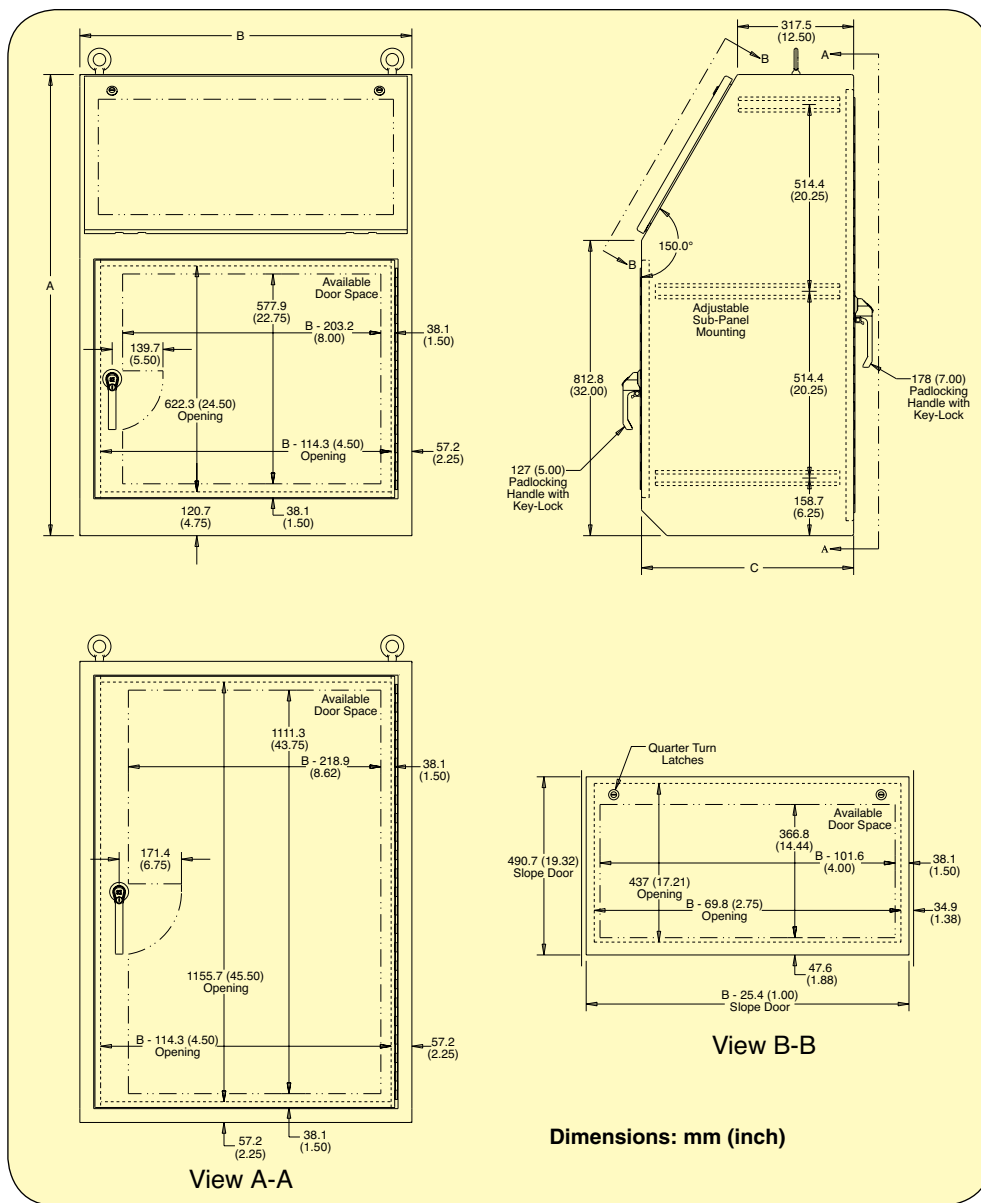
NEMA TYPE 12 SERIES 14 SINGLE DOOR CONSOLES

SCE-14 Consoles Series



SCE-14B shown smaller than actual size.

- 0.104" Carbon Steel
- Sloping Control Panel Attached With Concealed Hinge on Bottom Edge
- Door Opens to 90°
- Black Zinc Die Cast Keylocking/ Padlocking Handles on Front and Rear Doors
- 3-Point Latching Mechanism
- Seams Continuously Welded and Ground Smooth
- Oil-Resistant Gasket on Door
- Optional Equipment Mount to Horizontal Channels Welded to Sides
- Flush Mounted Doors
- Optional Writing Desk and Top Section Available
- Interior Print Pocket
- Removable Eyebolts in Console Body
- Ground Stud on Door



Application

Designed for electronic controls and instruments. Equipment can be mounted on the sloping control panel door. Interior components mount to stationary panels. Heavy duty construction provides protection from dirt, oil, dust, and water.

Finish

White powder coated inside and ANSI-61 recoatable gray finish outside over phosphatized surfaces. Optional top sections are ANSI-61 recoatable gray finish inside and outside. Optional panels are powder coated white.

Industry Standards

NEMA Type 12 & Type 13
 UL Listed Type 12
 CSA Type 12
 IEC 60529 IP 55

To Order

MODEL NO.	DESCRIPTION	HEIGHT (A) (inch)	WIDTH (B) (inch)	DEPTH (C) (inch)
TYPE 12 SERIES 14 SINGLE DOOR CONSOLES—24" WIDE				
SCE-14B	Console body	50.00	24.00	23.00
SCE-14T	Console top	16.00	24.00	12.50
SCE-14P1	Swing-out sub-panel	22.00	18.12	—
SCE-14P2	Half sub-panel	22.00	17.00	—
SCE-14P3	Full sub-panel	42.25	17.00	—
SCE-14R	Set of 2 rack angles	29.00	—	—
SCE-14W	Writing desk	24.00	10.00	—
TYPE 12 SERIES 14 SINGLE DOOR CONSOLES—36" WIDE				
SCE-1436B	Console body	50.00	36.00	23.00
SCE-1436T	Console top	16.00	36.00	12.50
SCE-1436P1	Swing-out sub-panel	22.00	30.12	—
SCE-1436P2	Half sub-panel	22.00	29.00	—
SCE-1436P3	Full sub-panel	42.25	29.00	—
SCE-1436W	Writing desk	36.00	10.00	—

Ordering Examples: *SCE-14B* Type 12 series 14 console enclosure.

SCE-1436B, Type 12, single-door console body, 50 H x 36 W x 23" D, *SCE-1436P1*, swing-out sub-panel.