

IN LINE VALVES

DIRECTIONAL CONTROL VALVES

V60 Series

Valve assemblies ready to install with all accessories available

All models shown smaller than actual size.

OM-AIR-V61RA11A-A313JH



OM-AIR-V60P4D7A-XP0900

OM-AIR-V61R417A-A313JH

- Valve Type: 3-Port/2-Position, 5-Port/2-Position, and Modular Fixed Length Manifold 2 x 3/2
- Low Power Consumption
- Manifold System with Easy Assembly Available
- High Flow Rate
- Manual Overrides

- Operates Under Pressure of up to 8 Bar (116 psi)
- Requires Air Filtration of 50 Microns or Better
- 24 Vdc Operation
- DIN Connector Type C
- Through Hole Wall Mounting Manifold
- Temperature Range of -10 to 50°C (14 to 122°F)

SPECIFICATIONS

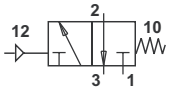
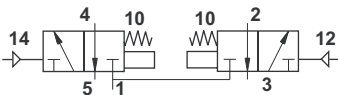
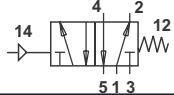
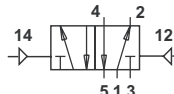




Valves V60-V62: Air/spring or 5/3 (with APB)

Manual Override: Push type

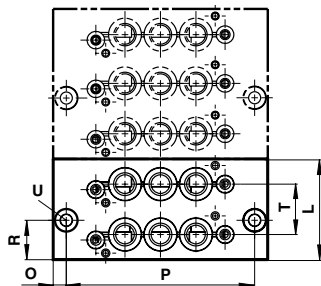
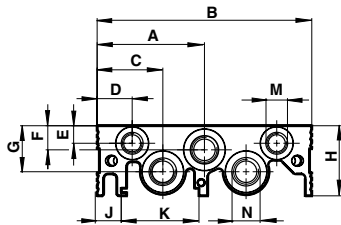
Voltage: 24 Vdc

Port Size: 1/8", 1/4", and 3/8" available

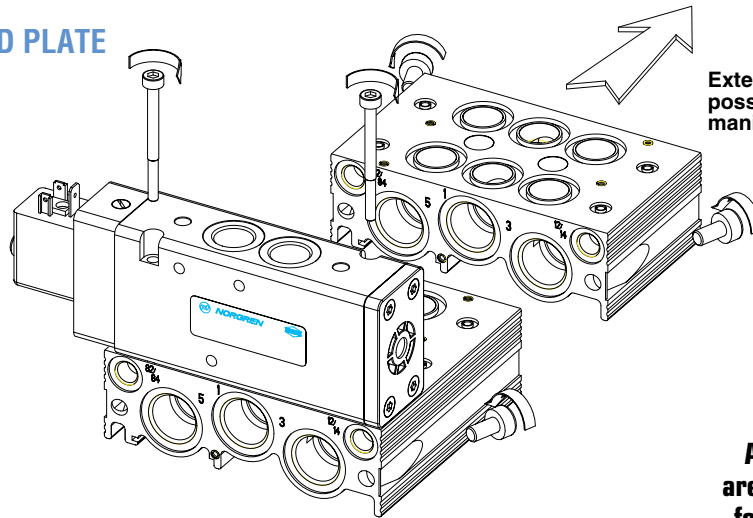
PILOT VALVE MODELS

ACTUATION	PORT SIZE (in)	FLOW (L/MIN)	OPERATING PRESSURE (BAR)	PILOT PRESSURE (BAR)
3/2 VALVES - PILOT ACTUATED				
Pilot/Spring - NC 	1/8	750	-0,9 ... 10	2,5 ... 10
	1/4	1300	-0,9 ... 10	2,5 ... 10
	3/8	2600	-0,9 ... 10	2,5 ... 10
2 X 3/2 VALVES - PILOT ACTUATED				
NC/NC 	1/8	500	-0,9 ... 10	3 ... 10
	1/4	950	-0,9 ... 10	3 ... 10
	3/8	1900	-0,9 ... 10	3 ... 10
5/2 VALVES - PILOT ACTUATED				
Pilot/Spring 	1/8	750	-0,9 ... 10	2,5 ... 10
	1/4	1300	-0,9 ... 10	1,5 ... 10
	3/8	2600	-0,9 ... 10	2,5 ... 10
5/3 VALVES - PILOT ACTUATED				
APB 	1/8	500	-0,9 ... 10	3 ... 10
	1/4	950	-0,9 ... 16	3 ... 10
	3/8	1900	-0,9 ... 10	3 ... 10
ACCESSORIES				
STRAIGHT FITTING	ELBOW FITTING	PUSH-IN FLOW CONTROLS	BASIC PLUG	
				

V60-V62 SERIES 5/2, 5/3, AND 2 X 3/2 MANIFOLD PLATE



Manifold plate
2 stations + 3 stations



Extension possibilities with manifold plates

Assemblies are Expandable for Flexibility

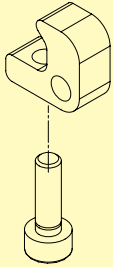
DIMENSIONS (INCHES)

TYPE	A	B	C	D	E	F	G	H	J	K	L	M	N	O	P	R	S	T	U
V60 2 stations	1.93	3.86	1.18	0.63	0.31	0.43	0.83	1.26	0.43	1.40	1.81	1/8	1/4	0.24	3.39	1.10	-	0.91	10-32
V60 3 stations	1.93	3.86	1.18	0.63	0.31	0.43	0.83	1.26	0.43	1.40	2.72	1/8	1/4	0.24	3.39	1.10	-	0.91	10-32
V61 2 stations	2.05	4.09	1.02	0.35	0.31	0.51	0.83	1.30	0.39	1.40	2.05	1/8	3/8	1.57	0.94	1.02	-	1.02	10-32
V61 3 stations	2.05	4.09	1.02	0.35	0.31	0.51	0.79	1.30	0.39	1.40	3.07	1/8	3/8	1.57	0.94	2.05	-	1.02	10-32
V62 2 stations	2.36	4.72	1.14	0.35	0.31	0.59	0.87	1.50	0.51	1.40	2.76	1/8	1/2	1.73	1.26	1.38	-	1.38	M6
V62 3 stations	2.36	4.72	1.14	0.35	0.31	0.59	0.87	1.50	0.51	1.40	4.13	1/8	1/2	1.73	1.26	2.76	-	1.38	M6

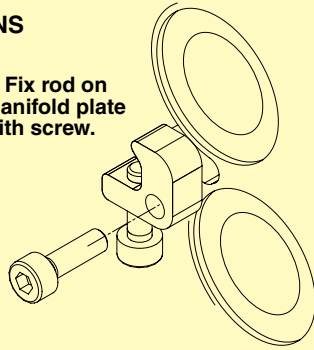
Note: Fixed length manifolds can only be used with 5 ported V60-V62 valves (not suitable for individual 3/2 valves).

DIN RAIL MOUNTING INSTRUCTIONS

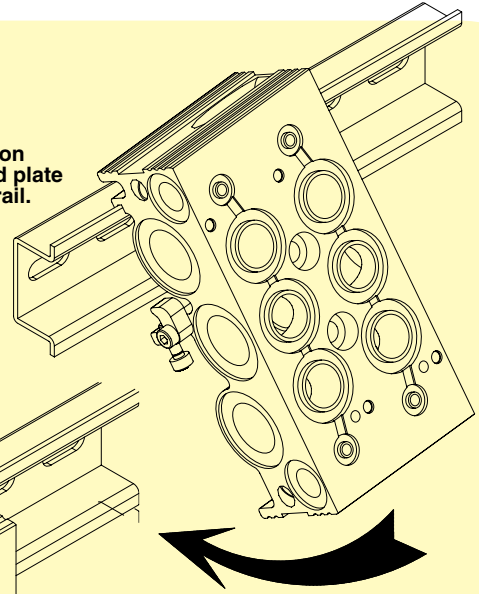
1. Mount screw in rod.



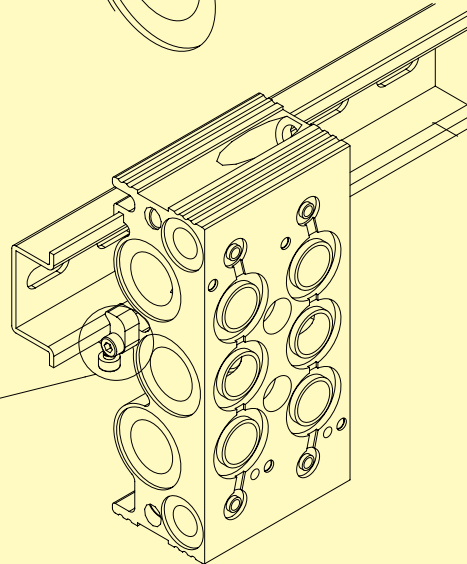
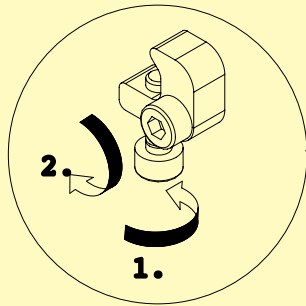
2. Fix rod on manifold plate with screw.



3. Position manifold plate on DIN rail.



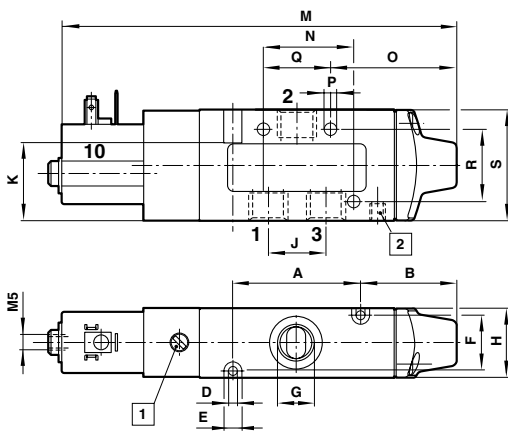
4. Tighten screws in steps as shown on picture.



All valve combinations are available, visit us online for information

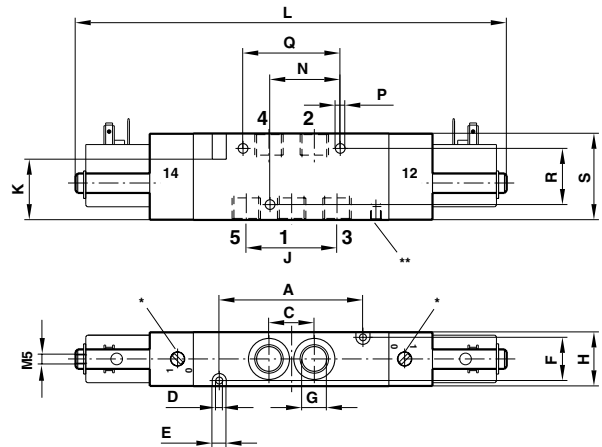
DRAWING 1

3/2 solenoid pilot



DRAWING 2

2 x 3/2 solenoid pilot

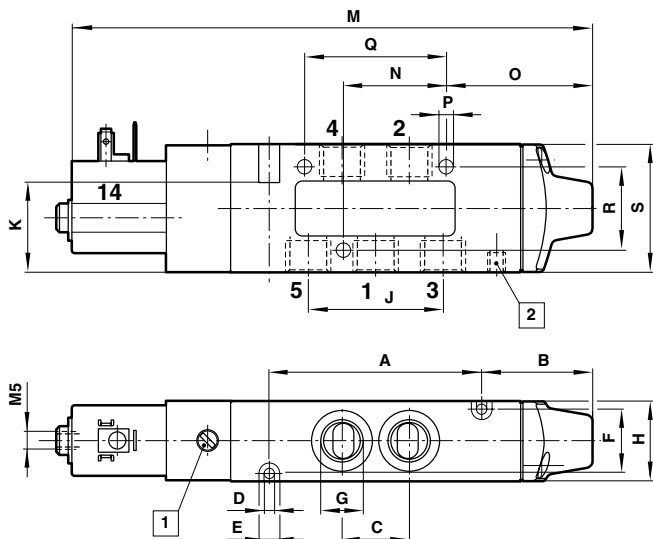


DIMENSIONS (INCHES)

DRAWING NO.	TYPE	A	B	C	D	E	F	G	H	J	K	L	M	N	O	P	Q	R	S	T	U
1	V60	1.38	0.67	-	0.13	0.26	0.67	1/8	0.87	0.64	1.10	-	4.49	0.98	0.98	0.18	0.71	1.02	1.38	-	-
1	V61	1.81	0.79	-	0.13	0.26	0.79	1/4	0.98	0.83	1.10	-	5.22	1.26	1.22	0.18	0.94	1.02	1.57	-	-
1	V62	2.13	0.83	-	0.18	0.31	1.10	3/8	1.34	0.96	1.73	-	5.71	0.47	1.42	0.18	1.02	1.42	2.17	-	-
2	V60	1.97	-	0.64	0.13	0.26	0.67	1/8	0.87	1.28	1.10	6.89	-	0.98	-	0.18	1.32	1.02	1.38	-	-
2	V61	2.60	-	0.83	0.13	0.26	0.79	1/4	0.98	1.65	1.10	7.83	-	1.26	-	0.18	1.73	1.02	1.57	-	-
2	V62	3.07	-	0.96	0.18	0.31	1.10	3/8	1.34	1.92	1.73	8.58	-	0.47	-	0.18	1.02	1.42	2.17	-	-

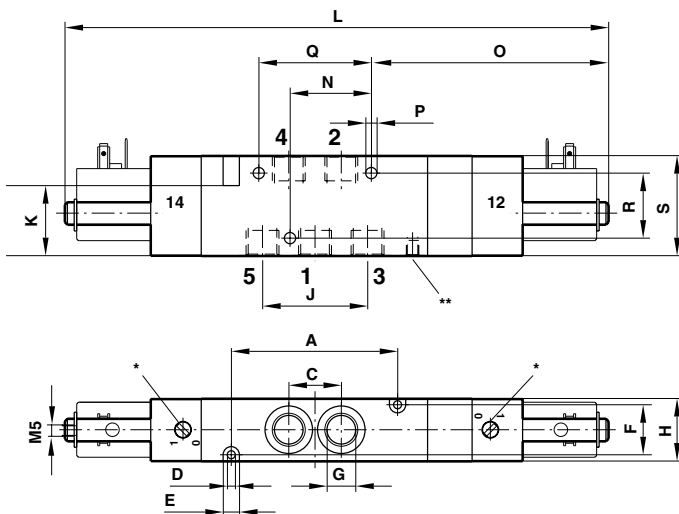
DRAWING 3

5/2 solenoid pilot



DRAWING 4

5/3 solenoid pilot



DIMENSIONS (INCHES)

DRAWING NO.	TYPE	A	B	C	D	E	F	G	H	J	K	L	M	N	O	P	Q	R	S	T	U
3	V60	1.97	0.67	0.64	0.13	0.26	0.67	1/8	0.87	1.28	1.10	-	5.08	0.98	0.98	0.18	1.32	1.02	1.38	-	-
3	V61	2.60	0.79	0.83	0.13	0.26	0.79	1/4	0.98	1.65	1.10	-	6.00	1.26	1.22	0.18	1.73	1.02	1.57	-	-
3	V62	3.07	0.83	0.96	0.18	0.31	1.10	3/8	1.34	1.92	1.73	-	6.69	0.47	2.36	0.18	1.02	1.42	2.17	-	-
4	V60	1.97	-	0.64	0.13	0.26	0.67	1/8	0.87	1.28	1.10	7.44	-	0.98	3.33	0.18	1.32	1.02	1.38	-	-
4	V61	2.60	-	0.83	0.13	0.26	0.79	1/4	0.98	1.65	1.10	8.54	-	1.26	-	0.18	1.73	1.02	1.57	-	-
4	V62	3.07	-	0.96	0.18	0.31	1.10	3/8	1.34	1.92	1.73	9.49	-	0.47	5.20	0.18	1.02	1.42	2.17	-	-

3- AND 5-PORT AIR PILOT VALVES

To Order	
MODEL NO.	DESCRIPTION
3/2 AIR PILOT VALVES	
OM-AIR-V60P4D7A-XP0900	3/2 valve air/spring 1/8" port
OM-AIR-V61R4D7A-XP0900	3/2 valve air/spring 1/4" port
OM-AIR-V62S4D7A-XP0900	3/2 valve air/spring 3/8" port
2 X 3/2 AIR PILOT VALVES	
OM-AIR-V60PADD A-XP0200	2 x 3/2 valve air/air 1/8" port
OM-AIR-V61RADD A-XP0200	2 x 3/2 valve air/air 1/4" port
OM-AIR-V62SADD A-XP0200	2 x 3/2 valve air/air 3/8" port
5/2 AIR PILOT VALVES	
OM-AIR-V60P5D7A-XP0900	5/2 valve air/spring 1/8" port
OM-AIR-V61R5D7A-XP0900	5/2 valve air/spring 1/4" port
OM-AIR-V62S5D7A-XP0900	5/2 valve air/spring 3/8" port
5/3 AIR PILOT VALVES	
OM-AIR-V60P6DDA-XP0200	5/3 valve air/air 1/8" port APB*
OM-AIR-V61R6DDA-XP0200	5/3 valve air/air 1/4" port APB*
OM-AIR-V62S6DDA-XP0200	5/3 valve air/air 3/8" port APB*

*APB—All ports blocked

Ordering Example: OM-AIR-V60P5D7A-XP0900, 1/8" port size N/C pilot valve, OM-AIR-2221032, manifold plate, and B73G-3AK-AD3-RMG, air pressure regulator and filter.



3- AND 5-PORT SOLENOID PILOT VALVES

To Order	
MODEL NO	DESCRIPTION
3/2 SOLENOID VALVES	
OM-AIR-V60P417A-A313JH	3/2 valve solenoid/spring NC 24V 1/8" port
OM-AIR-V61R417A-A313JH	3/2 valve solenoid/spring NC 24V 1/4" port
OM-AIR-V62S417A-A313JH	3/2 valve solenoid/spring NC 24V 3/8" port
2 X 3/2 SOLENOID VALVES	
OM-AIR-V60PA11A-A313JH	2 x 3/2 valve solenoid/spring NC/NC 24V 1/8" port
OM-AIR-V61RA11A-A313JH	2 x 3/2 valve solenoid/spring NC/NC 24V 1/4" port
OM-AIR-V62SA11A-A313JH	2 x 3/2 valve solenoid/spring NC/NC 24V 3/8" port
5/2 SOLENOID VALVES	
OM-AIR-V60P517A-A313JH	5/2 valve solenoid/spring NC 24V 1/8" port
OM-AIR-V61R517A-A313JH	5/2 valve solenoid/spring NC 24V 1/4" port
OM-AIR-V62S517A-A313JH	5/2 valve solenoid/spring NC 24V 3/8" port
5/3 SOLENOID VALVES	
OM-AIR-V60P611A-A313JH	5/3 valve solenoid/spring 24V 1/8" port APB*
OM-AIR-V61R611A-A313JH	5/3 valve solenoid/spring 24V 1/4" port APB*
OM-AIR-V62S611A-A313JH	5/3 valve solenoid/spring 24V 3/8" port APB*

*APB—All ports blocked

Ordering Example: For a 3-station, 4-way directional control valve bank, **OM-AIR-V60P517A-A313JH**, three 1/8" port 24V 5/2 solenoid valves, and **OM-AIR-2221033**, manifold plate for 3 V60 valves.

ACCESSORIES

MODEL NO.	DESCRIPTION	QUANTITY
OM-AIR-2221032	Manifold plate V60 2-valve ports	1
OM-AIR-2221033	Manifold plate V60 3-valve ports	1
OM-AIR-2221132	Manifold plate V61 2-valve ports	1
OM-AIR-2221133	Manifold plate V61 3-valve ports	1
OM-AIR-2221232	Manifold plate V62 2-valve ports	1
OM-AIR-2221233	Manifold plate V62 3-valve ports	1
OM-AIR-0101796	DIN rail mounting kit	1
B72G-2AK-AE3-RMG	Air pressure regulator and filter 1/4"*	1
B73G-3AK-AD3-RMG	Air pressure regulator and filter 3/8"*	1
OM-AIR-0100561	Blanking plate V60	1
OM-AIR-0100563	Blanking plate V61	1
OM-AIR-0100565	Blanking plate V62	1
OM-AIR-T40C1800	Silencer muffler metal	As needed

* Valves require a regulated and filtered air supply to operate properly.