



## OM-50 Series Portable Low Cost Data Loggers Part of the NOMAD® Family

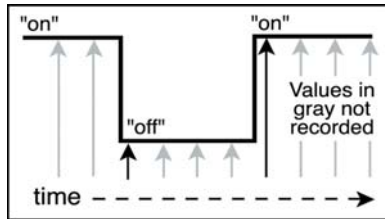
**\$76**

Basic Unit



- ✓ Model OM-51 Monitors Contact Closures
- ✓ Model OM-52 for Motor On/Off Applications

OM-50 Series data loggers record when devices change between on and off or open and closed states and store the time, date and state for each change (the black arrows in the diagram below show when data is recorded).



OM-51 monitors contact closures

These data loggers have two LED indicator lights, one red and one green. One of these LED's will blink every two seconds. If the contact is open or the device is off, the red LED will blink. If the contact is closed or the device is on, then the green LED will blink. Although the LED's blink every other second, the state is checked every half second, with state changes recorded as detected. Simply connect the data logger to your PC using the RS-232 cable and download stored data using the Windows software.

### Specifications

#### GENERAL

**Measurement Capacity:**

2000 state changes

**Time Resolution:** 0.5 seconds

**Minimum State Duration:**

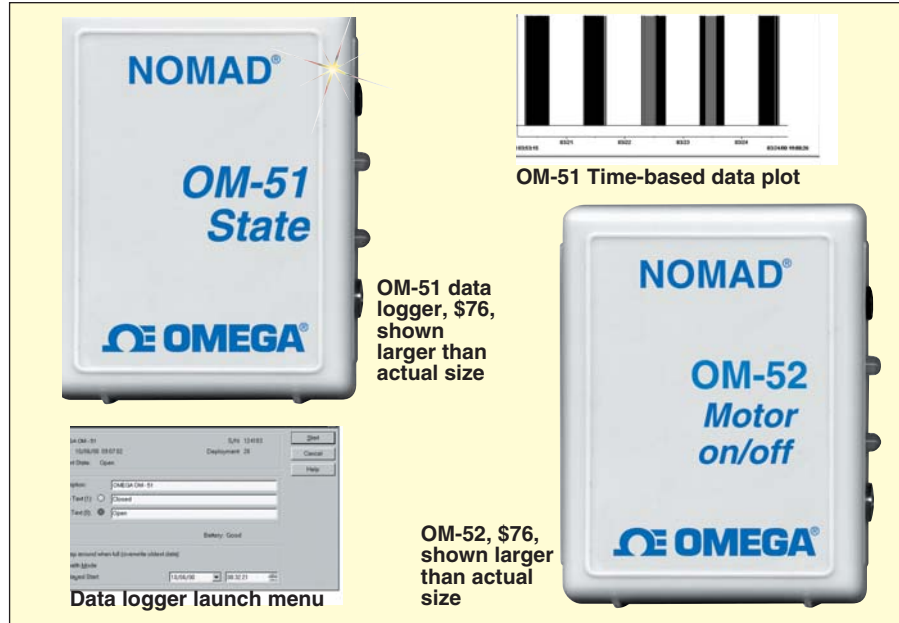
0.5 seconds

**Memory Modes:** Stop

when full, wrap-around when full (user selectable)

**Memory:** Non-volatile EEPROM memory retains data even if battery fails

**Operation:** Blinking LED lights show current state



OM-51 Time-based data plot

OM-51 data logger, \$76, shown larger than actual size

OM-52, \$76, shown larger than actual size

**Time Accuracy:** ±1 minute per week at 20°C (68°F)

**Operating Temperature:** -20 to 70°C (-4 to 158°F)

**Operating Humidity:** 0 to 95% non-condensing

**Storage Temperature:** -20 to 70°C (-4 to 158°F)

**Power:** 3.6 V lithium battery

**Battery Life:** 1 year

**Dimensions:** 68 x 48 x 19 mm (2.4 H x 1.9 W x 0.8 D)

**Weight:** 29 g (1 oz)

### Measurement Specifications

#### OM-51 STATE DATA LOGGER

**Inputs (two inputs):**

A magnetic sensor mounted in the data logger and an external cable for detecting contact closures (external cable is included).

### Spacing Between Data logger and External Magnet:

Closed, less than or equal to 3/4"; open, greater than or equal to 3/4" (external magnet is included)

**External Contact Input:** Passive relay switch or contact closure

#### OM-52 MOTOR ON/OFF DATA LOGGER

**Sensor Type:**

AC field sensor Magnetic Field Threshold: approx. 2 Gauss at 60 Hz; the logger will typically work with AC motors drawing 1A or more

**Mounting:** Mount the data logger on or close to the motor housing or to one phase of the power line to the equipment being monitored

**Angular Response:** The data logger is sensitive to that part of the AC field that is perpendicular to the datalogger's face

**ALL MODELS AVAILABLE FOR FAST DELIVERY!**

### To Order (Specify Model Number)

Model No.	Price	Description
OM-51	\$76	State data logger
OM-52	76	Motor on/off data logger
RD-TEMP-SW-A	55	Windows 98/NT/2000/XP software and RS-232 interface cable with DB9F termination for OM-50 Series data loggers
OM-40-BATT	15	Replacement 3.6V lithium battery for OM-50 Series (package of 10)

Data loggers are supplied with complete operator's manual and mounting kit (hook/loop, magnet and tape). The OM-51 State data logger includes external magnet and external input cable for detecting contact closures.

**Ordering Example:** OM-51 state data logger and RD-TEMP-SW-A Windows software, \$76 + 55 = \$131.



#### UNITED STATES

[www.omega.com](http://www.omega.com)  
1-800-TC-OMEGA  
Stamford, CT.

#### CANADA

[www.omega.ca](http://www.omega.ca)  
Laval(Quebec)  
1-800-TC-OMEGA

#### GERMANY

[www.omega.de](http://www.omega.de)  
Deckenpfronn, Germany  
0800-8266342

#### UNITED KINGDOM

[www.omega.co.uk](http://www.omega.co.uk)  
Manchester, England  
0800-488-488

#### FRANCE

[www.omega.fr](http://www.omega.fr)  
Guyancourt, France  
088-466-342

#### CZECH REPUBLIC

[www.omegaeng.cz](http://www.omegaeng.cz)  
Karviná, Czech Republic  
596-311-899

#### BENELUX

[www.omega.nl](http://www.omega.nl)  
Amstelveen, NL  
0800-099-33-44



## More than 100,000 Products Available!

### • Temperature

Calibrators, Connectors, General Test and Measurement Instruments, Glass Bulb Thermometers, Handheld Instruments for Temperature Measurement, Ice Point References, Indicating Labels, Crayons, Cements and Lacquers, Infrared Temperature Measurement Instruments, Recorders Relative Humidity Measurement Instruments, RTD Probes, Elements and Assemblies, Temperature & Process Meters, Timers and Counters, Temperature and Process Controllers and Power Switching Devices, Thermistor Elements, Probes and Assemblies, Thermocouples Thermowells and Head and Well Assemblies, Transmitters, Wire

### • Flow and Level

Air Velocity Indicators, Doppler Flowmeters, Level Measurement, Magnetic Flowmeters, Mass Flowmeters, Pitot Tubes, Pumps, Rotameters, Turbine and Paddle Wheel Flowmeters, Ultrasonic Flowmeters, Valves, Variable Area Flowmeters, Vortex Shedding Flowmeters

### • pH and Conductivity

Conductivity Instrumentation, Dissolved Oxygen Instrumentation, Environmental Instrumentation, pH Electrodes and Instruments, Water and Soil Analysis Instrumentation

### • Data Acquisition

Auto-Dialers and Alarm Monitoring Systems, Communication Products and Converters, Data Acquisition and Analysis Software, Data Loggers Plug-in Cards, Signal Conditioners, USB, RS232, RS485 and Parallel Port Data Acquisition Systems, Wireless Transmitters and Receivers

### • Pressure, Strain and Force

Displacement Transducers, Dynamic Measurement Force Sensors, Instrumentation for Pressure and Strain Measurements, Load Cells, Pressure Gauges, Pressure Reference Section, Pressure Switches, Pressure Transducers, Proximity Transducers, Regulators, Strain Gages, Torque Transducers, Valves

### • Heaters

Band Heaters, Cartridge Heaters, Circulation Heaters, Comfort Heaters, Controllers, Meters and Switching Devices, Flexible Heaters, General Test and Measurement Instruments, Heater Hook-up Wire, Heating Cable Systems, Immersion Heaters, Process Air and Duct, Heaters, Radiant Heaters, Strip Heaters, Tubular Heaters