

8-Channel RTD Temperature Data Logger Part of the NOMAD® Family

OM-CP-OCTRTD



- ✓ 100Ω PT RTD Input
- ✓ 0.01°C Resolution
- ✓ Real-Time Operation
- ✓ Programmable Start Time
- ✓ User Calibration Through Software

The OM-CP-OCTRTD temperature logger is an 8-channel, battery-powered, stand-alone, RTD-based temperature recorder. This is an all-in-one compact, portable, easy-to-use device that will measure and record up to 10,922 measurements per channel. The storage medium is non-volatile solid state memory, providing maximum data security even if the battery becomes discharged. The device can be started and stopped directly from your computer and its small size allows it to fit almost anywhere. The OM-CP-OCTRTD makes data retrieval quick and easy. Simply plug it into an available COM port and the easy-to-use Windows software does the rest.

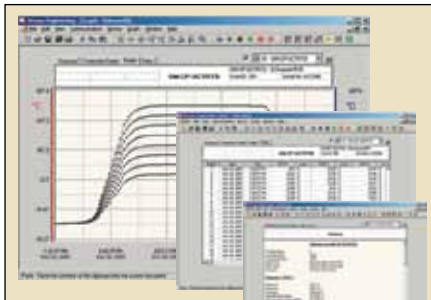
The Windows software converts your PC into a real-time strip chart recorder. Data can be printed in graphical or tabular format and can also be exported to a text or Microsoft Excel file.

Specifications

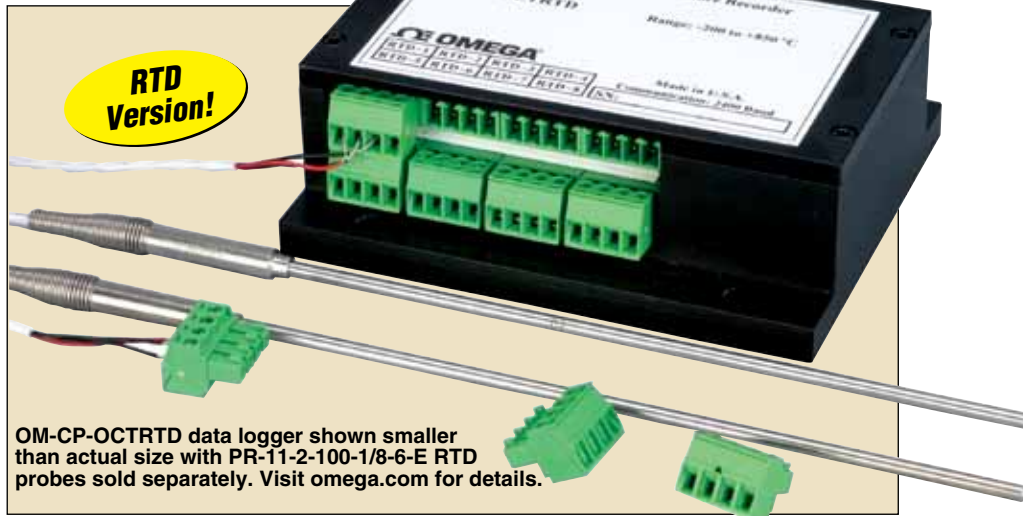
TEMPERATURE

Input Type: 100Ω Pt RTD,
 $\alpha = 0.00385$

Measurement Range:
-200 to 850°C (-328 to 1562°F)



OM-CP-IFC200 Windows software displays data in graphical or tabular format



OM-CP-OCTRTD data logger shown smaller than actual size with PR-11-2-100-1/8-6-E RTD probes sold separately. Visit omega.com for details.

Resolution: 0.01°C
Calibrated Accuracy: ±0.1°C @ 25°C ambient (does not include RTD error)
Specified Accuracy Range: -200 to 850°C (-328 to 1562°F)

RESISTANCE

Nominal Range: 0 to 500Ω
Resolution: 0.001Ω
Calibrated Accuracy: ±0.03Ω @ 25°C ambient
Specified Accuracy Range: 0 to 500Ω
Channels: 8

Input Connection: Removable screw terminal; 2, 3, or 4 wire interface

Start Time: Start time and date are programmable through software

Real-Time Recording: Device may be used with PC to monitor and record data in real time

Memory: 10,922 readings per channel

Recording Interval: 2 sec to 12 hours, selectable through software

Calibration Date: Automatically recorded within device to alert user when calibration is required
Temperature Calibration: Digital calibration is available in software

Power: 9V lithium battery (included); 120 Vac power optional

Battery Life: 1 year typical

Data Format: Date and time stamped, °C, °F, °K, °R, Ω
Time Accuracy: ±1 minute per month at 20°C (when RS232 port not in use)

Computer Interface: PC serial, RS232C COM or USB (interface cable required); 2400 baud

Software: XP SP3/Vista/7 and 8 (32-bit and 64-bit)

Operating Environment: -20 to 60°C (-4 to 140°F)

0 to 95% RH non-condensing
Dimensions: 89 H x 112 W x 39 mm D (3.5 x 4.4 x 1.5")

Weight: 450 g (16 oz)

Material: Black anodized aluminum

To Order Visit omega.com/om-cp-octrtd for Pricing and Details

Model No.	Description
OM-CP-OCTRTD	8-channel RTD temperature data logger
OM-CP-OCTRTD-CERT	8-channel RTD temperature data logger with NIST calibration certificate
OM-CP-IFC200	Windows software and 1.8 m (6') USB interface cable
OM-CP-BAT103	Replacement 9V lithium battery
OM-CP-CONNECTOR-4	Replacement 4 position terminal block connector

Comes complete with 9V lithium battery. Operator's manual and USB cable are included with the OM-CP-IFC200 Windows software (required to operate the data logger and is sold separately). To order data loggers with optional 120 Vac power, add suffix "-AC" to model for additional cost.

Ordering Example: OM-CP-OCTRTD-CERT, 8-channel RTD temperature data logger with NIST calibration certificate, OM-CP-IFC200 Windows software, USB interface cable.