

8-Channel Voltage Data Loggers Part of the NOMAD® Family

OM-CP-OCTVOLT



- ✓ 16-Bit Resolution
- ✓ Programmable Engineering Units, Scale Factor, and Offset Value
- ✓ Memory Wrap-Around
- ✓ User Calibration Through Software
- ✓ Real-Time Operation

The OM-CP-OCTVOLT Series is comprised of low-cost, high-resolution, miniature, battery-powered, standalone voltage input data loggers. In addition, the OM-CP-OCTVOLT allows the user to store predefined engineering units into the device, as well as scale factors and offset values. This lets the user easily linearize and scale a transducer that provides a voltage—automatically and in any user-required units. This capability is ideal for scaling a voltage output. The portable, easy to use

OM-CP-OCTVOLT will read and record up to 16,383 voltage measurements per channel.

The OM-CP-OCTVOLT represents a major leap in both size and performance. Its real-time clock ensures that all data is time and date stamped. The storage medium is non-volatile solid state memory, providing maximum data security even if the battery becomes discharged. The device's small size allows it to fit almost anywhere.



OM-CP-OCTVOLT shown actual size.

Data retrieval is simple. Plug the device into an available COM port and our easy-to-use software does the rest. The software converts a PC into a real-time strip chart recorder. Data can be printed in graphical and tabular format or exported to a text or Microsoft Excel file.

Specifications

Input Channels: 8

Memory: 16,383 readings/channel

Input Connection:

Removable screw terminal

ADC Resolution: 16-bits

Voltage Calibration: Digital calibration is available in software

Calibration Date: Automatically recorded within device to alert user when calibration is required

Recording Interval: 1 second to 12 hours selectable in software

Start Time: Start time and date are programmable through software

Memory Wraparound: Selectable in software

Real-Time Recording: Device can be used with PC to monitor and record data in real-time

Time Accuracy:

±1 minute per month at 20°C

Power: 9V lithium battery (included); 120 Vac power optional

Battery Life: 1 year typical

Data Format: Date and time stamped; μ V, mV, V and other engineering units programmable through software

Computer Interface:

PC serial, RS232C COM or USB (interface cable required); 2400 baud

Software: XP SP3/Vista/7 and 8 (32-bit and 64-bit)

Operating Environment:

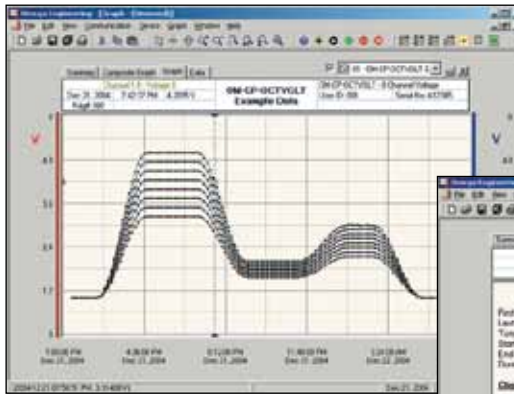
-20 to 60°C (-4 to 140°F)
0 to 95% RH non-condensing

Dimensions:

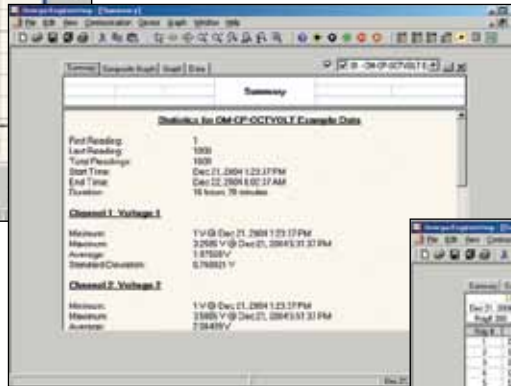
39 D x 112 L x 89 mm W
(1.5 x 4.4 x 3.5")

Weight: 480 g (17 oz)

Material: Black anodized aluminum



OM-CP-IFC200 Windows software displays data in graphical or tabular format



INPUT RANGES	OM-CP-OCTVOLT-100MV	OM-CP-OCTVOLT-2.5V	OM-CP-OCTVOLT	OM-CP-OCTVOLT-30V
Nominal Input Range	±100 mV	0 to 2.5 V	0 to 15 V	0 to 30
Measurement Range	±150 mV	-0.25 to 2.75 V	-1.0 to 16.0 V	-2.0 to 32.0 V
Resolution	5 µV	0.1 mV	0.5 mV	1.0 mV
Accuracy	±0.01% FSR	±0.01% FSR	±0.1% FSR	±0.1% FSR
Input Impedance	>1 KΩ*	>1 KΩ*	>10 KΩ	>10 KΩ
Overload Protection	±5 V	±5 V	±30 V	±48 V

* >1 MΩ during acquisition.

To Order Visit omega.com/om-cp-octvolt for Pricing and Details

Model No.	Description
OM-CP-OCTVOLT	8-channel voltage data logger, 15V input range
OM-CP-OCTVOLT-CERT	8-channel voltage data logger, 15V input range with NIST calibration certificate
OM-CP-OCTVOLT-100MV	8-channel voltage data logger, ±100 mV input range
OM-CP-OCTVOLT-100MV-CERT	8-channel voltage data logger, ±100 mV input range with NIST calibration certificate
OM-CP-OCTVOLT-2.5V	8-channel voltage data logger, 2.5V input range
OM-CP-OCTVOLT-2.5V-CERT	8-channel voltage data logger, 2.5V input range with NIST calibration certificate
OM-CP-OCTVOLT-30V	8-channel voltage data logger, 30V input range
OM-CP-OCTVOLT-30V-CERT	8-channel voltage data logger, 30V input range with NIST calibration certificate
OM-CP-IFC200	Windows software and 1.8 m (6') USB interface cable
OM-CP-BAT103	Replacement 9V lithium battery
OM-CP-CONNECTOR-2	Replacement 2 position terminal block connector for the OM-CP-OCTVOLT, OM-CP-OCTVOLT-2.5V, and OM-CP-OCTVOLT-30V
OM-CP-CONNECTOR-3	Replacement 2 position terminal block connector for the OM-CP-OCTVOLT-100MV

Comes complete with 9V lithium battery.

Operator's manual and USB cable are included with the **OM-CP-IFC200** Windows software, (required to operate the data logger and sold separately). To order data loggers with optional 120 Vac power, add suffix "-AC" to model number for additional cost.

Ordering Example: **OM-CP-OCTVOLT-CERT** 8-channel voltage data logger with NIST calibration certificate and **OM-CP-IFC200** Windows software with USB interface cable.