

OM-CP-RFPROCESS101A Wireless Current mA Transmitter

Part of the NOMAD® Family



- ✓ Multiple Transmitter Configurations
- ✓ Automatically Converts Your PC Into a Strip Chart Recorder
- ✓ Memory Wrap Around
- ✓ Real Time Operation
- ✓ Software Programmable Scale Factor, Offset Value and Engineering Units

The OM-CP-RFPROCESS101A is a battery powered current recorder and wireless transmitter. This is an all-in-one compact, portable, easy to use device that will measure and transmit process measurements. When enabled, the wireless transmitter will transmit readings back to the host computer where the data can be analyzed in real time. These readings are also logged to the device's memory for added data security.

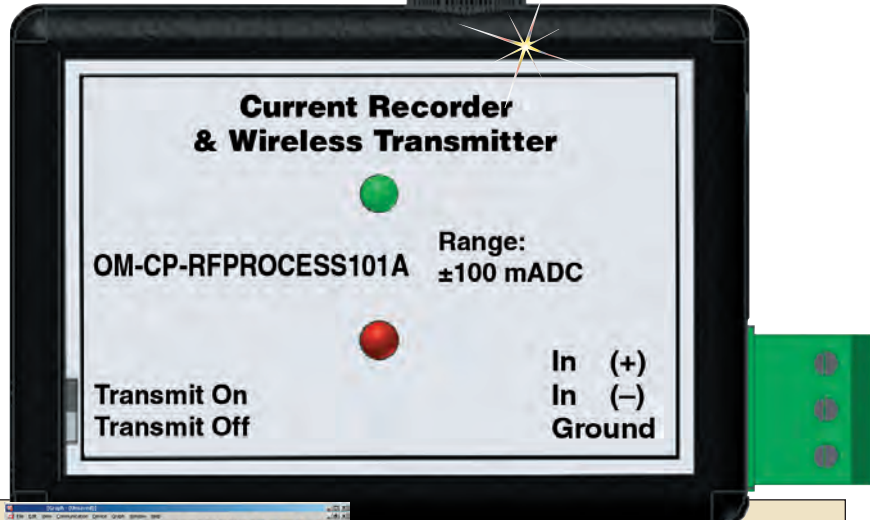
The convenient slide switch allows the transmitter to be turned on or off without affecting the operation of the device. The device can be started, stopped and configured directly from your computer.

Its small size allows it to fit almost anywhere. In addition to the wireless communications, the OM-CP-RFPROCESS101A makes data retrieval quick and easy. Simply plug the device into an empty COM port and our user-friendly software will handle the rest. The software converts your PC into a real time strip chart recorder.

Data can be printed in graphical or tabular format and can be exported to a text or Microsoft Excel file.

OM-CP-RFPROCESS101A shown larger than actual size.

OM-CP-RF Series wireless voltage, current and pulse input transmitters also available. Visit omega.com for details.



Statistics	
Minimum	4 mA
Maximum	20.01 mA
Average	10.9327 mA
Standard Deviation	5.40783 mA

OM-CP-RFC200A, Windows software displays data in graphical or tabular format.

Specifications

Input Connection: Removable screw terminal
Analog Conversion Time: 133 ms
Frequency Rejection: 60 MHz
Temperature Coefficient: <100 ppm/°C; < 50 ppm/°C typical
Specified Accuracy Range: Nominal range @ 25°C
Engineering Units: User may define units up to 10 characters in length (stored within the device)
Scale Factor: User may program any desired scaling factor from ±1.0000E-31 to ±9.9999E+31. The scaling factor is stored within the device.

Memory: 8191 readings; software configurable memory wrap
Reading Interval: Reading every 30 seconds to every 12 hours
Calibration: Digital calibration through software
Data Format: Date and time stamped, A, mA, µA, engineering units specified through software
Time Accuracy: ±1 minute/month at 20 to 30°C
Computer Interface: PC serial, RS-232C COM or USB (interface cable required); 57,600 baud
RF Carrier Frequency: 418 ±0.075 MHz

Input Table	OM-CP-RF PROCESS101A-1MA	OM-CP-RF PROCESS101A-25MA	OM-CP-RF PROCESS101A-100MA
Nominal Range	±1 mA	±25 mA	±100 mA
Measurement Range	±1.25 mA	±30 mA	±1.20 mA
± Input Voltage Range	0 to 2.5 V	0 to 2.5 V	0 to 2.5 V
Resolution	0.05 µA	1 µA	5 µA
Calibrated Accuracy	±0.5% FSR	±0.1% FSR	±0.1% FSR
Input Impedance	50 Ω	10 Ω	2 Ω
Overload Protection	±20 mA	±100 mA	±125 mA

RF Baud Rate: 4800 baud

Maximum Output Power:

<0dBm typical (<1mW)

Receiver Sensitivity

(OM-CP-RFC101A): -90dBm typical

Range:

Line-of-sight: Up to 36 m (120');

Urban: Up to 12 m (40')

Approvals: US (FCC), CA (IC)

Battery Type: 3.6 V lithium

battery (included); user replaceable

Battery Life: 1 year typical,

(1 minute reading rate @25°C)

Software: XP SP3/Vista and 7

(32-bit and 64-bit)

Operating Environment:

-30 to 70°C (-22 to 158°F)

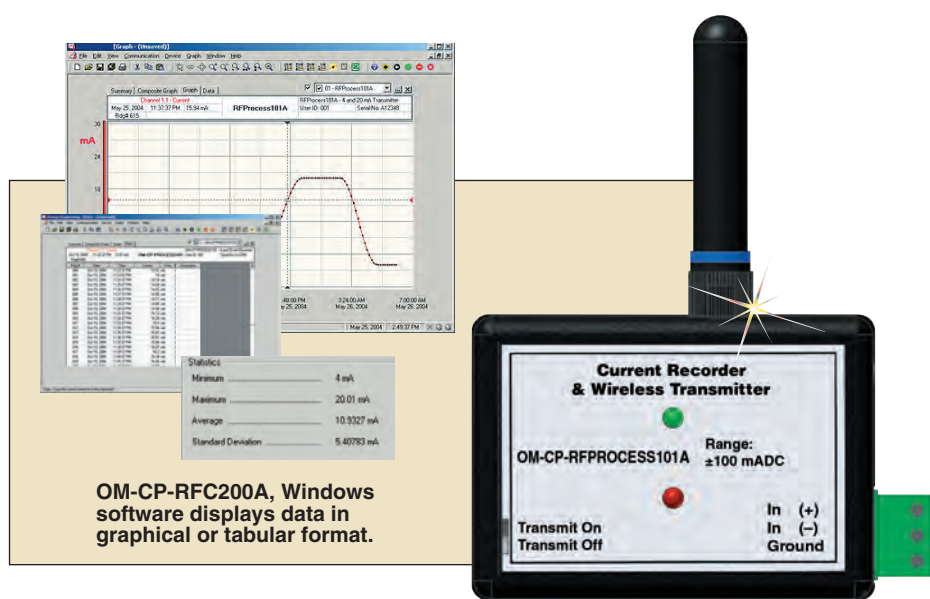
0 to 95% RH non-condensing

Dimensions:

42 H x 68 W x 20 mm D

(1.7 x 2.7 x 0.8")

Weight: 60 g (2 oz)



OM-CP-RFC200A, Windows software displays data in graphical or tabular format.

AVAILABLE FOR FAST DELIVERY!

To Order Visit omega.com/om-cp-rfprocess101a for pricing and details	
Model No.	Description
OM-CP-RFPROCESS101A-1MA	Wireless current transmitter, ±1 mA range
OM-CP-RFPROCESS101A-1MA-CERT	Wireless current transmitter with NIST calibration certificate, ±1 mA range
OM-CP-RFPROCESS101A-25MA	Wireless current transmitter, ±25 mA range
OM-CP-RFPROCESS101A-25MA-CERT	Wireless current transmitter with NIST calibration certificate, ±25 mA range
OM-CP-RFPROCESS101A-100MA	Wireless current transmitter, ±100 mA range
OM-CP-RFPROCESS101A-100MA-CERT	Wireless current transmitter with NIST calibration certificate, ±100 mA range
OM-CP-RFC101A	Receiver package includes RF receiver, 1.2 m (4') RS-232 cable with DB9F termination, Windows software and operator's manual
OM-CP-RFC200A	Receiver package includes RF receiver, 3.7 m (12') USB cable, Windows software and operator's manual
OM-CP-BAT105	Replacement 3.6 V lithium battery
OM-CP-CONNECTOR-3	Replacement 3 position terminal block connector

The OM-CP-RFC200A receiver package is required to operate the wireless transmitter.

Ordering Example: OM-CP-RFPROCESS101A-25MA-CERT wireless current transmitter with NIST calibration certificate, and OM-CP-RFC200A Windows software and USB cable with receiving antenna.