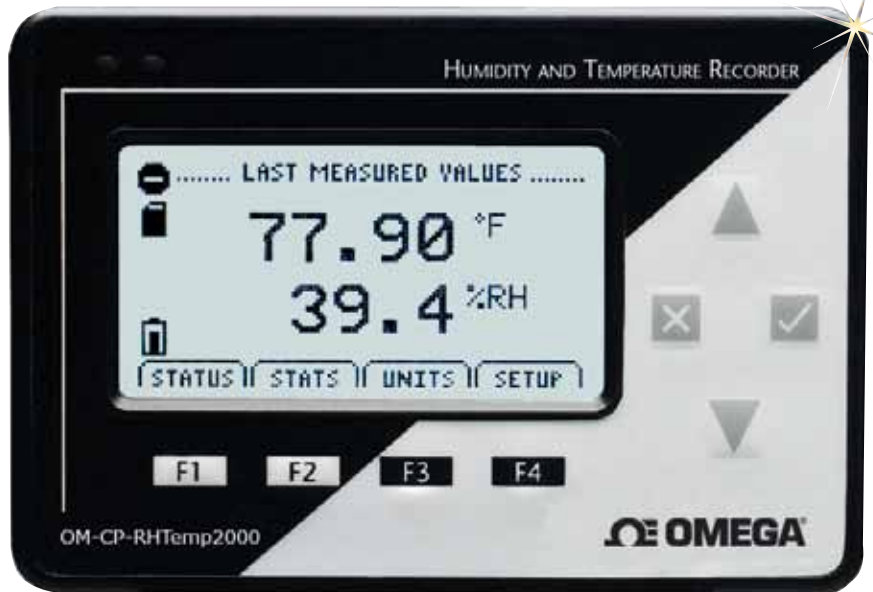


Humidity and Temperature Data Logger with LCD Display Part of the NOMAD® Family

OM-CP-RHTEMP2000



- ✓ Large, Backlit LCD Display
- ✓ Front Keypad with Lock Feature
- ✓ User-Selectable Measurement Units
- ✓ Simultaneous Display of Temperature and Humidity
- ✓ NIST Traceable Calibration
- ✓ Minimum/Maximum and Average Statistics
- ✓ Programmable Start/Stop Time
- ✓ Convenient Status Indicators
- ✓ User Replaceable Battery and External Power
- ✓ Wall Mountable



OM-CP-RHTEMP2000 data logger shown larger than actual size.

The OM-CP-RHTEMP2000 is perfect for applications requiring instant remote readings of environmental parameters, including temperature and humidity.

The 8-button keypad and large LCD provide convenient access to current data and recorder setup. Additionally, memory and battery levels, external power status, and sampling and recording status are shown on the LCD.

Available on-screen data includes: statistics (min, max, average) for both channels; recording status (start, stop and recording rate); display options (channels shown, units, text size); and calibration information (date calibrated, date for recalibration). Statistics can be cleared at any time during logging.

With 131,071 readings per channel, the OM-CP-RHTEMP2000 has one of the largest memory capacities of any similar data recorder on the market. The non-volatile memory will retain recorded data, even if AC and battery power are lost.

The OM-CP-RHTEMP2000 runs on a 9V battery with a typical battery life of 1 year, at a 1 minute reading rate with the display off. With continuous LCD and no backlight usage, the average battery life is 30 days. For power savings, both the LCD and backlight have configurable auto-off options.

Those wanting to keep the LCD display and backlight continuously active need only to connect the unit to an AC power supply, keeping the 9V battery connected as a back-up.

NIST traceable calibration is available for users needing to meet regulatory requirements.

Creating permanent records, performing data calculations, and the graphing of data is quick and easy: Simply connect the interface cable to an available USB or serial port and, with a few clicks of the mouse, data is downloaded and ready for review or export to Excel.

Specifications

TEMPERATURE

Range: -20 to 60°C

(-4 to 140°F)

Resolution: 0.1°C

Calibrated Accuracy:
±0.5°C (0 to 50°C)

HUMIDITY

Range: 0 to 95% RH

Resolution: 0.1% RH

Calibrated Accuracy: ±3% RH
(±2% RH typical at 25°C)

Specified Accuracy Range:
10 to 40°C, 10 to 80% RH

DOT-MATRIX LCD

Dimensions: 63 x 35 mm
(2.5 x 1.375")

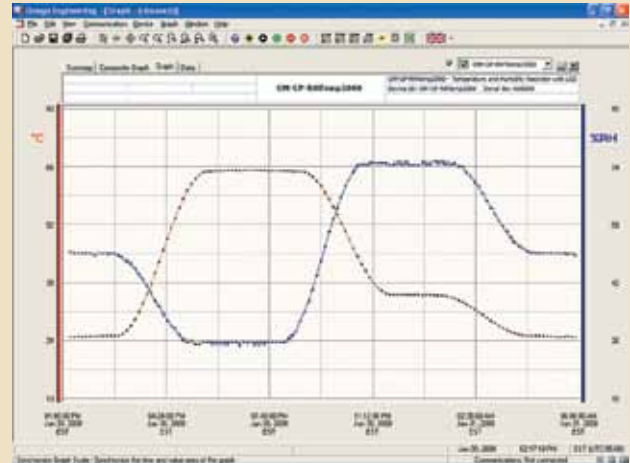
Text: Configurable channel text size

Indicators: Power, status, memory

Backlight: Configurable with auto shut-off and contrast adjustment



OM-CP-RHTEMP2000 data logger shown larger than actual size.



OM-CP-IFC200 Windows software, displays data in graphical or tabular format

Start/Stop Time: Software programmable start time and date, up to six months in advance; programmable stop time

Memory: 131,071 readings per channel; 262,142 total readings; software configurable memory wrap

Reading Rate: 1 reading every 2 seconds to 1 every 24 hours

Calibration: Digital calibration through software

Calibration Date: Automatically recorded within device

Battery Type: 9V lithium battery included, user replaceable; optional AC adaptor

Battery Life: 1 year battery life at 1 min reading rate with display off. 30 days typical with continuous LCD and no backlight usage.

Unit Display: Date and time stamped °C, °F, K, °R; %RH, mg/ml water vapor concentration, dew point

Time Accuracy: ±1 minute/month at 20 to 30°C (68 to 86°F)

Computer Interface: PC serial or USB (interface cable required); 115,200 baud

Software: XP SP3/Vista 7 and 8 (32- and 64-bit)

Operating Environment: -20 to 60°C (-4 to 140°F)
0 to 95% RH non-condensing

Dimensions: 122 L x 84 W x 32 D mm (4.8 x 3.3 x 1.25")

Weight: 440 g (16 oz)

Enclosure: Black anodized aluminum

To Order

Model No.	Description
OM-CP-RHTEMP2000	Humidity and temperature data logger with LCD display
OM-CP-RHTEMP2000-CERT	Humidity and temperature data logger with LCD display and NIST calibration certificate
OM-CP-IFC200	Windows software and 1.8 m (6') USB interface cable
OM-CP-SVP-SYSTEM	FDA 21 CFR part 11 compliant IQ/OQ/PQ secure software validation workbook and software package (unlimited users, license per computer)
OM-CP-BAT103	Replacement 9V lithium battery
OM-CP-110-PWR-2000	110 Vac power adaptor
OM-CP-220-PWR-2000	220 Vac power adaptor

Comes complete with 9V lithium battery. Operator's manual and USB cable are included with the OM-CP-IFC200 (software is required to operate the data logger and is sold separately).

Ordering Example: OM-CP-RHTEMP2000-CERT humidity and temperature data logger with NIST calibration certificate, OM-CP-IFC200 Windows software.