

Rugged, Submersible Thermocouple Recorder Part of the NOMAD® Family

OM-CP-TCTEMP1000



- ✓ Rugged and Submersible
- ✓ Real-Time Operation
- ✓ Dual Channel Ambient and Remote Temperature
- ✓ Automatically Converts Your PC Into a Strip Chart Recorder
- ✓ Automatic Thermocouple Linearization
- ✓ Memory Wrap Around
- ✓ Programmable Start Time

The OM-CP-TCTEMP1000 is a rugged, waterproof, battery powered, thermocouple based temperature recorder. This is a stand-alone, compact, portable, easy to use device that will measure and record up to 16,383 measurements per channel. The storage medium is non-volatile solid state memory, providing maximum data security even if the battery becomes discharged. Its real time clock ensures that all the data is time and date stamped. The device can be started and stopped directly from your computer and its small size allows it to fit almost anywhere. The OM-CP-TCTEMP1000 makes data retrieval quick and easy even from harsh environments. Simply plug it into an available COM port and our user-friendly software does the rest. The Windows software converts your PC into a real time strip chart recorder. Data can be printed in graphical or tabular format and can also be exported to a text or Microsoft Excel file.

Specifications

Internal Channel

Temperature Range:

-40 to 80°C (-40 to 176°F)

Temperature Resolution: 0.1°C

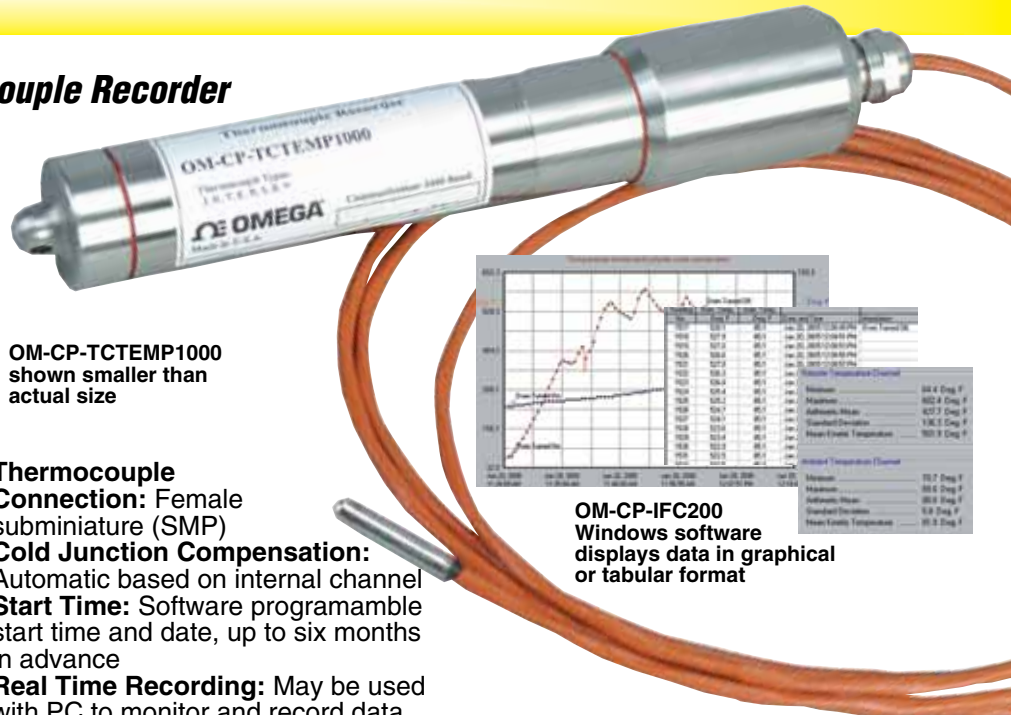
Temperature Accuracy:

±0.5°C (0 to 50°C)

Remote Channel Thermocouple

Types: J, K, T, E, R, S, B, N

(36" Type K T/C supplied with unit), other T/C's available, contact the Data Acquisition Department



OM-CP-TCTEMP1000 shown smaller than actual size

Thermocouple

Connection: Female subminiature (SMP)

Cold Junction Compensation:

Automatic based on internal channel
Start Time: Software programmable start time and date, up to six months in advance

Real Time Recording: May be used with PC to monitor and record data in real time

Memory: 16,383 readings per channel

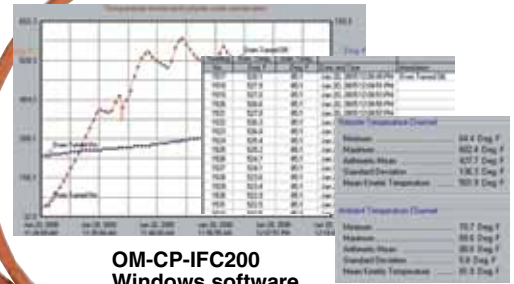
Reading Interval: 1 reading every 2 seconds to 1 every 12 hours

Calibration Date: Digital calibration through software

Data Format: Date and time stamped, °C, °F, K, °R, mV

Time Accuracy: ±1 minute/month at 20°C, RS-232 port not in use

Computer Interface: PC serial or USB (interface cable required) 2400 baud



OM-CP-IFC200 Windows software displays data in graphical or tabular format

Power: 3.6V lithium battery (included)

Battery Life: 1 year typical (1 minute reading rate @ 25°C)

Software: XP SP3/Vista/7 and 8 (32-bit and 64-bit)

Operating Environment:

-40 to 80°C (-40 to 176°F) 0 to 100% RH non-condensing

Submersible: Up to 45 m (150')

Dimensions: 31 mm dia x 188 mm L (1.2 x 7.4")

Weight: 380 g (13 oz)

T/C	Range (°C)	Resolution	Accuracy
J	-210 to 760	0.1°C	±0.5°C
K	-270 to 1370	0.1°C	±0.5°C
T	-270 to 400	0.1°C	±0.5°C
E	-270 to 980	0.1°C	±0.5°C
R	-50 to 1760	0.5°C	±2.0°C
S	-50 to 1760	0.5°C	±2.0°C
B	+50 to 1820	0.5°C	±2.0°C
N	-270 to 1300	0.1°C	±0.5°C

To Order

Model No.	Description
OM-CP-TCTEMP1000	Rugged thermocouple recorder
OM-CP-TCTEMP1000-CERT	Rugged thermocouple recorder with NIST calibration certificate
OM-CP-IFC200	Windows software and 1.8 m (6') USB interface cable
OM-CP-SVP-SYSTEM	FDA 21 part 11 compliant IQ/OQ/PQ secure software validation workbook and software package (unlimited users, license per computer)
OM-CP-BAT102	Replacement 3.6V lithium battery

Comes complete with 3.6V lithium battery. Operator's manual is included with the OM-CP-IFC200 Windows software and USB interface cable (software is required to operate the data logger and is sold separately).

Ordering Example: OM-CP-TCTEMP1000-CERT rugged thermocouple recorder with NIST calibration certificate and OM-CP-IFC200 Windows software.