

# COMWATCH-2000

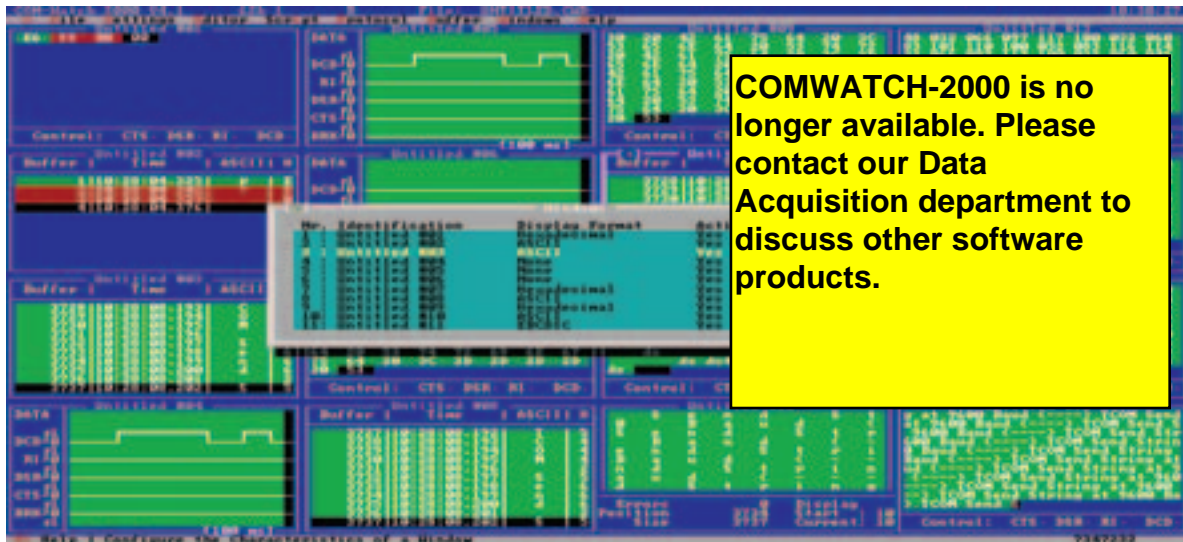
## Universal Communication Analyzer



IBM PC



SERIAL I/O



**\$329**  
Basic Unit

COMWATCH-2000 Universal Communication Analyzer enables the user to visualize and analyze data communication for different serial interface types like RS-232C and RS-422/ RS-485. COMWATCH-2000 is used to start-up, debug and service communication links in industrial, laboratory and telecommunication environments, as well as in software development. COMWATCH-2000 can actively communicate with a device, in order to test the data coming from the unit. The Script Command Language can be used to write simple to sophisticated testing programs. In Passive Monitoring Mode, Trigger Functions can determine which data should be monitored. The serial data can be analyzed in many ways, during and after capturing. This will enable the user to easily detect the cause of communication problems. COMWATCH-2000 only requires an IBM compatible 386 PC with a minimum of 4 MB of hard disk space and 4 MB of RAM. The software is fully mouse controlled.

### Data Storage

COMWATCH-2000 exploits a large data buffer (up to 10MB), in either standard or auto-wrapping mode.

When the system memory is not large enough, COMWATCH-2000 can stream the data to the hard drive. Save, Export and Print functions allows the user to utilize the information again in various applications.

### Active Testing Mode

COMWATCH-2000 can be used in the active mode to directly communicate with another device. This includes sending, capturing and playing back data streams.

### Passive Monitoring Mode

COMWATCH-2000 can be used in the passive mode to monitor the communication between other devices, without interfering with the communication. A special adapter box is supplied for this purpose.

### Multiple Analyze Functions

Many commands are available when the data is captured. Next to the display modes, various search, calculation and statistic functions are provided to serve the user. Statistics include average event size and the error and trigger ratios.

### Multiple Display Formats

The acquired data can be shown in a wide variety of modes and formats to fit any need: ASCII, Hexadecimal, Decimal, Octal, Mnemonic, EBCDIC and even a User Defined format.

### Powerful Trigger Functions

Using the triggers, complex conditions can be created to view only the data you are interested in. Pre-and post triggers as well as file modes are available. Conditions can consist of signal status, data pattern, time and/or date.

### Time Stamping

COMWATCH 2000 has the ability to add a time stamp to all events, with a resolution of 1ms. You can choose to add "time only", "time and date" or "relative" stamps.

### Playback Feature

Resend data you have captured earlier, with preservation of time delays. In combination with the possibility to edit events, this is an excellent way to test devices against faulty messages.

### Script Command Language

The C-like script language allows you to build simple or very powerful applications for interactive or unattended testing. Scripts can also be used to interpret simple protocols.

### Windows Compatible

COMWATCH 2000 is compatible with all versions of Windows 3.x and Windows 95. (However, it is a DOS program).

### Additional Features

- Flexible user interface with full mouse support
- Diagnostic mode (like a hardware break-out box)
- Synchronization of view ports
- Statistical information
- Auto detection of hardware
- Context sensitive hypertext help
- Shell to DOS
- Integrated editor and viewer
- Support for VESA hi-resolution text modes

<b>To Order (Specify Model Number)</b>		
<b>Model Number</b>	<b>Price</b>	<b>Description</b>
<b>SWD-COMWATCH-2000</b>	<b>\$329</b>	COM-Watch 2000 V5.1 for RS-232C: Dacom analyzer for RS-232C. Active communication with device and passive monitoring of data communication between devices. RS-232C adapter plus cables and RS-232C driver. Requires two RS232-ports for passive mode. Manual and software (DOS) included.
<b>SWD-CWOPTWINE</b>	<b>249</b>	COM-Watch 2000 Windows Analyzer Option: This Windows Analyzer Option makes it possible to visualize and analyze COM-Watch 2000 data files in the graphical, multithreaded environment of Microsoft Windows. Includes software (Windows 95/98/NT2000) and manual.
<b>SWD-CWOPT232S2</b>	<b>189</b>	COM-Watch 2 PORT RS-232C Plug-in: Driver which enables COM-Watch to monitor two additional RS-232C (total of four RS-232C) serial communication channels. One RS-232C adapter is included. Requires one serial port per data channel. Manual and software included.
<b>SWD-CWOPT232S4</b>	<b>349</b>	COM-Watch 4 PORT RS-232C Plug-in: Driver which enables COM-Watch to monitor four additional RS-232C (total of six RS-232C) serial communication channels. Requires one serial port per data channel. Two RS-232C adapter are included. Manual and software included.
<b>SWD-CWOPT232X2</b>	<b>229</b>	COM-Watch 2 PORT RS-232C Plug-in: Driver which enables COM-Watch to monitor two additional RS-232C (total of four RS-232C) serial communication channels. One RS-232C adapter is included as well as a two port serial communication board (ISA). Manual and software included.
<b>SWD-CWOPT232X4</b>	<b>389</b>	COM-Watch 4 PORT RS-232C Plug-in: Driver which enables COM-Watch to monitor four additional RS-232C (total of six RS-232C) serial communication channels. Two RS-232C adapters are included as well as a four port serial communication board (ISA). Manual and software included.
<b>SWD-CWOPT232X8</b>	<b>639</b>	COM-Watch 8 PORT RS-232C Plug-in: Driver which enables COM-Watch to monitor eight additional RS-232C (total of ten RS-232C) serial communication channels. Four RS-232C adapters are included as well as a eight port serial communication board (ISA). Manual and software included.
<b>SWD-CWOPT232LX/E</b>	<b>369</b>	COM-Watch PCMCIA RS-232C Plug-in: Driver which enables COM-Watch to monitor two additional RS-232C channels on your portable PC. Comes with a PCMCIA Type II dual port communication card as well as a COM-Watch RS-232C adapter. Manual and software included.
<b>SWD-CWOPT485S</b>	<b>199</b>	COM-Watch RS422/RS-485 Plug In: Driver which enables COM-Watch to monitor two RS-422/RS-485 channels. Comes with RS-422/RS-485 adapter. Software and manual are included. RS-422/RS-485 serial communication board NOT INCLUDED.
<b>SWD-CWOPT485X</b>	<b>239</b>	COM-Watch RS422/RS-485 Plug-in with serial communication board: Same as CWOPT485S/E, but RS-422/RS-485 serial communication board (ISA) is INCLUDED.
<b>SWD-CWOPTCANX/E</b>	<b>1269</b>	COM-Watch CAN Analyzer Plug-in: Driver which turns COM-Watch into a powerful CAN Analyzer. A total of two CAN networks can be analyzed. Comes with adapter and CAN interface board (ISA). Includes manual and software.
<b>SWD-CWOPTCANLX/E</b>	<b>1549</b>	COM-Watch PCMCIA CAN Analyzer Plug-in: Driver which enables COM-Watch to monitor two independent CANV2.0a serial communication channels on your portable PC. Comes with a PCMCIA Type II Dual port communication card as well as COM-Watch CAN adapter. Includes manual and software.
<b>SWD-CWOPTBRILX/E</b>	<b>1569</b>	COM-Watch PCMCIA ISDN-2 Analyzer Plug-In: Driver which enables COM-Watch 2000 to monitor ISDN Basic Rate communication lines (SO-bus, 2XB, 1XD bi-directional) on your portable PC. Comes with two port PCMCIA Type ISDN-2 card as well as COM-Watch ISDN-2 adapter.
<b>SWD-CWOPTLPT/E</b>	<b>59</b>	COM-Watch LPT Plug-in: Driver which turns COM-Watch into a LPT/logic analyzer. Includes software and manual.



#### UNITED STATES

[www.omega.com](http://www.omega.com)  
1-800-TC-OMEGA  
Stamford, CT.

#### CANADA

[www.omega.ca](http://www.omega.ca)  
Laval(Quebec)  
1-800-TC-OMEGA

#### GERMANY

[www.omega.de](http://www.omega.de)  
Deckenpfronn, Germany  
0800-8266342

#### UNITED KINGDOM

[www.omega.co.uk](http://www.omega.co.uk)  
Manchester, England  
0800-488-488

#### FRANCE

[www.omega.fr](http://www.omega.fr)  
Guyancourt, France  
088-466-342

#### CZECH REPUBLIC

[www.omegaeng.cz](http://www.omegaeng.cz)  
Karviná, Czech Republic  
596-311-899

#### BENELUX

[www.omega.nl](http://www.omega.nl)  
Amstelveen, NL  
0800-099-33-44



## More than 100,000 Products Available!

### • Temperature

Calibrators, Connectors, General Test and Measurement Instruments, Glass Bulb Thermometers, Handheld Instruments for Temperature Measurement, Ice Point References, Indicating Labels, Crayons, Cements and Lacquers, Infrared Temperature Measurement Instruments, Recorders Relative Humidity Measurement Instruments, RTD Probes, Elements and Assemblies, Temperature & Process Meters, Timers and Counters, Temperature and Process Controllers and Power Switching Devices, Thermistor Elements, Probes and Assemblies, Thermocouples Thermowells and Head and Well Assemblies, Transmitters, Wire

### • Flow and Level

Air Velocity Indicators, Doppler Flowmeters, Level Measurement, Magnetic Flowmeters, Mass Flowmeters, Pitot Tubes, Pumps, Rotameters, Turbine and Paddle Wheel Flowmeters, Ultrasonic Flowmeters, Valves, Variable Area Flowmeters, Vortex Shedding Flowmeters

### • pH and Conductivity

Conductivity Instrumentation, Dissolved Oxygen Instrumentation, Environmental Instrumentation, pH Electrodes and Instruments, Water and Soil Analysis Instrumentation

### • Data Acquisition

Auto-Dialers and Alarm Monitoring Systems, Communication Products and Converters, Data Acquisition and Analysis Software, Data Loggers Plug-in Cards, Signal Conditioners, USB, RS232, RS485 and Parallel Port Data Acquisition Systems, Wireless Transmitters and Receivers

### • Pressure, Strain and Force

Displacement Transducers, Dynamic Measurement Force Sensors, Instrumentation for Pressure and Strain Measurements, Load Cells, Pressure Gauges, Pressure Reference Section, Pressure Switches, Pressure Transducers, Proximity Transducers, Regulators, Strain Gages, Torque Transducers, Valves

### • Heaters

Band Heaters, Cartridge Heaters, Circulation Heaters, Comfort Heaters, Controllers, Meters and Switching Devices, Flexible Heaters, General Test and Measurement Instruments, Heater Hook-up Wire, Heating Cable Systems, Immersion Heaters, Process Air and Duct, Heaters, Radiant Heaters, Strip Heaters, Tubular Heaters