

THERMAL FLOW SWITCHES

FSW-420/30 Series



- ✓ Automatic Scaling and Setpoint
- ✓ No Moving Parts
- ✓ Pushbutton Re-Scaling if Needed
- ✓ Easy to Install

The FSW-420/30 Series monitors your relative flow rate for applications where the actual flow rate is not important. The FSW-420/30 series is easy to install and use. Just put it into the pipe and it's ready to go. The FSW-420/30 series sets your present flow-rate at 100% at power up. Relative flow rate is indicated by the 7 LED lights. When the flow rate drops to 50%, an alarm goes off. If you prefer, you can adjust the alarm point to fit your needs. A green output indicating LED is also included.

SPECIFICATIONS

Media: Liquids
Low Flow Setpoint: Pre-set to 50% (field adjustable)
Operating Temperature: -20 to 80°C (-4 to 176°F)
Response Time: 25 sec (typical)
Repeatability: 1%
Hysteresis: 10% of setpoint value typical
Range:
FSW-420 Series: 0 to 150 cm/sec
FSW-431: 0 to 2.25 L/min
FSW-432: 0 to 5.1 L/min
FSW-433: 0 to 14.1 L/min
Operating Pressure: 30 Bar (450 psi)
Protection Class: NEMA 6 (IP67)
Housing: Anodized aluminum
Sensor Material: 303 stainless steel
Tube Housing (FSW-430 Series): Polyacetal
Mounting (FSW-420 Series): ½ NPT
Connection Tube OD:
FSW-431: 6 mm (0.24")
FSW-432: 8 mm (0.31")
FSW-433: 12 mm (0.47")

Electrical Connection: M12 male socket 4-pin, 2 m (6.5') cable with M12 connector and pigtail leads
Supply Voltage: 20 to 30 Vdc (short circuit protected)
Switching Current: <200 mA

FSW-422 insertion style switch.



Shown smaller than actual size.

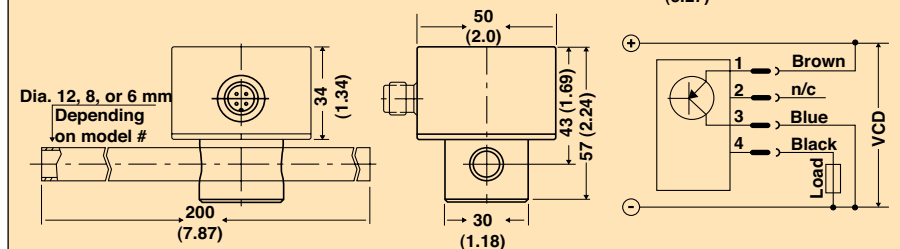
FSW-433 in-line switch.



Power Consumption: 6 W maximum
Initial Operation: 15 seconds
Output: Standard PNP normally open (closed with flow), optional normally closed (open with flow)

Model	X
FSW-421	12.5
FSW-422	50.5

Dimensions: mm (inch)



To Order

Model No.	Description
FSW-421	Insertion flow switch, standard length
FSW-422	Insertion flow switch, extended length
FSW-431	In-line flow switch, 6 mm (0.24") tube
FSW-432	In-line flow switch, 8 mm (0.31") tube
FSW-433	In-line flow switch, 12 mm (0.47") tube

For units with BSP threads, add "-BSP" to model number, no additional charge.

Accessories

Model No.	Description
FSW-400-CABLE-2M	Replacement connection cable 2 m (6.5')
FSW-400-CABLE-4M	Replacement connection cable 4 m (13')
70A-1	Audible alarm
PSU-93	Power supply

Comes complete with 2 m (6.5') pre-wired cable and operator's manual.

Standard valves are normally open. For optional normally closed valves, add "-NC" to model number, no additional charge.

Ordering Examples: FSW-431, flow switch and mating connector, 6 mm (0.24") and PSU-93 power supply, 70A-1 audible alarm.

FSW-421, insertion flow switch and PSU-93, unregulated 24 Vdc power supply.