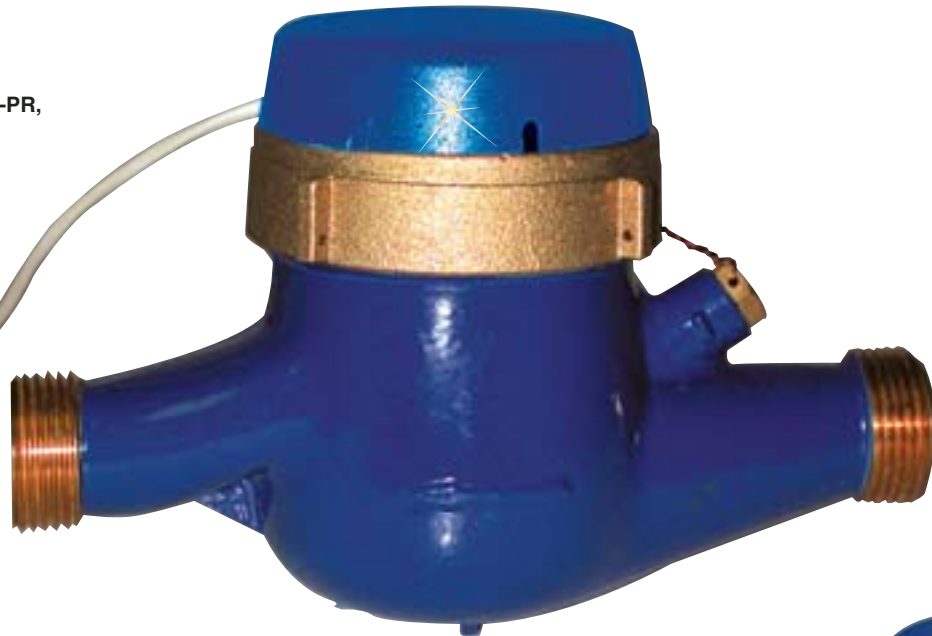
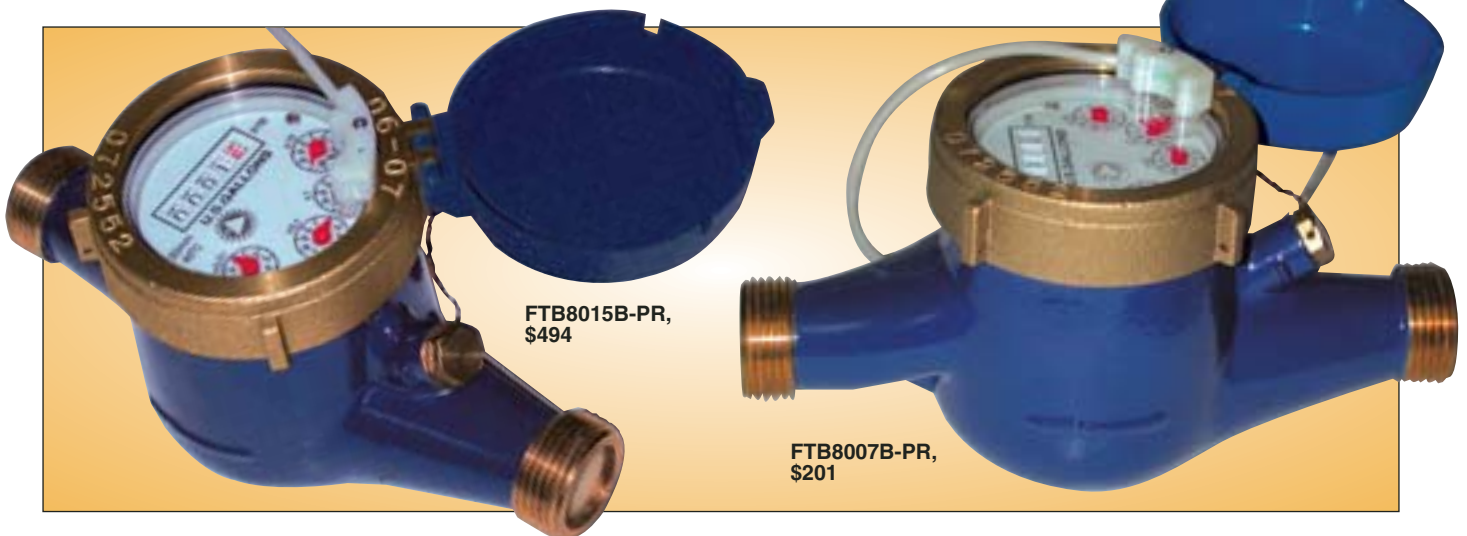


WATER METERS FOR TOTALIZATION AND RATE INDICATION WITH PULSE OUTPUT

FTB8015B-PR,
\$494



All models shown smaller than actual size.



FTB8015B-PR,
\$494

FTB8007B-PR,
\$201

FTB8000B Series
Starts at

\$171

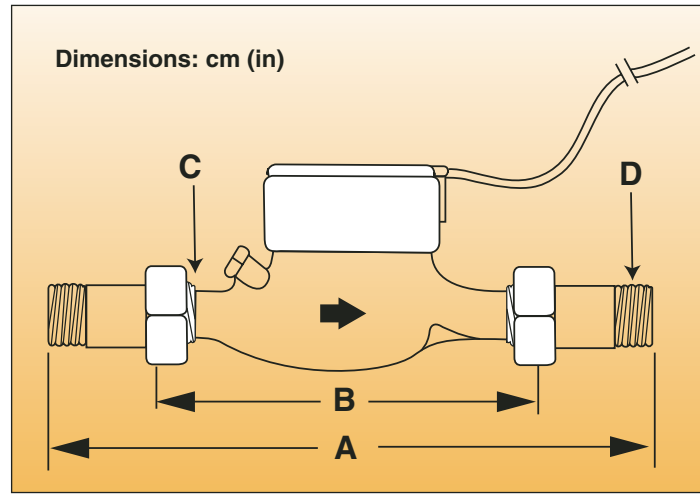
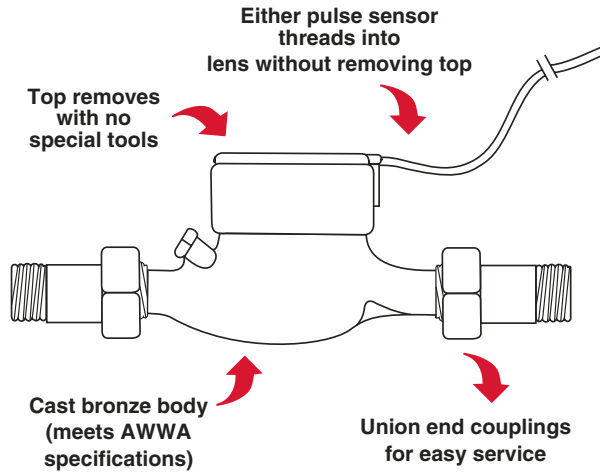


- ✓ Flow Rates from 0.22 to 132 GPM
- ✓ 150 psi Maximum Operating Pressure
- ✓ 40°C (105°F) Maximum Operating Temperature
- ✓ Field-Adjustable Pulse Output (Optional)

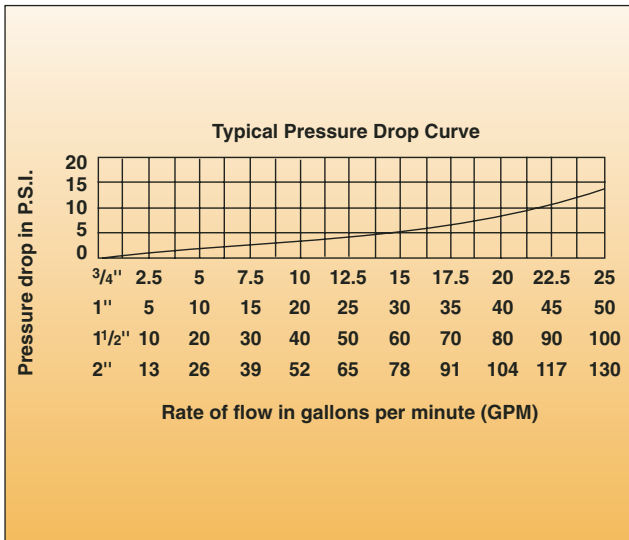
The FTB8000B Series meters use the multi-jet principle, which has been an internationally accepted standard for many years. This type of meter is known for its wide range, simplicity, and accuracy in low-quality water. The impeller is centered in a ring of jets, with inlet jets on one level and outlet jets on another. A gear train drives the register totalizer dials. For pulse output, one of the dials is replaced by a gear, which turns a magnet that is detected by an encapsulated sensor threaded into the outside of the lens. Pulse rate is determined by the gear and the dial on which

the gear is placed. Changing the pulse rate requires no special tools and can be done in the field.

Mechanically, all FTB8000B meters are the same. The difference between the -PR, -PT, and standard models is in the sensor. -PR model meters use a solid state, long-lasting Hall-effect sensor, which requires power. -PT model meters use a 2-wire reed switch. They provide a dry-contact closure and do not require power. Basic FTB8000B meters totalize only and do not have an output. Never install water meters above or over areas where leakage would cause damage.



NPT Size	¾	1	1½	2
A (Body)	19 (7½)	26 (10¼)	30 (11¼)	30 (11¼)
B (w/Couplings)	32 (12½)	40 (15½)	45 (17½)	45 (17½)
C (BSP Thread)	2.5 (1)	3 (1¼)	5 (2)	6 (2½)
D (NPT Thread)	1.9 (¾)	2.5 (1)	3.8 (1½)	5 (2)



NPT Size	¾	1	1½	2
Pulses per Gallon	20*	—	—	—
	10	—	—	—
	2*	2*	2*	2*
Gallons per Pulse	1	1	1	1
	5*	5*	5*	5*
	10	10	10	10
	50*	50*	50*	50*
	100	100	100	100

*These pulse rates are only available on units with the "-PT" option.

SPECIFICATIONS

Materials:

Case: Cast bronze

Internals: Engineered thermoplastic

Magnet: Permanent ceramic

Temperature: 40°C (105°F)

Max Operating Pressure: 150 psi

Accuracy: 1½% of reading

Sensor:

-PR: Hall-effective device

-PT: Reed switch

Max Current:

-PR: 20 mA

-PT: 50 mA

Max. Voltage:

-PR: 24 Vdc

-PT: 24 Vdc or Vac

Sensor Power (-PR):

Minimum 6 mA at 12 Vdc

Cable Length: 4 m (12') standard,

600 m (2000') max

Flow Rates (GPM):

NPT Size	¾	1	1½	2
Minimum	0.22	0.44	0.88	1.98
Maximum	22	52	88	132

MOST POPULAR MODELS HIGHLIGHTED!

To Order (Specify Model Number)

Model No.	Price	NPT Size	Flow Range (GPM)	Pulses per Gallon (Default Setting)
FTB8007B	\$171	¾	0.22 to 22	None
FTB8010B	281	1	0.44 to 52	None
FTB8015B	471	1½	0.88 to 88	None
FTB8020B	591	2	1.98 to 132	None
FTB8007B-PT	201	¾	0.22 to 22	20
FTB8010B-PT	281	1	0.44 to 52	1
FTB8015B-PT	494	1½	0.88 to 88	1
FTB8020B-PT	619	2	1.98 to 132	1
FTB8007B-PR	201	¾	0.22 to 22	1
FTB8010B-PR	281	1	0.44 to 52	1
FTB8015B-PR	494	1½	0.88 to 88	1
FTB8020B-PR	619	2	1.98 to 132	1
ES-2022	140	Reference Book: Water Resources Handbook		

Comes with MNPT couplings and complete operator's manual.

Ordering Examples: FTB8015B-PR, 88 GPM max flow rate water meter with adjustable pulse output set to 1 pulse per gallon, \$494. FTB8010B-PR, 52 GPM max with adjustable pulse output set to 1 pulse per gallon, \$281.



UNITED STATES

www.omega.com
1-800-TC-OMEGA
Stamford, CT.

CANADA

www.omega.ca
Laval(Quebec)
1-800-TC-OMEGA

GERMANY

www.omega.de
Deckenpfronn, Germany
0800-8266342

UNITED KINGDOM

www.omega.co.uk
Manchester, England
0800-488-488

FRANCE

www.omega.fr
Guyancourt, France
088-466-342

CZECH REPUBLIC

www.omegaeng.cz
Karviná, Czech Republic
596-311-899

BENELUX

www.omega.nl
Amstelveen, NL
0800-099-33-44



More than 100,000 Products Available!

• Temperature

Calibrators, Connectors, General Test and Measurement Instruments, Glass Bulb Thermometers, Handheld Instruments for Temperature Measurement, Ice Point References, Indicating Labels, Crayons, Cements and Lacquers, Infrared Temperature Measurement Instruments, Recorders Relative Humidity Measurement Instruments, RTD Probes, Elements and Assemblies, Temperature & Process Meters, Timers and Counters, Temperature and Process Controllers and Power Switching Devices, Thermistor Elements, Probes and Assemblies, Thermocouples Thermowells and Head and Well Assemblies, Transmitters, Wire

• Flow and Level

Air Velocity Indicators, Doppler Flowmeters, Level Measurement, Magnetic Flowmeters, Mass Flowmeters, Pitot Tubes, Pumps, Rotameters, Turbine and Paddle Wheel Flowmeters, Ultrasonic Flowmeters, Valves, Variable Area Flowmeters, Vortex Shedding Flowmeters

• pH and Conductivity

Conductivity Instrumentation, Dissolved Oxygen Instrumentation, Environmental Instrumentation, pH Electrodes and Instruments, Water and Soil Analysis Instrumentation

• Data Acquisition

Auto-Dialers and Alarm Monitoring Systems, Communication Products and Converters, Data Acquisition and Analysis Software, Data Loggers Plug-in Cards, Signal Conditioners, USB, RS232, RS485 and Parallel Port Data Acquisition Systems, Wireless Transmitters and Receivers

• Pressure, Strain and Force

Displacement Transducers, Dynamic Measurement Force Sensors, Instrumentation for Pressure and Strain Measurements, Load Cells, Pressure Gauges, Pressure Reference Section, Pressure Switches, Pressure Transducers, Proximity Transducers, Regulators, Strain Gages, Torque Transducers, Valves

• Heaters

Band Heaters, Cartridge Heaters, Circulation Heaters, Comfort Heaters, Controllers, Meters and Switching Devices, Flexible Heaters, General Test and Measurement Instruments, Heater Hook-up Wire, Heating Cable Systems, Immersion Heaters, Process Air and Duct, Heaters, Radiant Heaters, Strip Heaters, Tubular Heaters