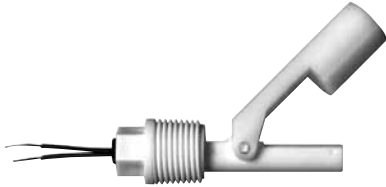


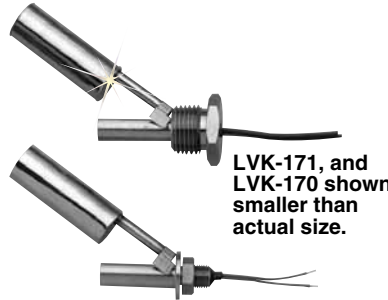
SIDE MOUNTED LIQUID LEVEL CONTROLS

Ideal For Tight Spaces

LVK-160



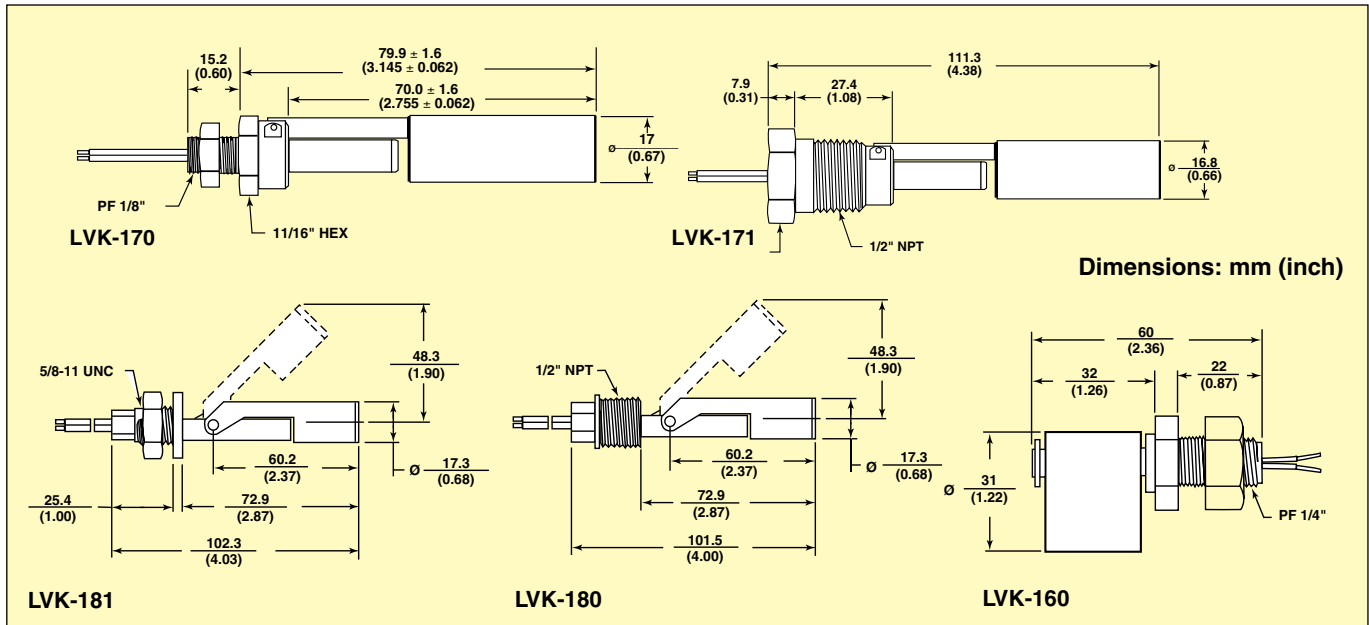
LVK-180 shown smaller than actual size.



LVK-171, and LVK-170 shown smaller than actual size.



LVK-160 shown smaller than actual size.



- ✓ Low Cost, Large Volume OEM Models
- ✓ Easy to Install and Maintain
- ✓ Internal and External Mounting Available
- ✓ Precise Repeatability
- ✓ Highly Chemical Resistant
- ✓ Minimal Float Travel and Displacement

The LVK-180 series requires side mounting into vessels and is designed to provide maximum reliability. Models are available with polypropylene float material. These versatile level sensors feature switches that can be mounted for either normally open or normally closed. For high pressure applications, these switches are constructed of 316SS.

SPECIFICATIONS

Mounting:

*PF 1/4" for LVK-160; 5/8-28 UNF for LVK-170; 1/2" NPT for LVK-171 and LVK-180; 5/8"-11 UNC for LVK-181

Switch: SPST for LVK-160;

SPDT for LVK-170, and LVK-180

Lead Wires:

22 AWG, 60.9 cm (24") long

Compact, rugged and virtually maintenance free, the LVK-160 series can effectively meet the needs of large volume OEM users. The sensor is designed for side mounting into tanks that have restricted space or inaccessible tops or bottoms. Construction is polypropylene for compatibility with a wide range of chemicals. Magnetic SPST switch operation is normally open (dry) when units are installed with float downward, or normally closed (dry) when with float upward.

To Order

| Model No. | Switch Rating | Stem/Float | Temp. Range | Max. Press | Liquid Spec. Gravity |
|--------------------|---------------|---------------|-------------------------------|---------------------------|----------------------|
| LVK-160 | 20 VA | Polypropylene | -40 to 80°C -40 to 176°F | 40 psi @ 70°F | 0.80 |
| LVK-170 LVK-171 | 20 VA | 304 & 316SS | -40 to 149°C -40 to 300°F | 400 psi @ 300°F @ 70°F | 0.58 |
| LVK-180 LVK-181 | 20 VA | Polypropylene | -40 to 65.5°C -40 to 150°F | 100 psi @ 70°F | 0.65 |

Comes complete with operator's manual.

* = Japanese metric

Ordering Example: LVK-171, liquid level 20 VA switch with 304SS stem and 316SS float.