

OMEGA-FLO® 3-WAY SOLENOID VALVES FOR PNEUMATICS

1/4 NPT

SV-1601A



- ✓ Ideal for Air Cylinders and Actuators
- ✓ Manual Override Standard
- ✓ 120 Vac Standard (DC Optional)
- ✓ Low Power Consumption

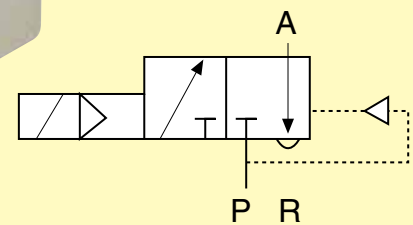
The SV-1600A Series 3-way solenoid valve is an internally piloted poppet valve featuring an epoxy-encapsulated coil, Buna-N seals, low power consumption, and a high cycle rate. It also has a high-quality plastic body with pressed-in threaded bushings and a built-in sintered bronze silencer in the relief port. Manual override is standard. Temperature range is -10 to 60°C (14 to 140°F).

This valve is ideal for compressed air to actuate medium-sized cylinders and actuators. Electrical connection is by conduit plug.



SV-1601A shown larger than actual size.

NORMALLY CLOSED



3-way normally closed, outlet A normally vented.

SPECIFICATIONS

Mounting Position: Any (relief port R with built-in sintered bronze silencer is in the base and must not be covered)
Max Ambient Temp: 54°C (130°F)
Voltage Tolerance: ±10%

Power Consumption in Warm State:

AC: 3.5 VA/2 W

DC: 2 W

Opening Time (ms): Approx. 50

Closing Time (ms): Approx. 30

Cycling Rate: Approx. 1000 cpm

Duty Cycle: Continuous (100%)

FM Approvals: Non-incendiary for hazardous locations Class I, Div. 2, Group A, B, C, D; Class II, Div. 2, Group F, G; Class III, Div. 1 and 2; Operating Temperature T4A

To Order

Model No.	Port Connection (NPT)	Cv	Pressure Range ¹ (psi)	Orifice Diameter	Valve Operation	Weight kg (lb)	Body Material
SV-1601A	1/4	0.97	15 to 140	1/4"	Normally closed	0.3 (0.66)	Plastic

¹Pressure differential of at least 15 psi is required to ensure operation.

Comes with complete operator's manual.

Ordering Example: SV-1601A, plastic valve, 0.97 Cv, normally closed operation.