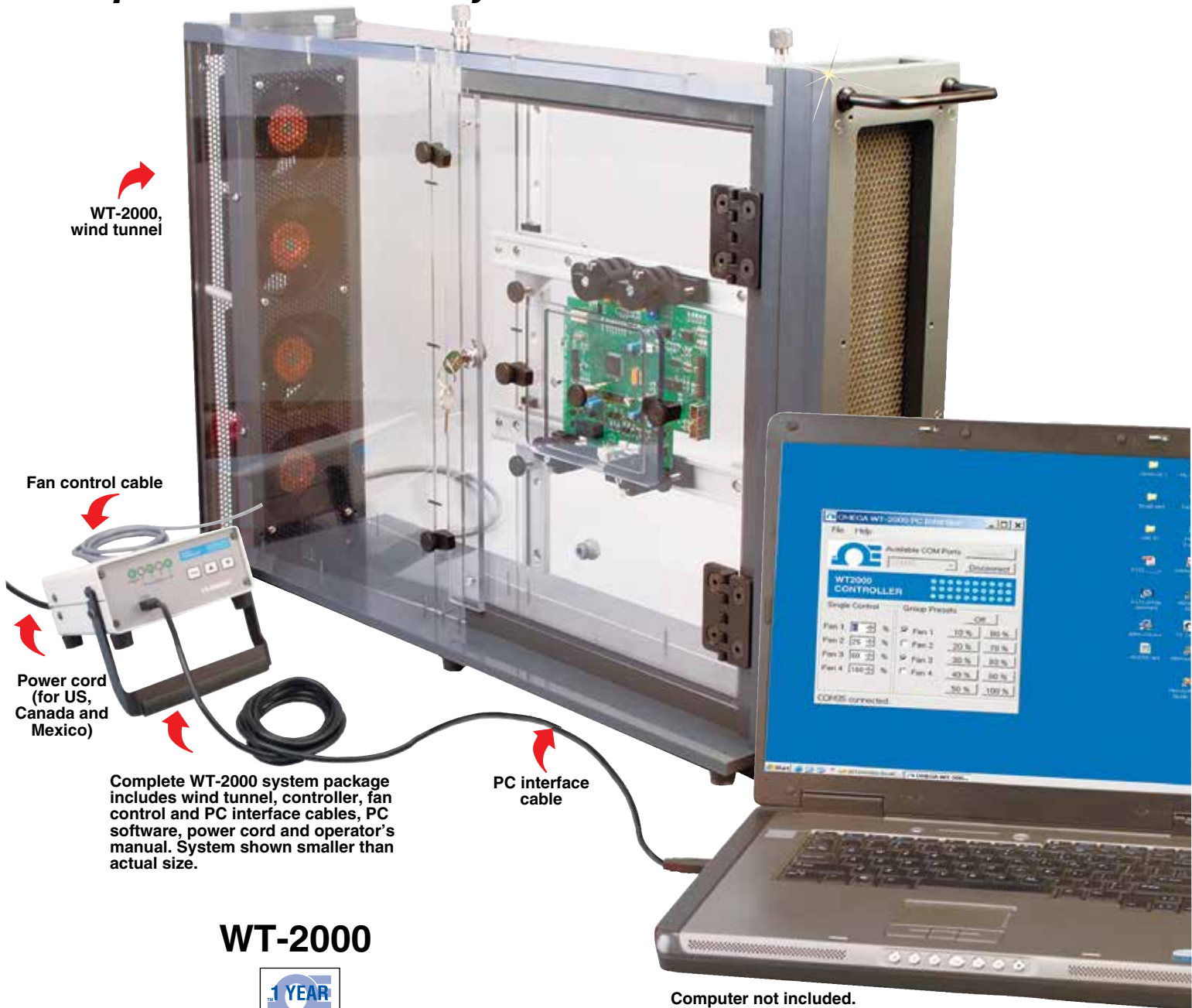


HIGH-PERFORMANCE WIND TUNNEL



**For Thermal Evaluation of Circuit Boards, Heat Sinks,
Components and Air Velocity Sensor Calibrations**



WT-2000,
wind tunnel

Fan control cable

Power cord
(for US,
Canada and
Mexico)

Complete WT-2000 system package includes wind tunnel, controller, fan control and PC interface cables, PC software, power cord and operator's manual. System shown smaller than actual size.

PC interface cable

WT-2000

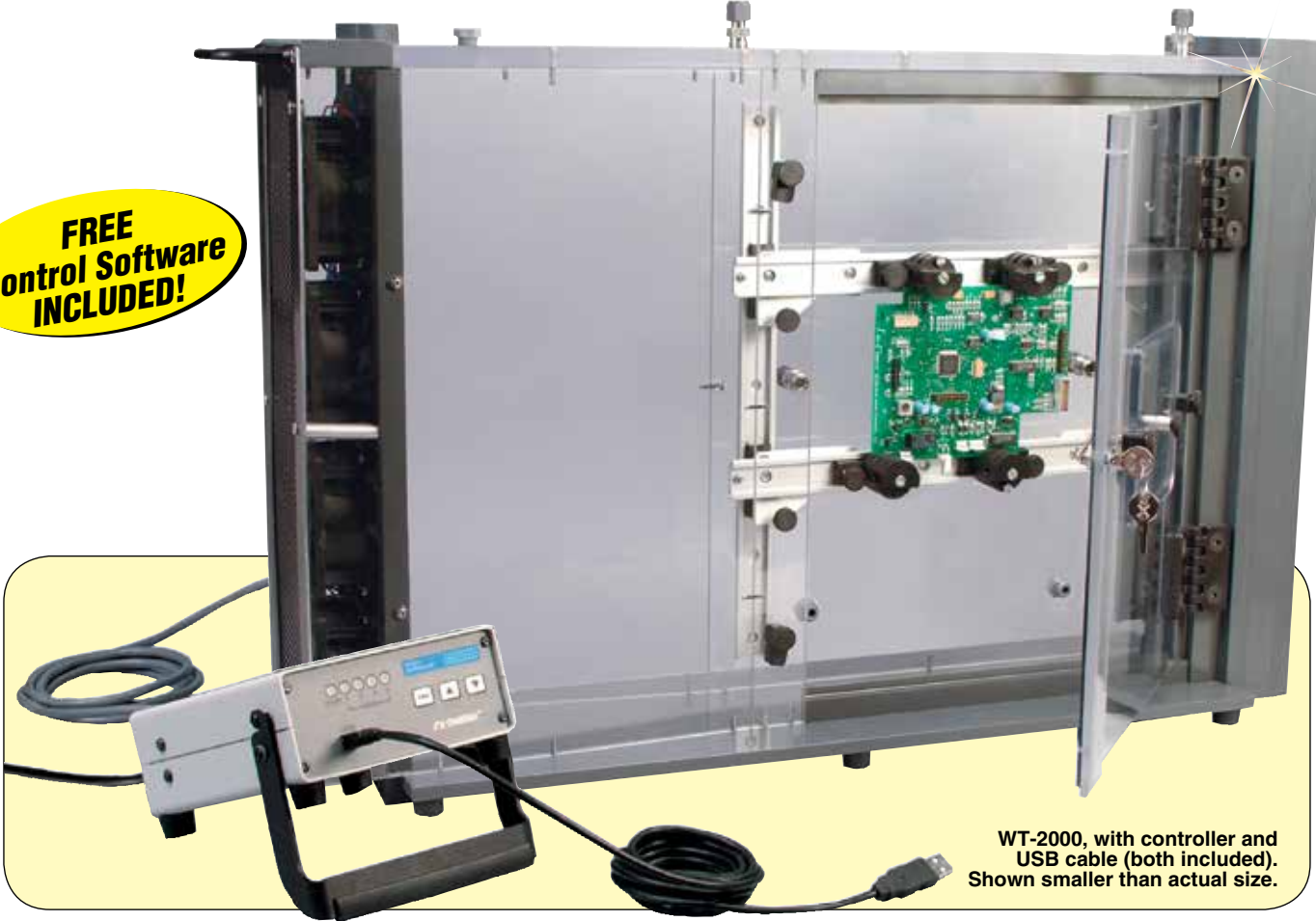


Computer not included.

- ✓ Portable Bench-Top Design
- ✓ Provides Highly Accurate, Uniform and Repeatable Air Flow up to 1000 fpm
- ✓ Included Control Box Allows for Open Loop Full Scale Operation of Individual Fans, Groups of 2 Fans, or All 4 Fans at a Time

- ✓ Free PC Based Open Loop Software Allows User to Precisely Control Air Flow Rate Using the Included USB Cable to Connect to the Control Box
- ✓ Large Test Chamber with a Hinged Access Door and Small Access Panel Allows for Fast Comparison Testing on Many Different Size Heat Sinks and Circuit Boards
- ✓ Operates from 90 to 264 Vac Line Power

**FREE
Control Software
INCLUDED!**



WT-2000, with controller and USB cable (both included). Shown smaller than actual size.

The thermal wind tunnel from OMEGA is designed to give a highly accurate and uniform flow rate. Four powerful DC fans are precisely controlled to provide variable air speeds from 0 to 1000 ft/min. The WT-2000 wind tunnel was designed to provide thermal characterization of circuit boards, heat sinks and components. The unit is made of clear polycarbonate and PVC for a durable and transparent assembly. The large test section is accessed by the large hinged door and accommodates a removable test plate, as well as a rail system that allows for a wide range of mounting options. In addition, there is a small access door that accommodates the quick changing of smaller components and the placement of sensors. Multiple access ports with ¼ and ½" compression fittings are provided on the top and rear panel of the wind tunnel for the routing of wires and insertion of sensors.

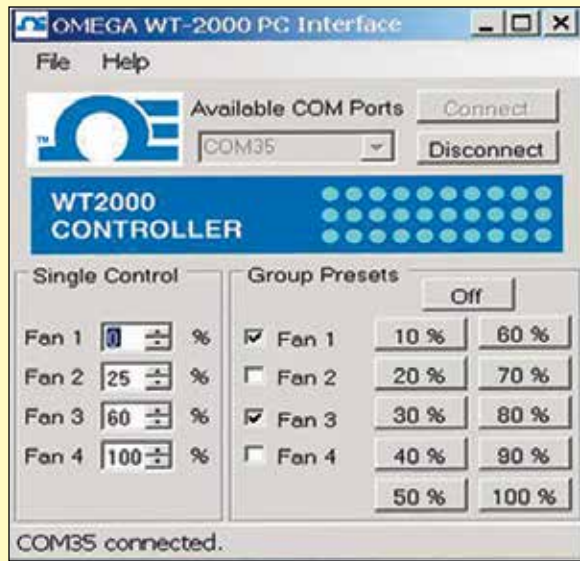
SPECIFICATIONS*

- Wind Tunnel**
- Flow Rate:** 0 to 5 m/s (0 to 1000 ft/min)
- Size:** 80.5 L x 18.4 W x 48.4 cm H (31.7 x 7.3 x 19.1")
- Weight:** 12.48 kg (27.5 lb)
- Test Chamber:** 43 x 8.25 cm cross section (17 x 3.25")
- Fan Speed:** 3800 RPM
- DC Fan Motor:** 12 Vdc @ 0.47A ea (5.6W ea) x 4
- Noise:** 61 dBA max, 1 meter away
- Electrical Control Box**
- Power:** 90 to 264 Vac @ 47 to 63 Hz
- Fuse:** 2A fast acting 5 x 20 mm cartridge type
- Size:** 16 L x 13.8 W x 6.7 cm H (6¼ x 47/16 x 211/16")
- Weight:** 0.9 kg (2 lb)

PC Interface: USB
Operating Temperature: 5 to 45°C (41 to 113°F)
Operating Relative Humidity: Less than 80% without condensation

** All specifications measurements at ambient room temperature of 22.2°C (70°F) with less than 80% relative humidity and 760 mm (29.92") of Hg barometric pressure.*

Open Loop Velocity Control: Allows for quick and simple modification of individual fan velocity using direct entry or directional arrows. (Requires Windows 2000®, XP, or Vista Operating System)



SA2C-K, self adhesive thermocouple, shown smaller than actual size. Visit omega for details.

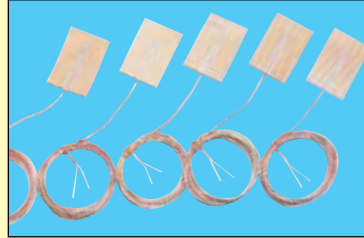
SA2F-K, self adhesive thermocouple, shown smaller than actual size.

Actual size.



ML4C labels, (10-pack), non-reusable OMEGALABEL™ temperature monitors. Visit omega for additional models and details.

Shown larger than actual size for detail.



SA1, self adhesive thermocouples, (5-pack), shown smaller than actual size. Visit omega for additional models and details.

SA1-RTD-B, RTD temperature sensors, 3-pack, shown smaller than actual size. Visit omega for details.

The TVS-1004 Series is Supplied With One Miniature Candlestick Sensor For Each Channel. Shown Smaller Than Actual Size.

To Order

Model No.	Description
WT-2000	Wind tunnel package

Comes complete with fully assembled wind tunnel test chamber, electronic control box controller fan control cable, PC interface cable, molded power cord (for US, Canada, and Mexico), operator's manual, and PC interface software CD.

Ordering Examples: WT-2000 wind tunnel package and SA1-K Type K self adhesive thermocouples with stripped ends (5-pack).

WT-2000 wind tunnel package and HHF42 hot wire anemometer.

Accessories

Model No.	Description
TVS-1004	Velocity and temperature measurement system (4 sensors)
HHF1001A	Handheld air velocity/temperature meter
FMA-902A-VI	General purpose air velocity transducer, 0 to 1000 SFPM (0 to 5 V output)
SA1-K	Type K self adhesive thermocouples with stripped ends (5-pack)
SA1-RTD-B	100Ω self adhesive RTD temperature sensors with stripped ends (3-pack)
SA2C-K	Type K, curved surface, molded silicon self adhesive thermocouple
SA2F-K	Type K, flat surface, molded silicon self adhesive thermocouple
ML4C-143-10	Non-reversible OMEGALABEL™ temperature monitors with temperature ratings of 143, 149, 154, and 160°C (10-pack)
POWER CORD-DM	Power cord (Denmark)
POWER CORD-E-10A	Power cord (Continental Europe)
POWER CORD-IT	Power cord (Italy and Ireland)
POWER CORD-UK	Power cord (United Kingdom)
POWER CORD-SE	Power cord for all countries (stripped ends) 250 Vac maximum

