

# PURE WATER, CORROSIVE SOLUTION AND HIGH TEMPERATURE GAS APPLICATIONS

## NWHMTSS, NWHIS and NWHOIS Series

- ✓ Screw Plug or Flanged Heater Design
- ✓ 3 - 14" Type 304 Stainless Steel Pipe Body, 150 Lb Construction
- ✓ 2 - 200 kW
- ✓ 120, 240 and 480V, 1 & 3 Phase
- ✓ General Purpose, Moisture Resistant/Explosion Resistant, Explosion Resistant or Moisture Resistant Terminal Enclosure
- ✓ 0.475" Dia. Stainless Steel or INCOLOY Sheath Elements (15 - 50 W/in<sup>2</sup>)
- ✓ With & Without Thermostat
- ✓ UL, CSA and Other Third Party Approval, Listing or Certification Available on Many Models

### APPLICATIONS

#### Pure Water:

Heating of demineralized or de-ionized water that is highly aggressive to mild steel.

#### Mildly Corrosive Solutions:

Heat mildly corrosive solutions (pH5 to pH9) using stainless elements and a passivated stainless pipe body.

#### Highly Corrosive Solutions and Oils:

Low watt density INCOLOY sheath elements coupled with a passivated Stainless Steel pipe body provides long service life when heating highly corrosive solutions and sulfur laden oils.

#### Steam Superheating:

Increase the enthalpy and quality of steam. Smaller units can be used to make up line losses in steam generating and distribution systems.

#### High Temperature Gas:

INCOLOY elements and a Stainless Steel vessel enhance safe operation to nearly 1400°F outlet gas temperature in air, gas or steam superheating applications.

### FEATURES

**Terminal Enclosures:** Standard stock heater terminal enclosure E1 General Purpose. Moisture Resistant/Explosion Resistant E2, Explosion Resistant E3 or Moisture Resistant E4 Enclosures are available as assembly stock.

**Elements:** Sturdy 0.475" Dia. Stainless Steel or INCOLOY sheath elements provide superior strength and rigidity. OMEGALUX elements utilize high quality resistance wire for coil construction. The coil is surrounded with high purity magnesium oxide which is compacted to a dense solid to ensure high thermal conductivity and dielectric strength.

**Corrosion Resistance:** NWHMTSS, NWHIS and NWHOIS pipe bodies and all Stainless Steel heating elements are passivated to provide additional resistance to corrosion.

**Flanges:** Type 304 Stainless Steel flanges are standard on 3" and larger circulation heaters. Flange dimensions conform to ANSI B16.5 standards. Series NWHMTSS heaters utilize a Stainless Steel screw plug.

**Vessels:** Pipe body and nozzles are type 304 ASTM A312 ERW Stainless Steel pipe. The end disks are type 304 ASTM A240 Stainless Steel plate. Provided with thermal insulation and painted sheet metal jacket.

**Baffle Assemblies:** Internal baffle assemblies are provided for model GCHISB-18 heaters to increase the velocity of the air, gas or steam as it passes through the vessel. Increasing the velocity of the gas helps reduce the temperature of the element sheaths and the vessel walls in critical applications.

**Wiring:** Wiring terminals are spaced to provide proper arcing and creepage clearances per the NEC. Termination insulators provide electrical isolation between the terminals and the grounded metal sheath to enhance personnel safety and equipment service life. Heavy duty jumper straps and other terminal parts assure tight connections and an extra margin of current carrying capacity.



**Controls:** All stock and assembly stock heaters, Series MTSS, 03 and 06, come equipped with mechanical AR thermostats. These thermostats are suitable for most applications. Explosion-resistant and liquid-tight thermostats are provided on E2/E3 and E4 units, respectively. Individual product pages list other types of thermostats and controls available for each heater. For heaters listed without controls, refer to the Overview on Mechanical and Electrical Control Options in this section.

**Precision Temperature Control and Control Panels:** For larger kW heaters and precise control of gas temperatures in high temperature applications, OMEGALUX recommends the use of thermocouple sensors, electronic PID temperature controls and SCR power panels for circulation heater applications. The use of electronic and SCR controls will minimize overshoot and reduce the possibility of heater damage from overtemperature operation. Integral or remote mounted control panels with electronic controls and solid state (SCR) or contactor power controllers can be provided using virtually any combination of control devices. Consult the Controls section for details.

# PURE WATER & MILDLY CORROSIVE SOLUTION APPLICATIONS



## NWHMTSS Series

- ✓ 2½" NPT Stainless Steel Screw Plug Design
- ✓ 2½" Passivated Stainless Steel Pipe Body, 150 Lb Construction
- ✓ 3 - 18 kW
- ✓ 120, 240 and 480V, 1 & 3 Phase
- ✓ General Purpose, Moisture Resistant/Explosion Resistant Terminal Enclosure
- ✓ Three 0.475" Dia. Stainless Steel Sheath Elements (50 W/in<sup>2</sup>)
- ✓ Integral Thermostat (60 - 250°F)
- ✓ UL, CSA and Other Third Party Approval, Listing or Certification Available on Many Models

### APPLICATIONS

Remote and Booster Heating of demineralized or de-ionized water and mildly corrosive solutions (pH5 to pH9).

### FEATURES

#### Terminal Enclosure:

E1 General Purpose is standard. E2 enclosure available.

#### Elements:

Three Type 304 passivated Stainless Steel sheath elements.

#### Screw Plug:

2½" Type 304 Stainless Steel screw plug with ½" thermowell for thermostat bulb.

#### Vessel:

Pipe body and nozzles are type 304 ASTM A312 ERW Stainless Steel pipe. The end disks are type 304 ASTM A240 or A479 Stainless Steel plate. Provided with thermal insulation and 20 gauge painted sheet metal jacket.

#### Wiring:

Convenient field wiring terminals are provided for easy installation.

#### Controls:

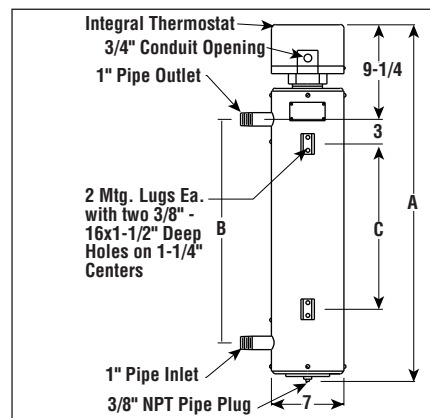
Stock and assembly stock heaters come equipped with integral thermostat.

**MOST POPULAR ITEMS HIGHLIGHTED**

**To Order (Specify Model Number)**



Dimensions (Inches)  
NWHMTSS-03



Note - Add 2" to A dimension for E2 Enclosure.

kW	Volts	Ckt & Phase	Dimensions (In.)			Model No.	Price	Wt. (Lbs.)
			A	B	C			
3	120	1-1	21%	9%	—	NWHMTSS-03-003P-E1/120	\$2237	15
3	240	1-1	21%	9%	—	NWHMTSS-03-003P-E1/240	2237	15
3	240	1-3	21%	9%	—	NWHMTSS-03-003P-E1/240/3P	2237	15
3	480	1-1	21%	9%	—	NWHMTSS-03-003P-E1/480	2237	15
3	480	1-3	21%	9%	—	NWHMTSS-03-003P-E1/480/3P	2237	15
4.5	240	1-1	21%	9%	—	NWHMTSS-03-04P5-E1/240	2286	15
4.5	240	1-3	21%	9%	—	NWHMTSS-03-04P5-E1/240/3P	2286	15
4.5	480	1-1	21%	9%	—	NWHMTSS-03-04P5-E1/480	2286	15
4.5	480	1-3	21%	9%	—	NWHMTSS-03-04P5-E1/480/3P	2286	15
6	240	1-1	34%	22½	16½	NWHMTSS-03-006P-E1/240	2401	22
6	240	1-3	34%	22½	16½	NWHMTSS-03-006P-E1/240/3P	2401	22
6	480	1-1	34%	22½	16½	NWHMTSS-03-006P-E1/480	2401	22
6	480	1-3	34%	22½	16½	NWHMTSS-03-006P-E1/480/3P	2401	22
9	240	1-1	34%	22½	16½	NWHMTSS-03-009P-E1/240	2471	22
9	240	1-3	34%	22½	16½	NWHMTSS-03-009P-E1/240/3P	2471	22
9	480	1-1	34%	22½	16½	NWHMTSS-03-009P-E1/480	2471	22
9	480	1-3	34%	22½	16½	NWHMTSS-03-009P-E1/480/3P	2471	22
12	240	1-1	57%	45%	39%	NWHMTSS-03-012P-E1/240	2543	40
12	240	1-3	57%	45%	39%	NWHMTSS-03-012P-E1/240/3P	2543	40
12	480	1-1	57%	45%	39%	NWHMTSS-03-012P-E1/480	2543	40
12	480	1-3	57%	45%	39%	NWHMTSS-03-012P-E1/480/3P	2543	40
15	240	1-1	57%	45%	39%	NWHMTSS-03-015P-E1/240	2654	40
15	240	1-3	57%	45%	39%	NWHMTSS-03-015P-E1/240/3P	2654	40
15	480	1-1	57%	45%	39%	NWHMTSS-03-015P-E1/480	2654	40
15	480	1-3	57%	45%	39%	NWHMTSS-03-015P-E1/480/3P	2654	40
18	240	1-1	57%	45%	39%	NWHMTSS-03-018P-E1/240	2772	40
18	240	1-3	57%	45%	39%	NWHMTSS-03-018P-E1/240/3P	2772	40
18	480	1-1	57%	45%	39%	NWHMTSS-03-018P-E1/480	2772	40
18	480	1-3	57%	45%	39%	NWHMTSS-03-018P-E1/480/3P	2772	40

#### Ordering Example:

**NWHMTSS-03-009P-E1/480** is a 9 kW, 1 Phase, 480 Volt Heater, \$2471.

#### Ordering Information

To Order: Complete the Model Number using the Matrix provided.

Model	Pure Water and Mildly Corrosive Solution			
NWHMTSS	Water Circulation Heater with Screw Plug Stainless Steel Sheath — Stainless Steel Vessel			
<b>Code</b>	<b>Number of Elements</b>			
03	Three			
	<b>Code</b>	<b>kW</b>		
	003P	3	009P	9
	04P5	4.5	012P	12
	006P	6	015P	15
			018P	18
	<b>Code</b>	<b>Terminal Enclosure</b>		
	E1	General Purpose		
	E2	Moisture Resistant/Explosion Resistant		
NWHMTSS 03	003P	E1	Typical Model Number	



# PURE WATER AND MILDLY CORROSIVE SOLUTION APPLICATIONS

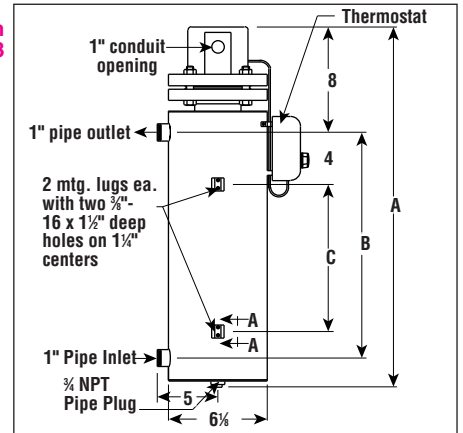
## NWHIS Series

Dimensions: in  
NWHIS-03

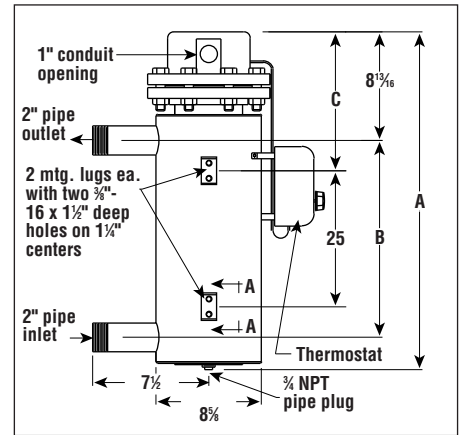
**MOST POPULAR MODELS HIGHLIGHTED!**

### To Order (Specify Model Number)

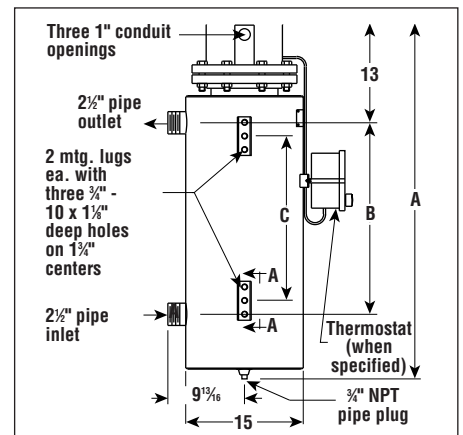
kW	Volts	Ckt & Phase	Dimensions: in			Model No.	Price	Wt. (lb)
			A	B	C			
<b>Series 03—3", 150 lb, 304 Passivated Stainless Steel Vessel, 3 INCOLOY Elements (45 W/in<sup>2</sup>) with Side Mounted Thermostat (60 to 250°F)—1 NPT Pipe Inlet and Outlet</b>								
6	240	1-3	32 <sup>1</sup> / <sub>16</sub>	22 <sup>1</sup> / <sub>2</sub>	16 <sup>1</sup> / <sub>2</sub>	NWHIS-03-006P-E1/240	\$5800	70
6	480	1-3	32 <sup>1</sup> / <sub>16</sub>	22 <sup>1</sup> / <sub>2</sub>	16 <sup>1</sup> / <sub>2</sub>	NWHIS-03-006P-E1/480	5800	70
12	240	1-3	42 <sup>1</sup> / <sub>16</sub>	32 <sup>1</sup> / <sub>2</sub>	26 <sup>1</sup> / <sub>2</sub>	NWHIS-03-012P-E1/240	6200	80
12	480	1-3	42 <sup>1</sup> / <sub>16</sub>	32 <sup>1</sup> / <sub>2</sub>	26 <sup>1</sup> / <sub>2</sub>	NWHIS-03-012P-E1/480	6200	80
18	240	1-3	55 <sup>1</sup> / <sub>16</sub>	45	39	NWHIS-03-018P-E1/240	6700	98
18	480	1-3	55 <sup>1</sup> / <sub>16</sub>	45	39	NWHIS-03-018P-E1/480	6700	98
<b>Series 06—5", 150 lb, 304 Passivated Stainless Steel Vessel, 6 INCOLOY Elements (45 W/in<sup>2</sup>) with Side Mounted Thermostat (60 to 250°F)—2 NPT Pipe Inlet and Outlet</b>								
24	240	2-3	41 <sup>1</sup> / <sub>4</sub>	30	11 <sup>1</sup> / <sub>2</sub>	NWHIS-06-024P-E1/240	\$10,750	140
24	480	1-3	41 <sup>1</sup> / <sub>4</sub>	30	11 <sup>1</sup> / <sub>2</sub>	NWHIS-06-024P-E1/480	10,750	140
30	240	2-3	48 <sup>1</sup> / <sub>4</sub>	37	14 <sup>1</sup> / <sub>4</sub>	NWHIS-06-030P-E1/240	11,700	155
30	480	1-3	48 <sup>1</sup> / <sub>4</sub>	37	14 <sup>1</sup> / <sub>4</sub>	NWHIS-06-030P-E1/480	11,700	155
40	240	2-3	60 <sup>1</sup> / <sub>4</sub>	48 <sup>1</sup> / <sub>2</sub>	20 <sup>1</sup> / <sub>2</sub>	NWHIS-06-040P-E1/240	13,200	176
40	480	2-3	60 <sup>1</sup> / <sub>4</sub>	48 <sup>1</sup> / <sub>2</sub>	20 <sup>1</sup> / <sub>2</sub>	NWHIS-06-040P-E1/480	13,200	176
50	480	2-3	73 <sup>1</sup> / <sub>2</sub>	61 <sup>1</sup> / <sub>2</sub>	27 <sup>1</sup> / <sub>2</sub>	NWHIS-06-050P-E1/240	14,950	210
<b>Series 18—8", 150 lb, 304 Passivated Stainless Steel Vessel, 18 INCOLOY Elements (45 W/in<sup>2</sup>)—2 1/2" NPT Pipe Inlet and Outlet</b>								
50	240	3-3	45 <sup>1</sup> / <sub>4</sub>	24 <sup>1</sup> / <sub>16</sub>	27 <sup>1</sup> / <sub>16</sub>	NWHIS-18-050P-E1/240	\$20,050	396
50	480	3-3	45 <sup>1</sup> / <sub>4</sub>	24 <sup>1</sup> / <sub>16</sub>	27 <sup>1</sup> / <sub>16</sub>	NWHIS-18-050P-E1/480	20,050	396
75	240	3-3	53 <sup>1</sup> / <sub>4</sub>	32 <sup>1</sup> / <sub>16</sub>	29 <sup>1</sup> / <sub>16</sub>	NWHIS-18-075P-E1/240	21,700	414
75	480	3-3	53 <sup>1</sup> / <sub>4</sub>	32 <sup>1</sup> / <sub>16</sub>	29 <sup>1</sup> / <sub>16</sub>	NWHIS-18-075P-E1/480	21,700	414
100	240	3-3	60 <sup>1</sup> / <sub>4</sub>	39 <sup>1</sup> / <sub>16</sub>	36 <sup>1</sup> / <sub>16</sub>	NWHIS-18-100P-E1/240	21,800	425
100	480	3-3	60 <sup>1</sup> / <sub>4</sub>	39 <sup>1</sup> / <sub>16</sub>	36 <sup>1</sup> / <sub>16</sub>	NWHIS-18-100P-E1/480	21,800	425
125	240	3-3	67 <sup>1</sup> / <sub>4</sub>	47 <sup>1</sup> / <sub>16</sub>	43 <sup>1</sup> / <sub>16</sub>	NWHIS-18-125P-E1/240	26,000	470
125	480	3-3	67 <sup>1</sup> / <sub>4</sub>	47 <sup>1</sup> / <sub>16</sub>	43 <sup>1</sup> / <sub>16</sub>	NWHIS-18-125P-E1/480	26,000	470
150	240	3-3	77 <sup>1</sup> / <sub>4</sub>	56 <sup>1</sup> / <sub>16</sub>	53 <sup>1</sup> / <sub>16</sub>	NWHIS-18-150P-E1/240	28,850	535
150	480	3-3	77 <sup>1</sup> / <sub>4</sub>	56 <sup>1</sup> / <sub>16</sub>	53 <sup>1</sup> / <sub>16</sub>	NWHIS-18-150P-E1/480	28,850	535
175	240	3-3	86 <sup>1</sup> / <sub>4</sub>	65 <sup>1</sup> / <sub>16</sub>	62 <sup>1</sup> / <sub>16</sub>	NWHIS-18-175P-E1/240	31,650	625
175	480	3-3	86 <sup>1</sup> / <sub>4</sub>	65 <sup>1</sup> / <sub>16</sub>	62 <sup>1</sup> / <sub>16</sub>	NWHIS-18-175P-E1/480	31,650	625
200	240	3-3	96 <sup>1</sup> / <sub>4</sub>	75 <sup>1</sup> / <sub>16</sub>	72 <sup>1</sup> / <sub>16</sub>	NWHIS-18-200P-E1/240	34,950	705
200	480	3-3	96 <sup>1</sup> / <sub>4</sub>	75 <sup>1</sup> / <sub>16</sub>	72 <sup>1</sup> / <sub>16</sub>	NWHIS-18-200P-E1/480	34,950	705



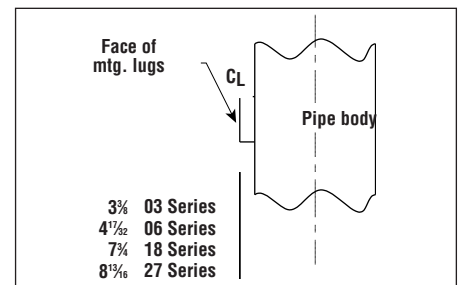
NWHIS-06



NWHIS-18



NWHIS-AA



Model	Pure Water and Mildly Corrosive Solution	
NWH	Water Circulation Heater	
IS	INCOLOY Elements — Stainless Steel Vessel	
Code	Number of Elements	
03	Three	
06	Six	
18	Eighteen	
Code	kW	
006P	6	150P 150
012P	12	175P 175
018P	18	200P 200
024P	24	
030P	30	
Code	Terminal Enclosure	
E1	General Purpose	
E2	Moisture Resistant/Explosion Resistant	
E3	Explosion Resistant	
E4	Moisture Resistant	
NWH	03	006P E1
Typical Model Number		

**Ordering Example:**  
NWHIS-18-050P-E1/240,  
50 kW, 240V heater,  
\$20,050.

Note: Refer to the Controls section for side mounted controls or control panels.

### Ordering Information

To Order—Complete the Model Number using the Matrix provided.

# CORROSIVE OIL & HIGHLY CORROSIVE SOLUTION APPLICATIONS

## NWHOIS Series



### To Order (Specify Model Number)

**MOST POPULAR  
ITEMS HIGHLIGHTED**

kW	Volts	Ckt & Phase	Dimensions (In.)			Model No.	Price	Wt. (Lbs.)
			A	B	C			
<b>Series 03 — 3 inch, 150 lb 304 passivated stainless steel vessel, 3 INCOLOY elements (15 W/in<sup>2</sup>) with side mounted thermostat (60 to 250°F) — 1" NPT pipe inlet and outlet</b>								
2	240	1-3	32 <sup>15</sup> / <sub>16</sub>	22 <sup>1</sup> / <sub>2</sub>	16 <sup>1</sup> / <sub>2</sub>	NWHOIS-03-002P-E1/240	\$3279	70
2	480	1-3	32 <sup>15</sup> / <sub>16</sub>	22 <sup>1</sup> / <sub>2</sub>	16 <sup>1</sup> / <sub>2</sub>	NWHOIS-03-002P-E1/480	3279	70
4	240	1-3	42 <sup>15</sup> / <sub>16</sub>	32 <sup>1</sup> / <sub>2</sub>	26 <sup>1</sup> / <sub>2</sub>	NWHOIS-03-004P-E1/240	3495	80
4	480	1-3	42 <sup>15</sup> / <sub>16</sub>	32 <sup>1</sup> / <sub>2</sub>	26 <sup>1</sup> / <sub>2</sub>	NWHOIS-03-004P-E1/480	3495	80
6	240	1-3	55 <sup>5</sup> / <sub>16</sub>	45	39	NWHOIS-03-006P-E1/240	3784	98
6	480	1-3	55 <sup>5</sup> / <sub>16</sub>	45	39	NWHOIS-03-006P-E1/480	3784	98
<b>Series 06 — 5 inch, 150 lb 304 passivated stainless steel vessel, 6 INCOLOY elements (15 W/in<sup>2</sup>) with side mounted thermostat (60 to 250°F) — 2" NPT pipe inlet and outlet</b>								
8	240	1-3	4 <sup>1</sup> / <sub>4</sub>	30	11 <sup>1</sup> / <sub>2</sub>	NWHOISR-06-008P-E1/240	6069	140
8	480	1-3	4 <sup>1</sup> / <sub>4</sub>	30	11 <sup>1</sup> / <sub>2</sub>	NWHOISR-06-008P-E1/480	6069	140
12	240	1-3	60 <sup>1</sup> / <sub>4</sub>	48 <sup>1</sup> / <sub>2</sub>	20 <sup>1</sup> / <sub>2</sub>	NWHOISR-06-012P-E1/240	7445	176
12	480	1-3	60 <sup>1</sup> / <sub>4</sub>	48 <sup>1</sup> / <sub>2</sub>	20 <sup>1</sup> / <sub>2</sub>	NWHOISR-06-012P-E1/480	7445	176
<b>Series 06 — 5 inch, 150 lb 304 passivated stainless steel vessel, 6 INCOLOY elements (23 W/in<sup>2</sup>) with side mounted thermostat (60 to 250°F) — 2" NPT pipe inlet and outlet</b>								
25	240	2-3	73 <sup>3</sup> / <sub>8</sub>	61 <sup>1</sup> / <sub>2</sub>	27 <sup>3</sup> / <sub>8</sub>	NWHOIS-06-025P-E1/240	8402	176
25	480	1-3	73 <sup>3</sup> / <sub>8</sub>	61 <sup>1</sup> / <sub>2</sub>	27 <sup>3</sup> / <sub>8</sub>	NWHOIS-06-025P-E1/480	8402	176
30	240	2-3	86 <sup>3</sup> / <sub>8</sub>	74 <sup>3</sup> / <sub>8</sub>	33 <sup>3</sup> / <sub>8</sub>	NWHOIS-06-030P-E1/240	9407	240
30	480	1-3	86 <sup>3</sup> / <sub>8</sub>	74 <sup>3</sup> / <sub>8</sub>	33 <sup>3</sup> / <sub>8</sub>	NWHOIS-06-030P-E1/480	9407	240

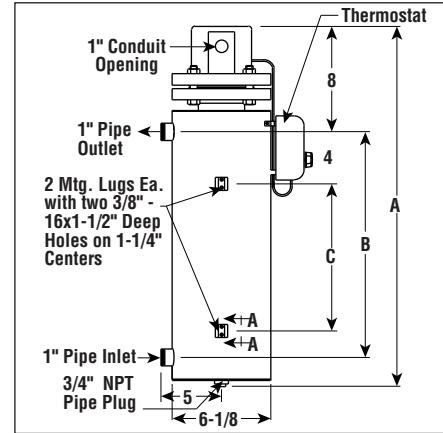
**Ordering Example:** NWHOISR-06-008P-E1/480 is a 8 kW, 480 Volt Heater, \$6069.  
**Note** — Refer to the Controls section for side mounted controls or control panels.

### Ordering Information

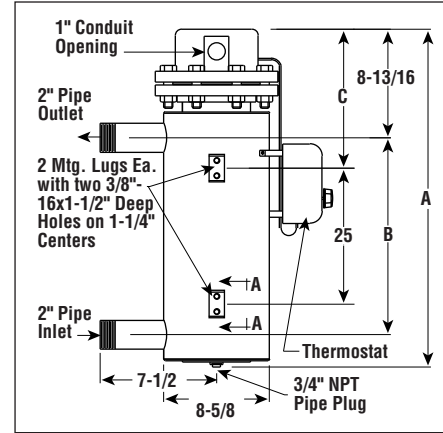
To Order — Complete the Model Number using the Matrix provided.

Model	Corrosive Oil and Highly Corrosive Solution	
NWHO	Oil Circulation Heater	
IS	INCOLOY Elements — Stainless Steel Vessel	
R	Reduced Watt Density	
Code	Number of Elements	
03	Three	
06	Six	
Code	kW	
002P	2	008P 8      030P 30
004P	4	012P 12
006P	6	025P 25
Code	Terminal Enclosure	
E1	General Purpose	
E2	Moisture Resistant/Explosion Resistant	
E3	Explosion Resistant	
E4	Moisture Resistant	
NWHOIS 03	002P E1	Typical Model Number

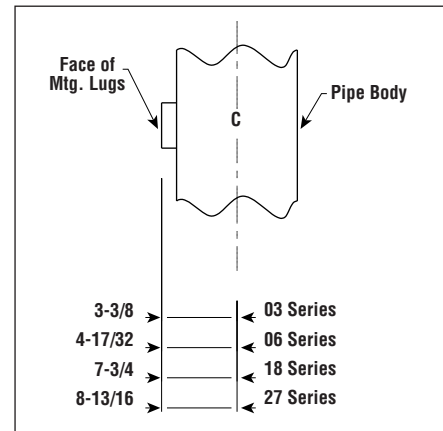
### Dimensions (Inches) NWHOIS-03



### NWHOIS-06



### NWHOIS-AA





#### UNITED STATES

[www.omega.com](http://www.omega.com)  
1-800-TC-OMEGA  
Stamford, CT.

#### CANADA

[www.omega.ca](http://www.omega.ca)  
Laval(Quebec)  
1-800-TC-OMEGA

#### GERMANY

[www.omega.de](http://www.omega.de)  
Deckenpfronn, Germany  
0800-8266342

#### UNITED KINGDOM

[www.omega.co.uk](http://www.omega.co.uk)  
Manchester, England  
0800-488-488

#### FRANCE

[www.omega.fr](http://www.omega.fr)  
Guyancourt, France  
088-466-342

#### CZECH REPUBLIC

[www.omegaeng.cz](http://www.omegaeng.cz)  
Karviná, Czech Republic  
596-311-899

#### BENELUX

[www.omega.nl](http://www.omega.nl)  
Amstelveen, NL  
0800-099-33-44



## More than 100,000 Products Available!

### • Temperature

Calibrators, Connectors, General Test and Measurement Instruments, Glass Bulb Thermometers, Handheld Instruments for Temperature Measurement, Ice Point References, Indicating Labels, Crayons, Cements and Lacquers, Infrared Temperature Measurement Instruments, Recorders Relative Humidity Measurement Instruments, RTD Probes, Elements and Assemblies, Temperature & Process Meters, Timers and Counters, Temperature and Process Controllers and Power Switching Devices, Thermistor Elements, Probes and Assemblies, Thermocouples Thermowells and Head and Well Assemblies, Transmitters, Wire

### • Flow and Level

Air Velocity Indicators, Doppler Flowmeters, Level Measurement, Magnetic Flowmeters, Mass Flowmeters, Pitot Tubes, Pumps, Rotameters, Turbine and Paddle Wheel Flowmeters, Ultrasonic Flowmeters, Valves, Variable Area Flowmeters, Vortex Shedding Flowmeters

### • pH and Conductivity

Conductivity Instrumentation, Dissolved Oxygen Instrumentation, Environmental Instrumentation, pH Electrodes and Instruments, Water and Soil Analysis Instrumentation

### • Data Acquisition

Auto-Dialers and Alarm Monitoring Systems, Communication Products and Converters, Data Acquisition and Analysis Software, Data Loggers Plug-in Cards, Signal Conditioners, USB, RS232, RS485 and Parallel Port Data Acquisition Systems, Wireless Transmitters and Receivers

### • Pressure, Strain and Force

Displacement Transducers, Dynamic Measurement Force Sensors, Instrumentation for Pressure and Strain Measurements, Load Cells, Pressure Gauges, Pressure Reference Section, Pressure Switches, Pressure Transducers, Proximity Transducers, Regulators, Strain Gages, Torque Transducers, Valves

### • Heaters

Band Heaters, Cartridge Heaters, Circulation Heaters, Comfort Heaters, Controllers, Meters and Switching Devices, Flexible Heaters, General Test and Measurement Instruments, Heater Hook-up Wire, Heating Cable Systems, Immersion Heaters, Process Air and Duct, Heaters, Radiant Heaters, Strip Heaters, Tubular Heaters