

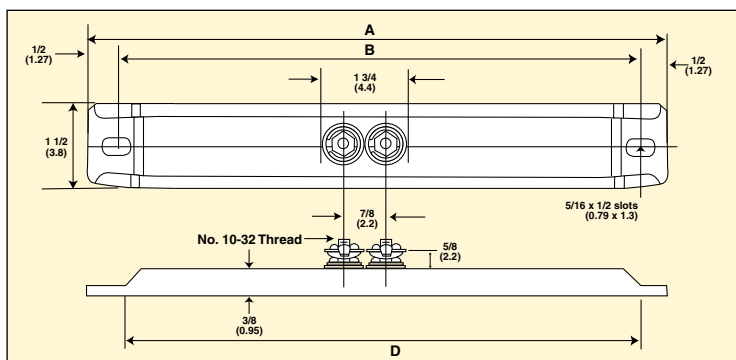
# STRIP HEATERS

## 2 TERMINALS CENTERED

### ST Series



- ✓ 1½" (3.8 cm) Wide
- ✓ Rugged, Reliable, Premium Quality
- ✓ 350 to 1000 Watt
- ✓ U.L. Component Recognized and C.S.A. Certified



**CAUTION AND WARNING!**  
 Fire and electrical shock may result if products are used improperly or installed or used by non-qualified personnel. See inside back cover for additional warnings.

OMEGALUX® "ST" series strip heaters are used in applications for convection air heating and clamp on installations. Typical applications would involve clamping them to metal surfaces such as platens, outer surfaces of large vats tanks and heating ducts. Two important factors must be considered when selecting a strip heater:

1. The proper sheath material for resisting any rusting and oxidizing inherent in the process or

environment and for withstanding the sheath temperature required. Standard sheath materials are rust resisting iron, chrome steel and Incoloy (NS Series only). Stainless steel and Monel sheaths are available at an additional charge.

2. The watt density of the element, or watts per square inch of heated area. This should be low for heating asphalt, molasses and other thick substances with low heat transferability; it can be higher for

heating air, metals and other heat-conducting materials. (See appropriate curves for determining allowable watt densities.)

### SPECIFICATIONS

**Sheath Material:** Chrome Steel  
**Max. Sheath Temp:** 1200°F  
**Power:** 120 Vac or 240 Vac.

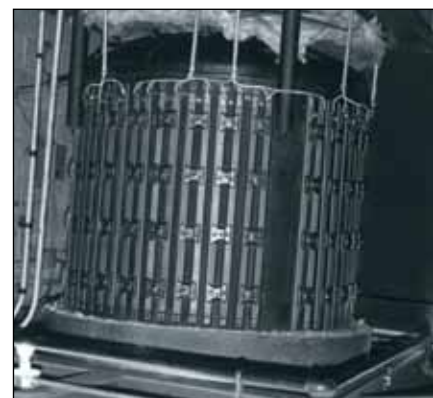
### To Order

| Dimensions: in (cm) |          |          | Watts | W/In <sup>2</sup> | Model No. | Wt. lb (kg) |
|---------------------|----------|----------|-------|-------------------|-----------|-------------|
| A                   | B        | D        |       |                   |           |             |
| 10½ (27)            | 9½ (24)  | 9 (23)   | 350   | 15                | ST-1003/* | 0.75 (0.34) |
| 12 (30)             | 11 (28)  | 10½ (27) | 500   | 17                | ST-1205/* | 0.88 (0.39) |
| 15¼ (39)            | 14¼ (36) | 13¾ (35) | 500   | 12                | ST-1505/* | 1.13 (0.51) |
| 17¾ (45)            | 16¾ (43) | 16¾ (43) | 750   | 15                | ST-1807/* | 1.38 (0.63) |
| 23¾ (60)            | 22¾ (58) | 22¼ (57) | 1000  | 14                | ST-2401/* | 1.81 (0.82) |

/\* Designate voltage, i.e.; insert 120 for 120 Vac or 240 for Vac. Additional strip heater models available in other widths and configurations. Contact OMEGA.

† To determine maximum allowable wall density, see Figures online.

**Ordering Example:** ST-1807/120, 120 Vac, strip heater with two centered terminals.



Strip heaters used for tank heating.