

TENSION PLATES

FOR LC402/LC412 SERIES LOAD CELLS

17-4 PH STAINLESS STEEL

Tension Plates
For LC402/LC412 Load Cells
Ranges
50 lb to 750,000 lb
23 kgf to 340,290 kgf

1 Newton = 0.2248 lb
 1 daNewton = 10 Newtons
 1 lb = 454 g
 1 t = 1000 kg = 2204 lb



LC412-TP225 shown actual size.

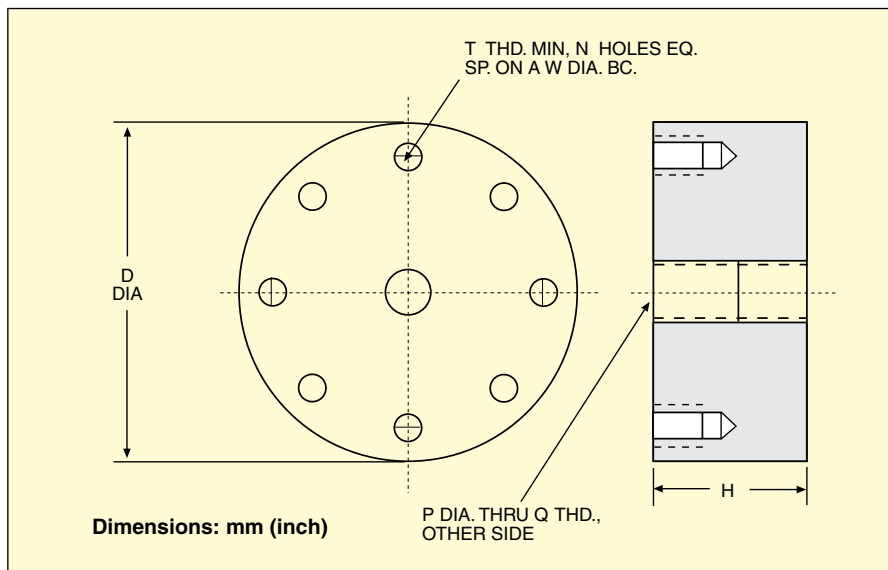
LC412-TP Series



✓ Mounting Hardware Included

LC412 tension plates attach to the base of LC402/LC412 Series load cells and provide a second threaded center hole for tension applications.

The LC412-TP288 tension plate attaches to the base of the LC412-3K load cell (see diagram).



Dimensions: mm (inch)

CAPACITY		MODEL NO.	Dimensions: mm (inch)						
lb	kgf		D	H	P	Q	T	N	W
50 to 300	23 to 136	LC412-TP225	76 (3.00)	38 (1.50)	8.4 (0.332)	3/8-24 x 3/16 DP.	1/4-28 x 0.50 DP.	8	57 (2.25)
500 to 3K	227 to 1361	LC412-TP288	89 (3.50)	38 (1.50)	12 (0.453)	1/2-20 x 0.62 DP.	1/4-28 x 0.50 DP.	8	73 (2.88)
5K to 10K	2269 to 4537	LC412-TP325	95 (3.75)	38 (1.50)	18 (0.688)	3/4-16 x 1.00 DP.	1/4-28 x 0.50 DP.	8	83 (3.25)
20K to 25K	6806 to 11,343	LC412-TP350	102 (4.00)	51 (2.00)	24 (0.933)	1-14 x 1.50 DP.	3/8-24 x 0.75 DP.	8	89 (3.50)
30K to 50K	13,612 to 22,686	LC412-TP563	178 (7.00)	76 (3.00)	36 (1.42)	1 1/2 x 2.00 DP.	1/2-20 x 1.00 DP.	8	143 (5.63)
75K	34,029	LC412-TP675	203 (8.00)	89 (3.50)	42 (1.67)	1 3/4-12 x 2.75 DP.	5/8-11 x 0.81 DP.	8	171 (6.75)
100K	45,372	LC412-TP800	241 (9.50)	102 (4.00)	49 (1.92)	2-12 x 2.50 DP.	3/4-10 x 1.00 DP.	12	203 (8.00)
150K to 200K	90,744 to 136,116	LC412-TP925	279 (11.0)	102 (4.00)	63 (2.42)	2 1/2-12 x 3.00 DP.	1-8 x 1.50 DP.	12	235 (9.25)
300K to 400K	136,116 to 181,488	LC412-TP925-3	279 (11.0)	102 (4.00)	63 (2.92)	3-12 x 3.50 DP.	1-8 x 1.50 DP.	12	235 (9.25)
500K	136,116 to 226,860	LC412-TP1025	279 (11.0)	102 (4.00)	86 (3.38)	3 1/2-8 x 3.50 DP.	1-7/8 x 1.75 DP.	12	260 (10.25)
750K	136,116 to 340,290	LC412-TP1100	330 (13.0)	114 (4.50)	99 (3.89)	4-8 x 4.0 DP.	1-7/4 x 1.75 DP.	12	279 (11.00)

Comes complete with mounting hardware.

Ordering Examples: LC412-TP350, fits LC412 load cells from 15,000 to 25,000 lb.

LC412-TP288, fits LC412 load cells from 500 to 3000 lb. LC412-TP925-3, fits LC412 load cells from 300,000 to 400,000 lb.