

RUGGED BEAM LOAD CELLS FOR LOW CAPACITIES

LCDB Series 0-50 to 0-1000 lb

- ✓ 0.25% Interchangeable
- ✓ Calibration Certificate Supplied
- ✓ Water Resistant for Washdown Applications

LCDB
From
\$460

The LCDB single-ended beam-type load cell is constructed as a bending beam for 200 lb or less, and as a shear beam for above 200 lbs. Its high accuracy, low profile, and redundant sealing make it well-suited for use in small and medium platform scales and process applications in harsh environments.

SPECIFICATIONS

Rated Output: 2 mV/V \pm 0.002 mV/V (0.005 mV/V for 100, 200 lb)
(Output tolerance, \pm 0.002 mV/V, may be minimized by end user calibration)

Excitation: 10 Vdc, 15 Vdc max

Calibration: in compression

Accuracy: 0.037% FS

Linearity: 0.03% FS

Hysteresis: 0.02% FS

Repeatability: 0.01% FS

Zero Balance: 1% FS

Creep In 20 min: 0.03% Rdg

Operating Temp. Range: -65 to 200°F (-54 to 93°C)

Compensated Temp. Range: 0 to 150°F (-18 to 66°C)

Thermal Effects: Zero, 0.0015% FS/°F; Output, 0.0008% Rdg/°F

Max. Safe Load: 150% FS; side load, 100% FS (\geq 500 lb), 50% FS (1 k)

Bridge Resistance: 350 Ω \pm 4 Ω

Full Scale Deflection: 0.070 in (500 lb, 1000 lb; 0.026 in)

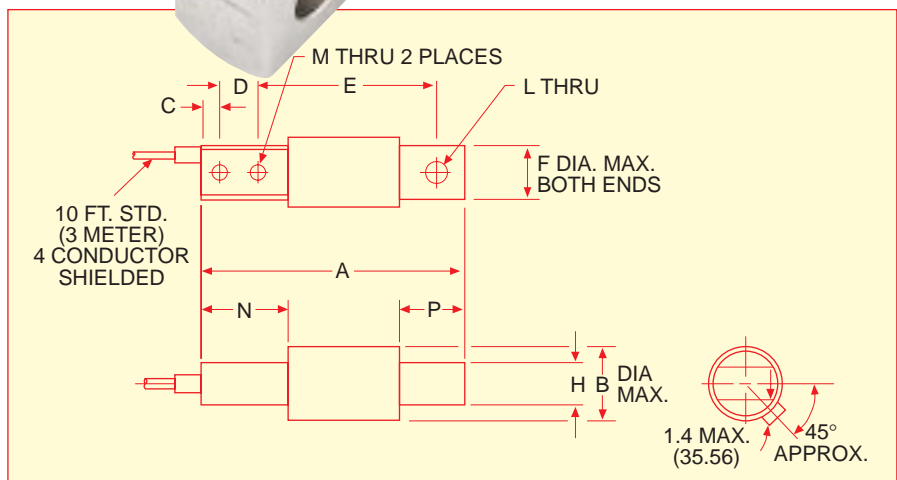
Construction: Nickel-plated steel, Neoprene boot secured by adhesive and stainless steel band. Bending beam <500 lb, shear beam \geq 500 lb

Electrical: 10 in four-conductor shielded cable

Weight: 1.6 lb (.73 kg); 500 lb/1000 lb: 1.8 lb (.82 kg)



Shown smaller than actual size



DIMENSIONS — INCHES (mm)

CAPACITY LB	A	B DIA	C	D	E	F DIA	H	L DIA	M DIA	N	P
50-200	5.00 (127.0)	1.56 (39.6)	.38 (9.7)	.625 (15.9)	3.500 (88.9)	1.23 (31.2)	.750 (19.0)	.391 (9.9)	.266 (6.8)	1.50 (38.1)	1.25 (31.8)
500-1000	5.38 (136.7)		.62 (15.8)	1.000 (25.4)	3.250 (82.6)			.406 (10.3)	.406 (10.3)	2.07 (52.6)	1.20 (30.5)

To Order (Specify Model Number)

MODEL NO.	PRICE	RATED CAPACITY	COMPATIBLE METERS*
LCDB-50	\$460	50 lb	DP25-S, DP41-S, DP3002-S
LCDB-100	460	100 lb	DP25-S, DP41-S, DP3002-S
LCDB-200	460	200 lb	DP25-S, DP41-S, DP3002-S
LCDB-500	460	500 lb	DP25-S, DP41-S, DP3002-S
LCDB-1K	480	1000 lb	DP25-S, DP41-S, DP3002-S

*See Section D For Compatible Meters

Ordering Example: LCDB-100, beam load cell with 100 lb capacity, \$460.



UNITED STATES

www.omega.com

1-800-TC-OMEGA
Stamford, CT.

CANADA

www.omega.ca

Laval(Quebec)
1-800-TC-OMEGA

GERMANY

www.omega.de

Deckenpfronn, Germany
0800-8266342

UNITED KINGDOM

www.omega.co.uk

Manchester, England
0800-488-488

FRANCE

www.omega.fr

Guyancourt, France
088-466-342

CZECH REPUBLIC

www.omegaeng.cz

Karviná, Czech Republic
596-311-899

BENELUX

www.omega.nl

Amstelveen, NL
0800-099-33-44



More than 100,000 Products Available!

• Temperature

Calibrators, Connectors, General Test and Measurement Instruments, Glass Bulb Thermometers, Handheld Instruments for Temperature Measurement, Ice Point References, Indicating Labels, Crayons, Cements and Lacquers, Infrared Temperature Measurement Instruments, Recorders Relative Humidity Measurement Instruments, RTD Probes, Elements and Assemblies, Temperature & Process Meters, Timers and Counters, Temperature and Process Controllers and Power Switching Devices, Thermistor Elements, Probes and Assemblies, Thermocouples Thermowells and Head and Well Assemblies, Transmitters, Wire

• Flow and Level

Air Velocity Indicators, Doppler Flowmeters, Level Measurement, Magnetic Flowmeters, Mass Flowmeters, Pitot Tubes, Pumps, Rotameters, Turbine and Paddle Wheel Flowmeters, Ultrasonic Flowmeters, Valves, Variable Area Flowmeters, Vortex Shedding Flowmeters

• pH and Conductivity

Conductivity Instrumentation, Dissolved Oxygen Instrumentation, Environmental Instrumentation, pH Electrodes and Instruments, Water and Soil Analysis Instrumentation

• Data Acquisition

Auto-Dialers and Alarm Monitoring Systems, Communication Products and Converters, Data Acquisition and Analysis Software, Data Loggers Plug-in Cards, Signal Conditioners, USB, RS232, RS485 and Parallel Port Data Acquisition Systems, Wireless Transmitters and Receivers

• Pressure, Strain and Force

Displacement Transducers, Dynamic Measurement Force Sensors, Instrumentation for Pressure and Strain Measurements, Load Cells, Pressure Gauges, Pressure Reference Section, Pressure Switches, Pressure Transducers, Proximity Transducers, Regulators, Strain Gages, Torque Transducers, Valves

• Heaters

Band Heaters, Cartridge Heaters, Circulation Heaters, Comfort Heaters, Controllers, Meters and Switching Devices, Flexible Heaters, General Test and Measurement Instruments, Heater Hook-up Wire, Heating Cable Systems, Immersion Heaters, Process Air and Duct, Heaters, Radiant Heaters, Strip Heaters, Tubular Heaters