

LOW-CAPACITY TENSION OR COMPRESSION LOAD CELLS

Bidirectional
0-100 g to 0-2000 g

LCUA Series

- ✓ Low Capacities from 100 g to 2 kg
- ✓ Can be Used in Tension or Compression
- ✓ Unbonded Strain Gage Design

The LCUA is a low-capacity, tension/compression load cell designed for laboratory force measurement. It is constructed using an unbonded strain gage, which permits measurement of small forces. The LCUA load cell is available in 5 capacities, from 100 g to 2 kg.

SPECIFICATIONS

Full Scale Output: 2 mV/V $\pm 20\%$
(actual output supplied with each load cell)

Excitation: 10 Vdc (15 Vdc max)

Linearity: $\pm 0.3\%$ FS

Hysteresis: $\pm 0.3\%$ FS

Repeatability: $\pm 0.3\%$ FS

Zero Balance: $\pm 10\%$ FS

Operating Temperature:
-58 to 176°F (-50 to 80°C)

Compensated Temperature:
32 to 122°F (0 to 50°C)

Zero Temp Effect: $\pm 0.028\%$ FS/°F

Span Temp Effect: $\pm 0.028\%$ rdg/°F

Bridge Resistance: 270 Ω

Insulation Resistance:
1000 M Ω min @ 50 Vdc

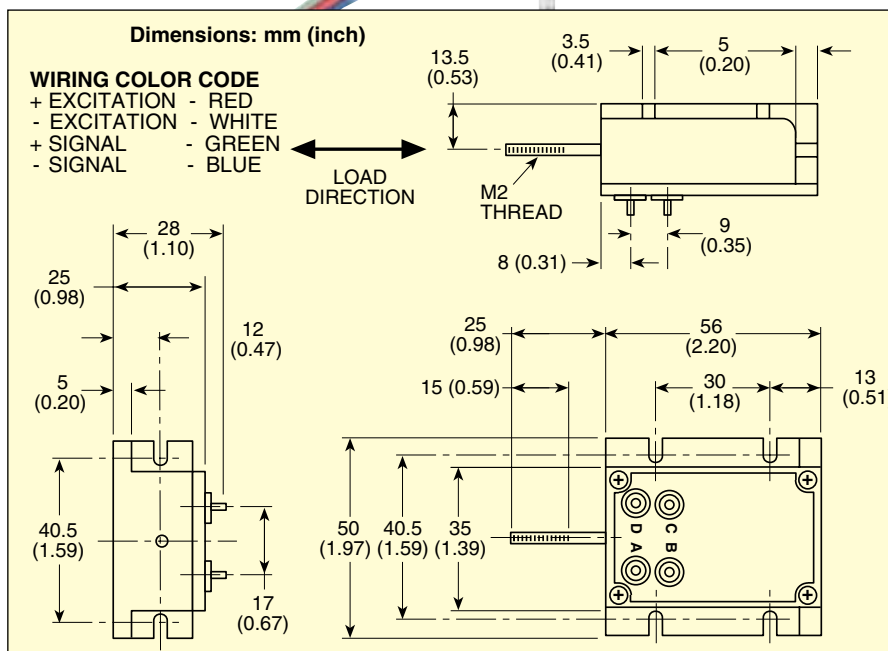
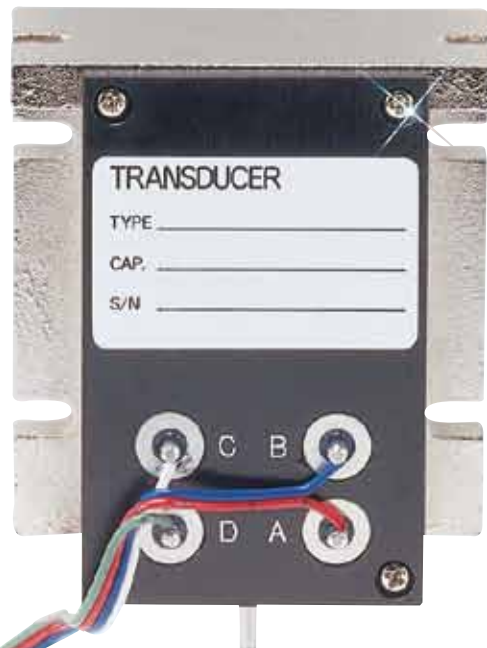
Safe Overload: 150% rated capacity

Full Scale Deflection: 0.002"

Electrical Connection:
24" 4-conductor cable

Weight: 98 g (3.5 oz)

LCUA-200G
shown larger than
actual size.



To Order Visit omega.com/lcua for Pricing and Details

CAPACITY		MODEL NO.	COMPATIBLE METERS*
100 g	0.22 lb	LCUA-100G	DP25B-S, DP41-S, DP87
200 g	0.44 lb	LCUA-200G	DP25B-S, DP41-S, DP87
500 g	1.1 lb	LCUA-500G	DP25B-S, DP41-S, DP87
1000 g	2.2 lb	LCUA-1KG	DP25B-S, DP41-S, DP87
2000 g	4.4 lb	LCUA-2KG	DP25B-S, DP41-S, DP87

* Visit omega.com for compatible meters.

Ordering Example: LCUA-100G, low-capacity load cell with 100 g (0.22 lb) capacity.