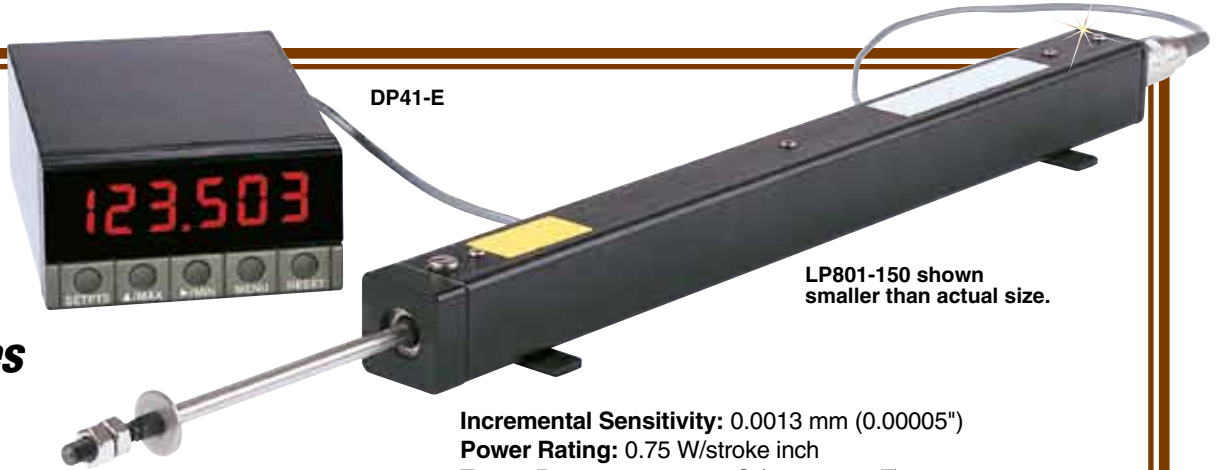


LONG-STROKE LINEAR POTENTIOMETERS FOR DISPLACEMENT MEASUREMENT

150 mm to 1.2 m
(6 to 48") Ranges



LP801 Series

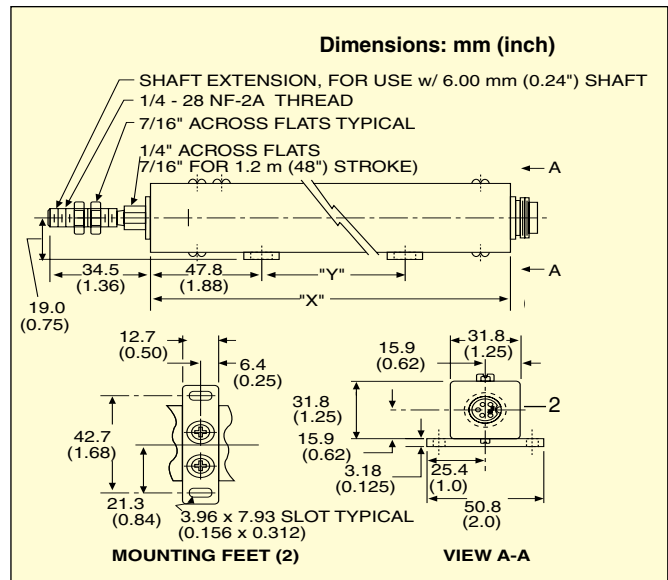
- ✓ Rugged Construction and Shaft Seals for Protection in Factory Environments
- ✓ Precious-Metal Wipers Ensure High Performance and Low Noise
- ✓ Plastic Film Element Reduces Wear for Extremely Long Life

The OMEGA® LP801 Series linear potentiometers can measure linear position or displacement up to 1.2 m (48") in a wide variety of manufacturing and process applications. With their long life, front and rear bearings, anodized extruded aluminum housings, stainless steel shafts, and precious-metal wipers and contacts, these devices are suitable for harsh factory environments. Based on a conductive plastic film element, the LP801 provides high resolution and absolute position measurement without using external signal conditioners.

SPECIFICATIONS

- Total Resistance:** 5000 Ω ± 20%
- Linearity:** ±1% FS
- Hysteresis:** ±0.025 mm (0.001")
- Repeatability:** ±0.012 mm (0.0005")

- Incremental Sensitivity:** 0.0013 mm (0.00005")
- Power Rating:** 0.75 W/stroke inch
- Temp. Range:** -65 to 105°C (-85 to 221°F)
- Operating Force:** 450 g (1 lb) max
- Shaft:** 6 mm (0.236") diameter with 1/4-28 threaded-end adaptor
- Weight:** 0.36 to 2.2 kg (0.8 to 4.9 lb)
- Life:** 100 million operations up to 300 mm (12") stroke—derated proportionally for longer units [standard rate of travel 50 mm/s (2"/s)]



DISPLACEMENT

To Order Visit omega.com/lp801 for Pricing and Details

MODEL NO.	ELECTRICAL TRAVEL		MECHANICAL TRAVEL		"X" DIMENSION (NOMINAL)		"Y" DIMENSION (NOMINAL)		COMPATIBLE METERS
	mm	inch	mm	inch	mm	inch	mm	inch	
LP801-150	152	6.0	155	6.10	233	9.19	127	5.00	DP25B-E, DP41-E
LP801-300	305	12.0	307	12.10	380	15.19	279	11.00	DP25B-E, DP41-E
LP801-450	457	18.0	460	18.12	533	21.19	432	17.00	DP25B-E, DP41-E
LP801-600	610	24.0	613	24.13	685	27.19	584	23.00	DP25B-E, DP41-E
LP801-750	762	30.0	765	30.13	838	33.19	737	29.00	DP25B-E, DP41-E
LP801-900	914	36.0	918	36.13	990	39.19	889	35.00	DP25B-E, DP41-E
LP801-1200	1219	48.0	1224	48.18	1295	51.19	1194	47.00	DP25B-E, DP41-E

Comes complete with operator's manual.

Ordering Example: LP801-150, 152 mm (6") stroke linear potentiometer.