

# LOW-COST, LIQUID-FILLABLE UTILITY GAUGES

## PGUF Series

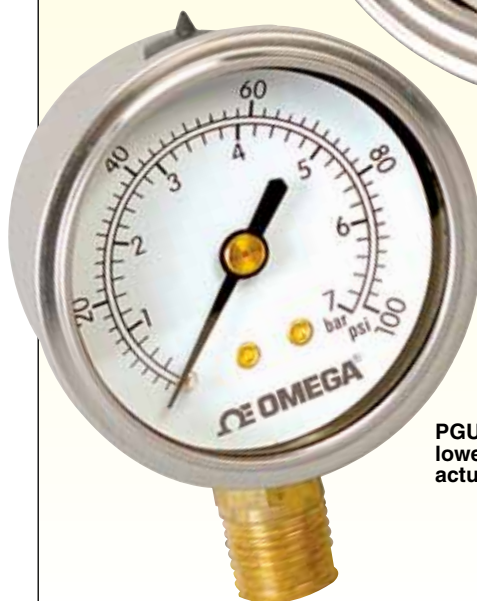
- ✓ Dual Scales in psi and bar Standard
- ✓ Economically Priced
- ✓ 2.5% Full Scale Accuracy
- ✓ 38, 50, or 63 mm Dia. (1½, 2, or 2½")
- ✓ Center Back- or Lower-Mount Fittings

OMEGA's PGUF Series liquid-fillable utility gauges are designed for a wide range of applications on pumps, compressors, hydraulic systems, machine tools, and petrochemical processing equipment. For high-shock and vibration applications, the PGUF can be liquid-filled in the field to dampen the gauge pointer movement.

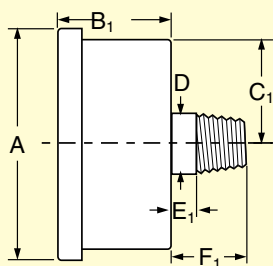
The PGUF Series liquid-fillable gauges come in ranges of (psi/bar) 0 to 30/2, 60/4, 100/7, 160/11, 300/21, 600/42, and 1000/70 [the 63 mm (2½") gauge is also available in 2000/140 and 3000/210]. Rated accuracy is  $\pm 2.5\%$  of span.

The gauges feature a corrosion-resistant 304 SS case and ring, and a durable polycarbonate window. Phosphor bronze Bourdon tubes with brass movement, socket, and NPT connections are standard. PGUF gauges are available in 38 mm (1½"), 50 mm (2"), and 63 mm (2½") designs with center back- or lower-mount NPT connections.

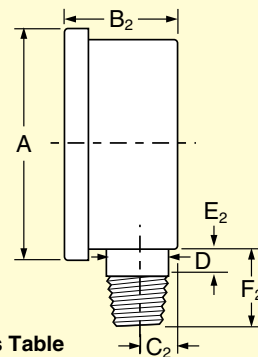
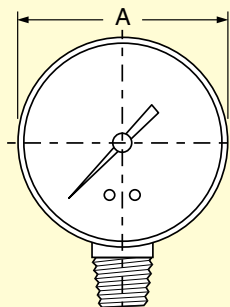
PGUF-25B-100PSI/7BAR, center back-mount gauge, shown actual size.



PGUF-20L-100PSI/7BAR, lower-mount gauge, shown actual size.



PGUF Series



Dimensions Table on Next Page

# HOW TO ORDER PGUF SERIES GAUGES



PGUF-20B-60PSI/4BAR,  
shown slightly larger than  
actual size.



PGUF-25B-100PSI/7BAR,  
shown slightly larger than  
actual size.

## SPECIFICATIONS

**Ranges:** From 30 psi/2 bar to 1000 psi/70 bar  
[2000 psi/140 bar and 3000 psi/200 bar ranges  
on 63 mm (2½") models only]

**Accuracy:** ±2.5%

**Bourdon Tube:** Phosphor bronze

**Window:** Polycarbonate

**Dial:** Galvalume white background with blue and  
black markings

**Pointer:** Galvalume black finish

**Movement:** Brass

**Case and Ring:** 304 stainless steel

**Connection:** ¼ MNPT  
[½ MNPT on 38 mm (1½") dials]

**Seals:** Buna-N

**Scale:** Dual scale psi/bar

**Compatible Filling Liquids:** Glycerin, silicone oil  
or mineral oil

## STANDARD RANGES

RANGE CODE	OUTER SCALE (psi)	INNER SCALE (bar)
30PSI/2BAR	0 to 30	0 to 2
60PSI/4BAR	0 to 60	0 to 4
100PSI/7BAR	0 to 100	0 to 7
160PSI/11BAR	0 to 160	0 to 11
300PSI/21BAR	0 to 300	0 to 21
600PSI/42BAR	0 to 600	0 to 42
1000PSI/70BAR	0 to 1000	0 to 70
2000PSI/140BAR**	0 to 2000	0 to 140
3000PSI/210BAR**	0 to 3000	0 to 210

\*\* 63 mm (2½") gauges only.

## Dimensions: mm (inch)

DIAL SIZE	A	B1	B2	C1	C2	D	E1	E2	F1	F2
38 (1½) (CBM† only)	45.5 (1.79)	26.7 (1.05)	— —	20.9 (0.82)	— —	14.5 (0.57)	8.6 (0.34)	— —	19.6 (0.77)	— —
50 (2)	59.2 (2.33)	28.4 (1.12)	29.0 (1.14)	26.7 (1.05)	10.2 (0.40)	14.5 (0.57)	6.1 (0.24)	7.4 (0.29)	19.4 (0.76)	20.1 (0.79)
63 (2½)	70.1 (2.76)	33.8 (1.33)	33.8 (1.33)	32.3 (1.27)	11.2 (0.44)	14.5 (0.57)	11.7 (0.46)	7.6 (0.30)	25.4 (1.00)	20.8 (0.82)

† Center back mount.

## To Order

DIAL SIZE mm (inch)	MODEL NO.	CONNECTION
38 (1½)	PGUF-15B-[*]	½" back
50 (2)	PGUF-20L-[*]	¼" lower
50 (2)	PGUF-20B-[*]	¼" back
63 (2½)	PGUF-25L-[*]	¼" lower
63 (2½)	PGUF-25B-[*]	¼" back

[\*] Insert range code from Standard Ranges table above.

**Ordering Examples:** PGUF-20L-60PSI/4BAR, 50 mm (2") gauge with lower fitting scaled 0 to 60 psi and 0 to 4 bar.

PGUF-20B-60PSI/4BAR, 50 mm (2") gauge with back fitting scaled 0 to 60 psi and 0 to 4 bar.