

SOCKET EXTENSION ROTARY TORQUE SENSORS

WITH 1/4", 3/8", AND 1/2" DRIVES



TQ502A Series



TQ502A-600, shown smaller than actual size.



Front view



Back view

- ✓ Ideal for Use with Production Fastening Applications
- ✓ Bi-directional Measurement
- ✓ Ideal for Use with Drive/Socket Systems
- ✓ Used for Static or Dynamic Torque Measurement

Dimensions: mm (inch)

X	Y	Z
95 (3.75)	9.7 (0.38)	89 (3.5)
95 (3.75)	9.7 (0.38)	89 (3.5)
101 (3.97)	12 (0.48)	91 (3.6)
101 (3.97)	12 (0.48)	91 (3.6)
108 (4.26)	15 (0.58)	94 (3.7)
108 (4.26)	15 (0.58)	94 (3.7)

SPECIFICATIONS

Rated Output: 1.5 to 3 mV/V nominal (calibration sheet provided)

Excitation: 20 Vdc maximum

Linearity: ±0.10% FS

Hysteresis: ±0.10% FS

Repeatability: ±0.1% FS

Zero Balance: ±1.0% FS

Operating Temp Range: -55 to 120°C (-65 to 250°F)

Compensated Temp Range: 21 to 75°C (70 to 167°F)

Thermal Effects:

Zero: ±0.002% FS/°F

Span: ±0.002% rdg/°F

Overload Capacity: 150% FS

Bridge Resistance: 1000 Ω

Maximum rpm: 5000

Construction:

Sensor: Alloy steel

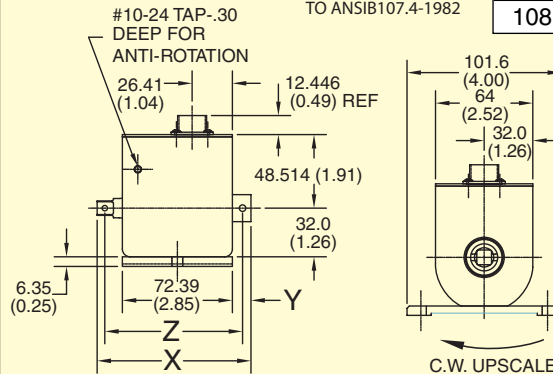
Housing: Alloy aluminum

Electrical: Mating connector supplied

OPTIONS

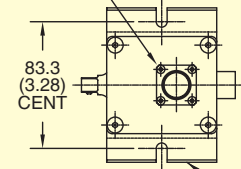
ORDER SUFFIX	DESCRIPTION
-MB	Mounting foot
-EN1024	1024 ppr angle encoder

Dimensions: mm (inch)



SQUARE DRIVING & PINDAL ENDS ADHERE TO ANSIB107.4-1982

PT02E-12-10P CONNECTOR MATING CONNECTOR SUPPLIED



OPTIONAL FOOT MOUNT WITH CLEARANCE SLOTS FOR (2) 1/4 SCREWS

C.W. UPSCALE

To Order Visit omega.com/tq502a for Pricing and Details

MODEL NO.	CAPACITY			DRIVE (SQUARE)	OUTPUT	COMPATIBLE METERS*
	in lb	ft lb	NM			
TQ502A-50	50	4	6	1/4"	2.0 mV/V	DP41-S, DP25B-S, MDS-41S
TQ502A-125	125	10	14	1/4"	2.0 mV/V	DP41-S, DP25B-S, MDS-41S
TQ502A-200	200	16	23	3/8"	1.5 mV/V	DP41-S, DP25B-S, MDS-41S
TQ502A-600	600	50	68	3/8"	3.0 mV/V	DP41-S, DP25B-S, MDS-41S
TQ502A-1.5K	1500	125	170	1/2"	3.0 mV/V	DP41-S, DP25B-S, MDS-41S
TQ502A-2.4K	2400	200	271	1/2"	3.0 mV/V	DP41-S, DP25B-S, MDS-41S

Comes complete with operator's manual and calibration data sheet.

* Visit omega.com for complete details.

Ordering Examples: TQ502A-600, socket extension rotary torque sensor with 3/8" square drive, 0 to 600 in-lb range.

TQ502A-125, socket extension rotary torque sensor with 1/4" square drive, 0 to 125 in-lb range.