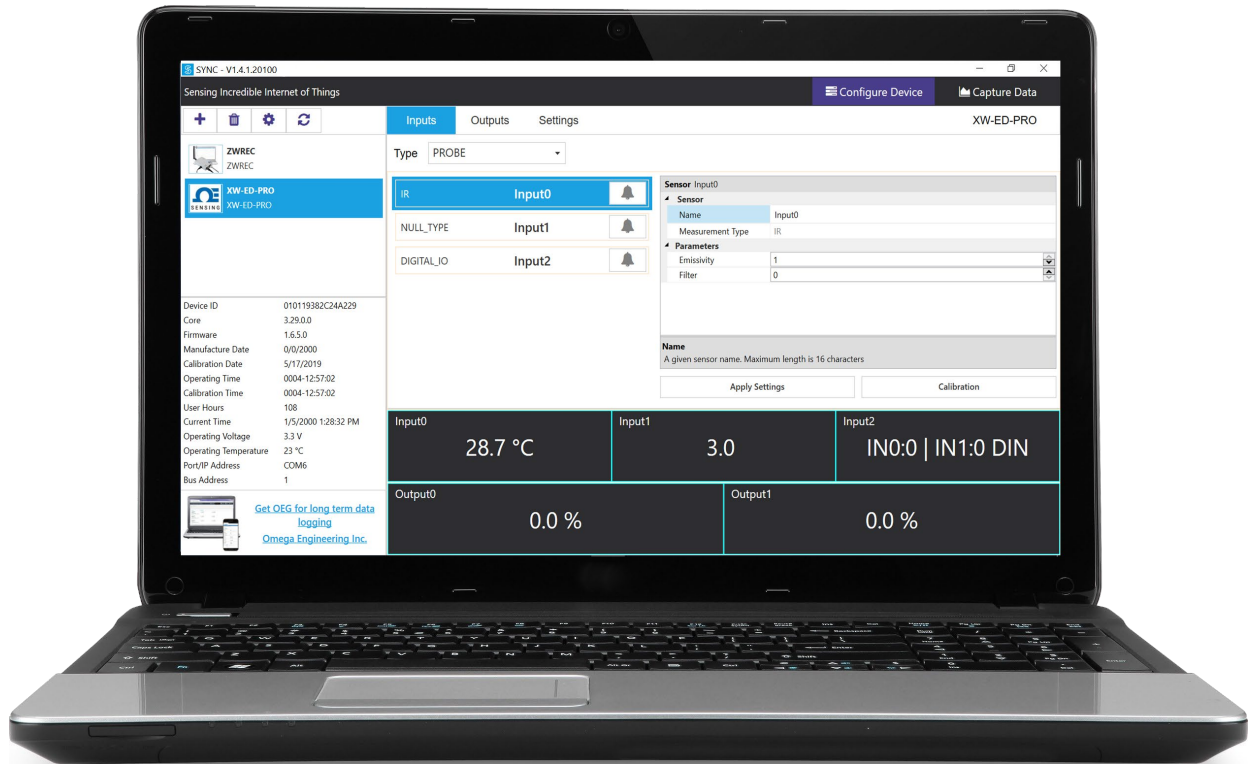


SYNC - Omega Device Configuration Software



User's Manual



U.S.A. Headquarters:

Servicing North America:

Omega Engineering, Inc.
Toll-Free: 1-800-826-6342 (USA & Canada only)
Customer Service: 1-800-622-2378 (USA & Canada only)
Engineering Service: 1-800-872-9436 (USA & Canada only)
Tel: (203) 359-1660 Fax: (203) 359-7700
e-mail: info@omega.com

For Other Locations Visit omega.com/worldwide

The information contained in this document is believed to be correct, but OMEGA accepts no liability for any errors it contains and reserves the right to alter specifications without notice.

OMEGA's policy is to make running changes, not model changes, whenever an improvement is possible. This affords our customers the latest in technology and engineering. OMEGA is a registered trademark of OMEGA ENGINEERING, INC. © Copyright 2017 OMEGA ENGINEERING, INC. All rights reserved. This document may not be copied, photocopied, reproduced, translated, or reduced to any electronic medium or machine-readable form, in whole or in part, without the prior written consent of OMEGA ENGINEERING, INC.

M6746-0420

Table of Contents

INTRODUCTION	3
LICENSING	3
USE SCENARIOS.....	3
<i>Device Configuration</i>	3
<i>Short-Term Data Graphing</i>	3
INSTALLATION	4
WINDOWS 7 AND USB INTERFACE INSTALLER	4
CONFIGURE DEVICE INTERFACE	5
MENU TABS.....	5
DEVICE AUTO DETECTION	5
LIST OF DEVICES	5
DEVICE ATTRIBUTES	5
CONFIGURATION PANEL.....	6
MEASUREMENT VALUE PANEL	6
ADD OR DELETE DEVICE BUTTON	6
SYSTEM SETTINGS	6
RECONNECT.....	7
CONFIGURING SMART PROBES AND WIRELESS DEVICES.....	8
INPUTS.....	8
<i>Setting Alarms</i>	8
OUTPUTS	9
<i>Configuring ON/OFF Control</i>	9
DEVICE SETTINGS.....	9
CONFIGURING PID CONTROLLERS AND PROCESS METERS	10
CN616.....	10
DP612	10
CAPTURE DATA INTERFACE	11
APPENDIX A - EULA	11

Introduction

SYNC by Omega is a device configuration and management software platform for qualifying Omega Smart devices. It allows users to configure device runtime parameters, view process values, export data, and allows you to efficiently set your devices to operate under your preferred preferences. SYNC does not support long-term process value storage. We recommend Omega Enterprise Gateway (OEG) software for long-term data logging and analytics. OEG web client is platform independent.

SYNC can be installed on Windows® 10. The minimum hardware requirements for server installation are: Dual core: CPU 2.4 GHz or up; Memory: 4 GB or up; Hard drive: 250 GB or up.

Licensing

SYNC is free to all customers who use Omega devices. The software is governed by Omega's EULA and is also subject to open source licensing. Please see **Appendix A: EULA** for more information.

Use Scenarios

SYNC is the premier device configurator for Omega Smart products. The use scenarios for the software are outlined below:

Device Configuration

SYNC provides a universal interface for the efficient configuration of qualifying Omega devices. For further information regarding a specific Smart Core device, users should refer to the device User's Manual.

Short-Term Data Graphing

Under certain circumstances, users may want to capture device process values to ensure that the device configuration is done correctly. SYNC supports short-term data trend viewing and export. For long-term data capture, consider using Omega Enterprise Gateway.

Installation

The SYNC zip file contains the installer package for the software. Follow these steps to complete the installation process:

Step 1: Unzip and open the SYNC file downloaded from the Omega website.

Note: Included in the installer package are the SYNC Application Files, .msi installer file, User's Manual, Release Notes, License and Copyright Notice, and End User License Agreement.

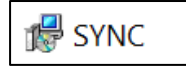


Figure 1

Step 2: Click the **SYNC.msi** file (**Figure 1**) and proceed through the setup (**Figure 2**) to launch SYNC for the first time.

Note: A desktop shortcut icon of SYNC (**Figure 3**) is created after the installation. This shortcut will launch the software after the initial installation.

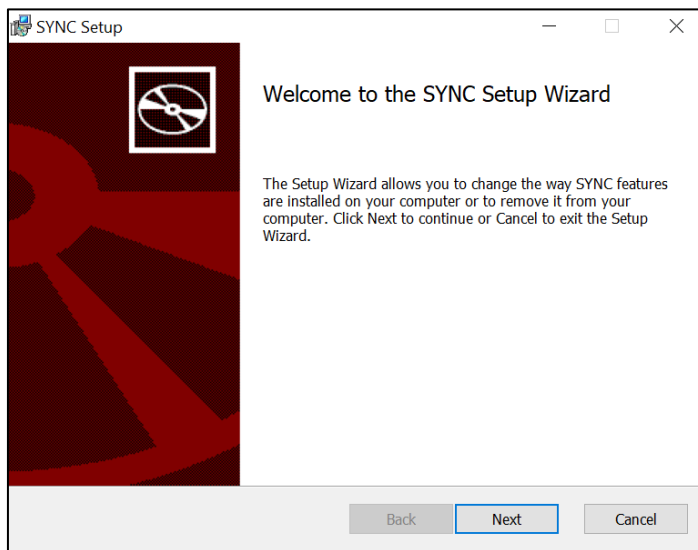


Figure 2



Figure 3

Windows 7 and USB Interface Installer

For Windows 7 users who will be connecting an IF-001 USB Smart Interface cable or a Platinum USB Interface to SYNC, an ***OmegaVCP.inf*** text file needs to be installed by copying the text file into your ***C:/Windows/inf/*** folder. The OmegaVCP.inf file is included in your installer package.

Important: It is **required** for Windows 7 users to install the OmegaVCP.inf file to properly connect a USB interface to SYNC configuration software. Administrator access is required to install this file to your computer.

Configure Device Interface

Menu Tabs

SYNC has two menu interfaces:

- **Configure Device:** Allows you to configure your software adjustable devices.
- **Capture Data:** Provides short-term data logging features.

The blank Configure Device interface is the first view you see after SYNC is launched. Once a device is connected, you will see an interface like the one displayed in **Figure 4**.

Device Auto Detection

Omega Smart devices will be automatically detected once they are plugged in to the computer running the SYNC software. For instructions on how to connect a specific device to SYNC, please refer to the user documentation associated with that device.

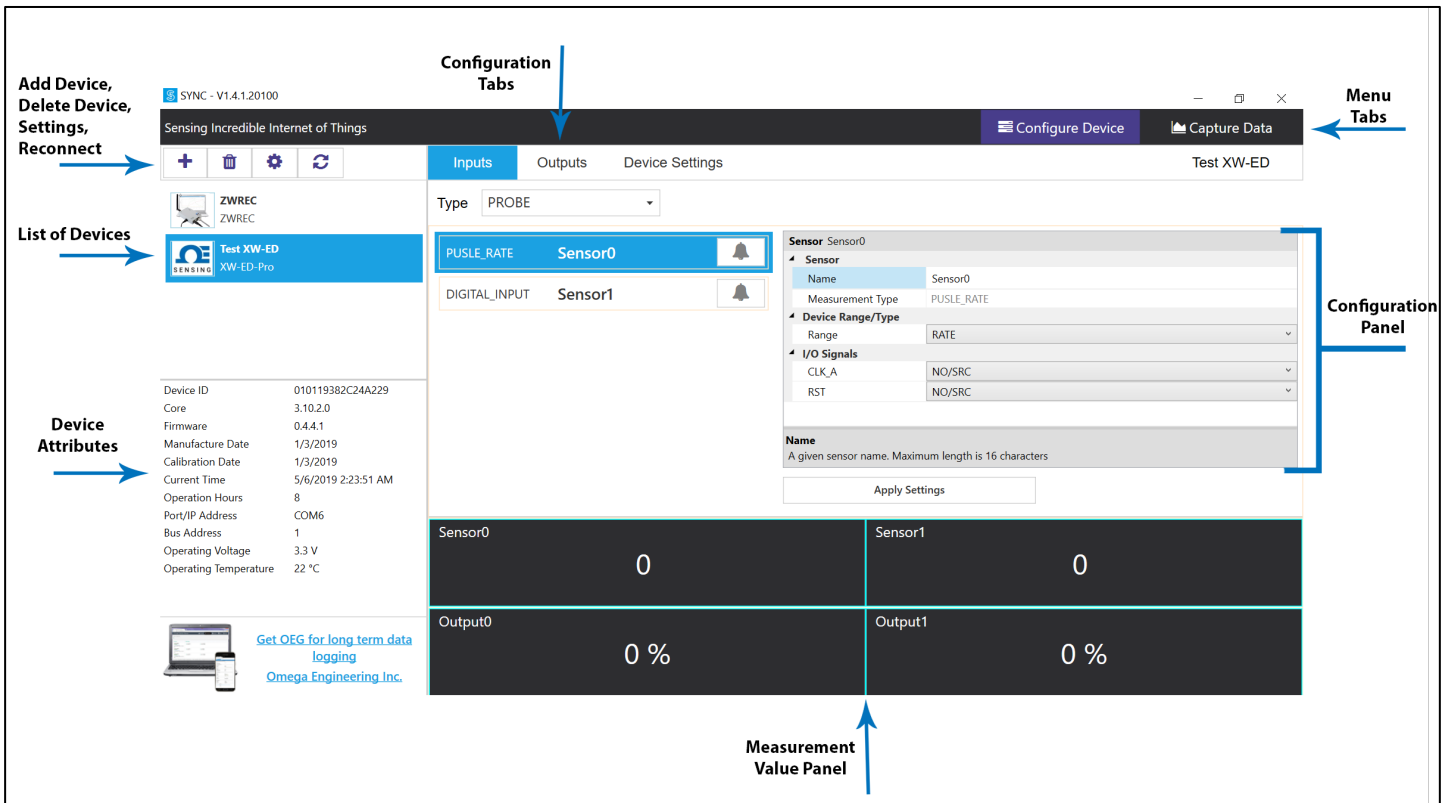


Figure 4

Note: The **Configure Device** interface may look differently than the one displayed in **Figure 4** depending on the product that is connected.

List of Devices

This section of the interface lists all the devices connected to SYNC. For each connected device, the assigned name and the product name will be displayed. The device name consists of COM port, device address, and model. Users can switch between devices in the list to configure or capture data.

You may right click the device to **Rename** and **Refresh** your device. Users may choose to refresh the device this way should a quick device reboot be necessary.

Device Attributes

The **Device Attributes** list will appear when you click on a device from the Device List section (**Figure 4**).

Configuration Panel

The configuration of connected devices takes place in the **Configuration Panel**. The Configuration Panel settings and parameters will vary depending on the product that is connected. The configuration panel displays the software adjustable parameters of the Omega device.


Measurement Value Panel

The **Measurement Value Panel** displays the value that the device has been configured to measure. Alarm status and active zone status are indicated in colors:

- **Black:** A normal reading is being displayed.
- **Red:** An alarm condition has been triggered.
- **Gray:** The reading zone has been disabled.

Note For more information on how to set alarms on your device, see the section titled **Setting Alarms**.

Add or Delete Device Button

Clicking the Add Device icon  (Figure 4) will lead to a wizard that guides you through the process of adding a device to SYNC.

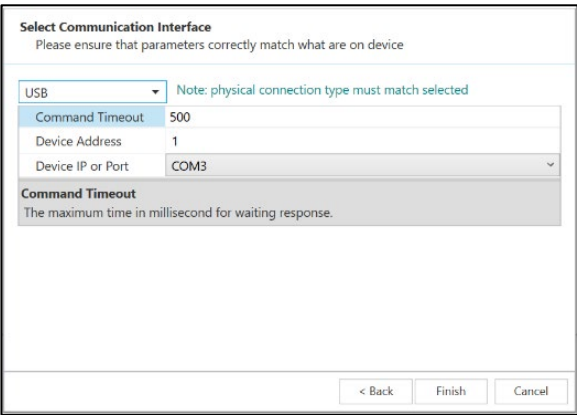


Figure 5a

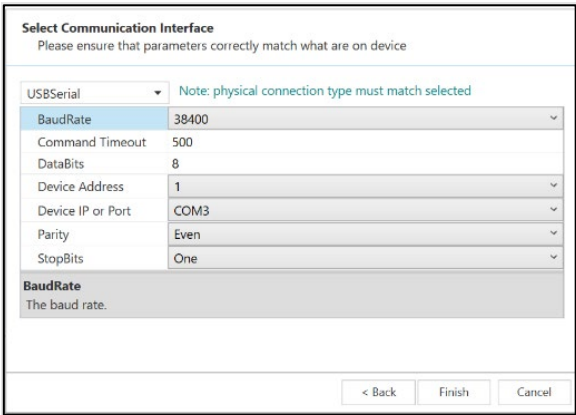



Figure 5b

Default interface settings are provided in the wizard for USB (Figure 5a) and USB Serial Communication Interface (Figure 5b). Please refer to your device User’s Manual for other communication interface setting options if default settings are not applicable.

The device can be deleted by clicking the Delete icon  (Figure 4).

System Settings

The System Settings icon  allows the user to customize the **Behaviors** and **Display Units** of SYNC.

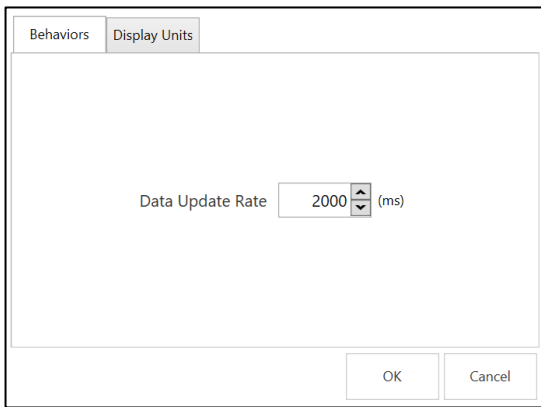


Figure 6a

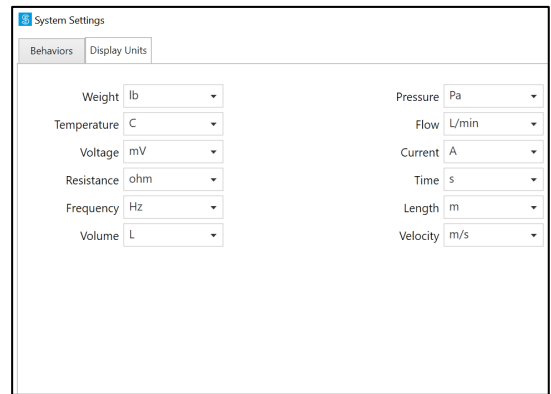



Figure 6b

The **Behaviors** tab (**Figure 6a**) manages the **Data Update Rate**: the frequency at which the system pulls information from the device in milliseconds. The **Display Units** tab (**Figure 6b**) allows the user to globally customize the units of measure displayed for various values.

Note The sensors are permanently set to measure SI units. By changing the **Display Units** on SYNC, you are only changing the units displayed on SYNC, not in the sensor itself. Not all configurable global settings that are available for Smart Probes will be available for PID Controllers and Process Meters.

Reconnect

The **Reconnect** button  attempts to connect devices that may not have been auto-detected.

Configuring Smart Probes and Wireless Devices

SYNC allows users to configure qualifying Smart Probes and Wireless Devices. To configure these settings, you must have a Smart Probe or Wireless Device connected to SYNC. Click on the Smart Probe or Wireless Device you would like to customize from your **List of Devices**.

The **Configuration Tabs** allow the user to switch between the device Inputs, Outputs, and Settings interface. Refer to the device specific User’s Manual for the software adjustable inputs, outputs, and settings available on your device.

- **Inputs:** Displays configuration options for device inputs.
- **Outputs:** Displays configuration options for device outputs.
- **Settings:** Displays configuration options for the device settings and system functions.

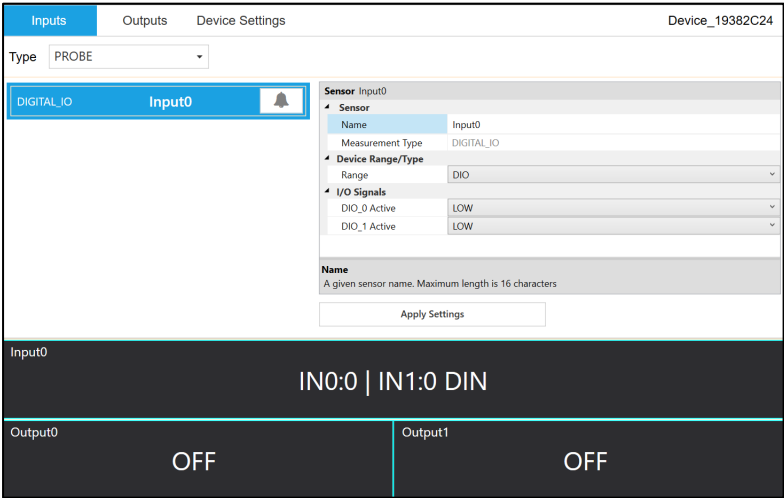



Figure 7

Inputs

To configure the inputs of your Wireless Device or Smart Probe, begin by navigating to the Inputs **Configuration Tab** and select your Input **Type** from the dropdown. Settings are adjusted on an interface that allows for full configuration of the device as seen in **Figure 7**.

Setting Alarms

SYNC allows users to set alarm conditions that notify the user when said conditions are met. The alarm feature is only available on qualifying products. The alarm icon  is located to the right of the input name in the configuration interface. Clicking the alarm icon will take you to the Define Alarm dialog box as seen in **Figure 8**.

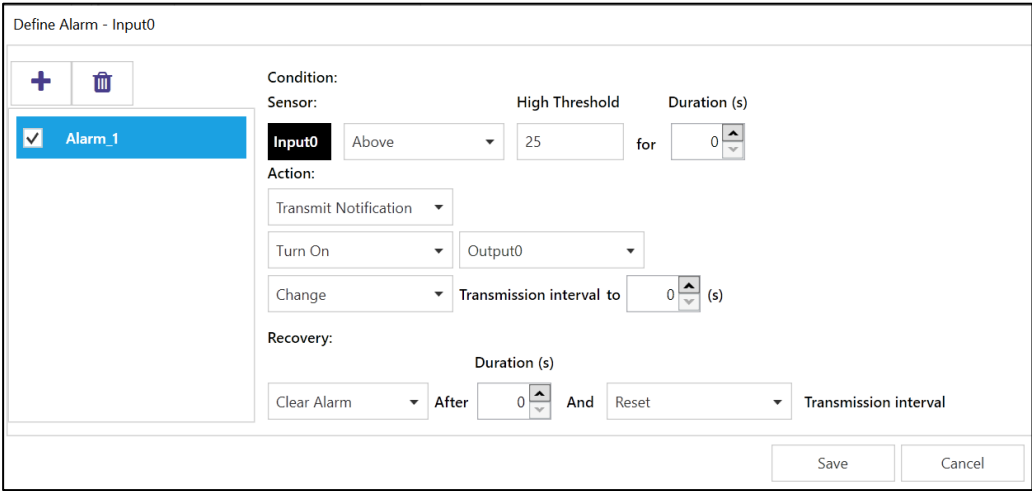



Figure 8


Once the conditions for your alarm have been set, click the Plus icon  to add the alarm to your list of active alarms, and click **Save** to finalize.

Outputs


To configure the outputs of your Wireless Device or Smart Probe, begin by navigating to the Outputs **Configuration Tab**. Settings are adjusted on an interface that allows for full configuration of the device.

Configuring ON/OFF Control

Note **Note:** Only devices that specifically offer digital outputs may configure ON/OFF Control or PWM.

To configure ON/OFF Control on a device, navigate to the **Output** configuration tab and click on the  icon located to the right of the available outputs. Clicking the icon will open the **Define ON/OFF Control** dialog box as seen in **Figure 9**. Choose the Input with the active alarm that you would like to control and set your preferred parameters.

Once the ON/OFF Control parameters have been set, click **Save** to Finalize the settings.

 **Warning:** ON/OFF Control configurations will be erased if the **Input Type** is changed. If the Input Type is changed, ON/OFF Control parameters must be redefined.

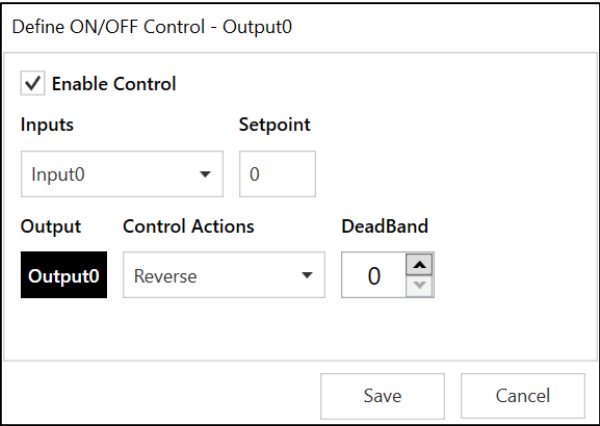
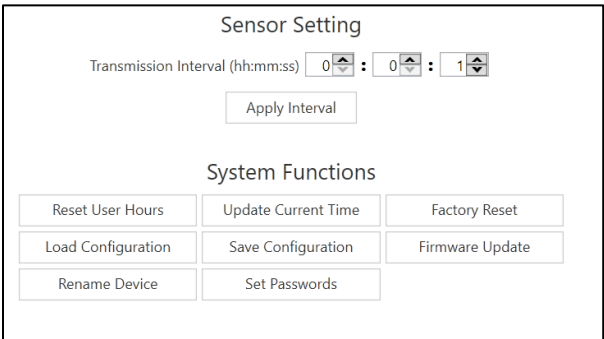


Figure 9

Device Settings

The system functions may vary depending on the device connected.

- **Sensor Setting:** Controls the transmission interval of the device.
- **Reset User Hours:** Resets the user hours to zero as displayed in the Device Attributes.
- **Load Configuration:** Allows the user to load a previously configured .json file to your device via Omega Sync.
- **Firmware Update:** Allows the user to upload and update the firmware¹ of the device.
- **Update Current Time:** Syncs the sensor time with the current time displayed on your computer.
- **Save Configuration:** Allows the user to save the current configuration on Omega Sync as a .json file.
- **Rename Device:** Allows the user to rename the device.
- **Factory Reset:** Resets the device to its factory settings.
- **Set Passwords:** Protects the SYNC configuration of your device behind a password. Once a password has been set, unplug the device and plug it back in to implement the password protection.



Note **Note:** Some additional functions not listed here may be device exclusive. For more information on these functions, refer to your device User’s Manual.

¹ The user must already have the updated firmware file saved to their computer.

Configuring PID Controllers and Process Meters



Important: The following information only applies when connecting qualifying PID Controllers and Process Meters. Not all configurable global settings that are available for Smart Probes will be available for PID Controllers and Process Meters.

SYNC allows users to configure qualifying PID Controllers and Process Meters (CN6xx, DP6xx, etc.) To configure these settings, you must have a PID controller or Process Meter connected to SYNC. Click on the PID Controller or Process Meter you would like to customize from your **List of Devices**.

PID Controller / Process Meter settings are adjusted on an interface that allows for full configuration as seen in **Figure 10**.

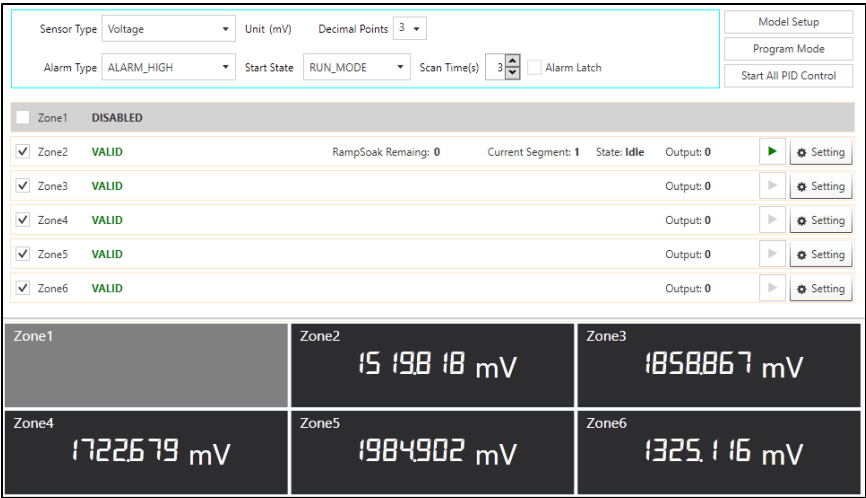


Figure 10

CN616

The Omega CN616 PID Controller allows for the customization of PID Control, Alarms, and Scaling Factor. To access these features, click on **Settings** for the **Zone** that you wish to adjust.

Click **Apply** to finalize your changes.

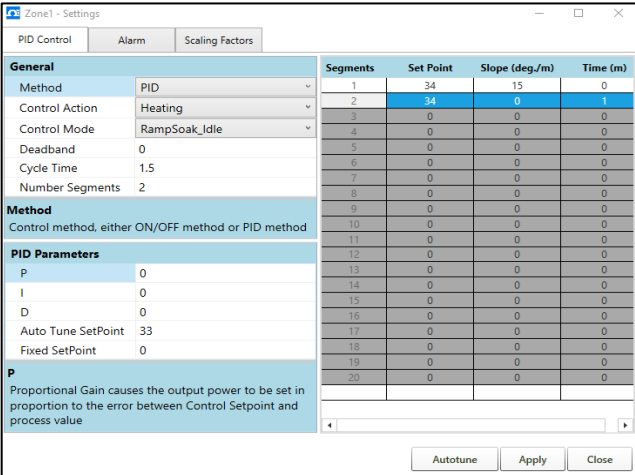


Figure 11

DP612

The Omega DP612 PID Controller allows for the customization of Alarms. To access these features, click on **Settings** for the **Zone** that you wish to adjust.

Click **Apply** to finalize your changes.

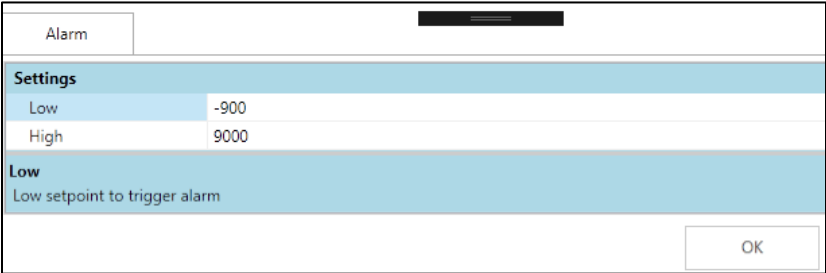





Figure 12

Capture Data Interface

The Capture Data interface provides a chart that displays real-time data from connected devices. Additionally, the **Capture Data** interface contains the following features:

Extract Data		Extracts data from the device data logger.
Start/Stop Recording		Toggles the real-time data display to on/off.
Export Data to CSV File		Gathers the data that has been recorded or extracted and saves it in a CSV file.

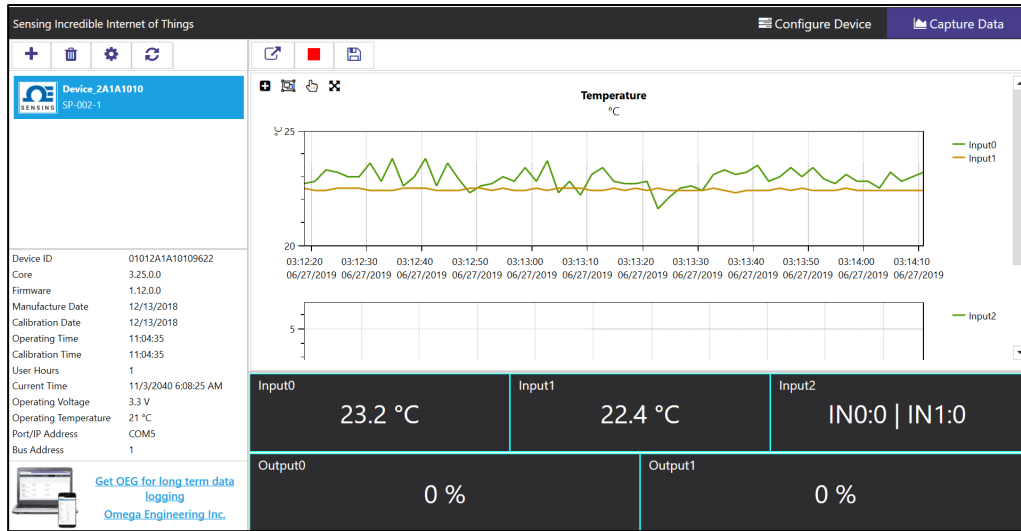






Figure 13

Note: Data will be reset if the user switches to the Configure Device interface. SYNC's **Data Capture** feature is for short-term data logging. For long-term data logging, we recommend Omega Enterprise Gateway software.

SYNC provides four ways to navigate the Capture Data Interface:

Zoom by Rectangle		Allows the user to left click and drag the mouse across the graphed data to create a rectangle that will be zoomed in on.
Zoom by Middle Mouse Wheel		Allows the user to zoom in and out of the graphed data using the middle mouse wheel. This only applies to users have a mouse with the necessary mouse wheel feature.
Pan by Left Mouse Button		Allows the user to left click and drag on the graphed data to navigate in the direction of the mouse.
Reset		Resets the graphed data to the original position.

Appendix A - EULA

OMEGA ENGINEERING, INC. LICENSE AGREEMENT

*** IMPORTANT ***

READ CAREFULLY BEFORE USING THE SOFTWARE.

BEFORE YOU CHECK IN THE "I accept the terms of this agreement" BOX AT THE BOTTOM OF THIS DIALOG BOX, CAREFULLY READ THE TERMS AND CONDITIONS OF THIS AGREEMENT. BY CHECK IN THE "I accept the terms of this agreement" BOX, YOU ARE CONSENTING TO BE BOUND BY AND ARE BECOMING A PARTY TO THIS AGREEMENT. IF YOU DO NOT AGREE TO ALL OF THE TERMS OF THIS AGREEMENT, UNCHECK IN THE CHECKBOX HERE AND DO NOT USE THE SOFTWARE.

1. OMEGA ENGINEERING, INC. grants to you a non-exclusive, non-sub licensable, non-transferable license to use this version of the OMEGA ENGINEERING, INC. software. (the "Software").
2. OMEGA ENGINEERING, INC. makes no representations about the suitability of this software or about any content or information made accessible by the software, for any purpose. The software is provided 'as is' without express or implied warranties, including warranties of merchantability and fitness for a particular purpose or no infringement. This software is provided gratuitously and, accordingly, omega engineering, Inc. Shall not be liable under any theory for any damages suffered by you or any user of the software. Omega engineering, Inc. Will not support this software and will not issue updates to this software.
3. Title, ownership rights, and intellectual property rights in and to the Software shall remain in OMEGA ENGINEERING, INC. and/or its suppliers. You agree to abide by the copyright law and all other applicable laws of the United States including, but not limited to, export control laws, and the laws of any other applicable jurisdiction. You acknowledge that the Software is source code form remains a confidential trade secret of OMEGA ENGINEERING, INC. and/or its suppliers and therefore you agree not to modify the Software or attempt to decipher, decompile, disassemble or reverse engineer the Software, except to the extent applicable laws specifically prohibit such restriction.
4. OMEGA ENGINEERING, INC. may terminate this License at any time by delivering notice to you and you may terminate this License at any time by destroying or erasing your copy of the Software. Upon termination of this License, you agree to destroy or erase the Software. In the event of termination, the following sections of this License will survive: 2, 3, 4, 5, 6 and 7. This License is personal to you and you agree not to assign your rights herein. This License shall be governed by and construed in accordance with the laws of the State of Delaware, United States of America, and, as to matters affecting copyrights, trademarks and patents, by U.S. federal law. This License sets forth the entire agreement between you and OMEGA ENGINEERING, INC.
5. License to the Government: If the Software or Documentation are acquired by or on behalf of a unit or agency of the United States Government, the Government agrees that such Software or Documentation is "commercial computer software" or "commercial computer documentation" and that, absent a written agreement to the contrary, the government's rights with respect to such Software or Documentation are limited by the terms of this License, pursuant to FAR 12.212(a) and/or DFARS 227.7202-1(a), as applicable.
6. You may not use or otherwise export or reexport the Software or any underlying information or technology except in full compliance with all United States and other applicable laws and regulations. In particular, but without limitation, none of the Software or underlying information or technology may be downloaded or otherwise exported or reexported (i) into (or to a national or resident of) Cuba, Iran, Iraq, Libya, North Korea, Sudan, or Syria or (ii) to anyone on the US Treasury Department's list of Specially Designated Nationals or the US Commerce Department's Denied Persons List. By accepting the terms and conditions of this Agreement, you are agreeing to the foregoing and you are representing and warranting that you are not located in, under control of, or a national or resident of any such country or on any such list.

7. OMEGA ENGINEERING, INC. or its suppliers shall not be liable for (a) incidental, consequential, special or indirect damages of any sort, whether arising in tort, contract or otherwise, even if omega engineering, Inc. Has been informed of the possibility of such damages, or (b) for any claim by any other party. This limitation of liability shall not apply to liability for death or personal injury to the extent applicable law prohibits such limitation. Furthermore, some states do not allow the exclusion or limitation of incidental or consequential damages, so this limitation and exclusion may not apply to you.

8. HIGH RISK ACTIVITIES. THE Software is not fault-tolerant and is not designed, manufactured or intended for use or resale as on-line control equipment in hazardous environments requiring fail-safe performance, such as in the operation of nuclear facilities, aircraft navigation or communication systems, air traffic control, direct life support machines, or weapons systems, in which the failure of the Software could lead directly to death, personal injury, or severe physical or environmental damage ("High Risk Activities"). OMEGA ENGINEERING, INC. and its suppliers specifically disclaim any express or implied warranty of fitness for High Risk Activities.