

Adjustable Depth Thermocouples

TWO STYLES!

- ✓ Locking Fitting Freely Adjustable Over Flexible Armor
- ✓ Spring-Action Catch Holds Probe Firmly in Place

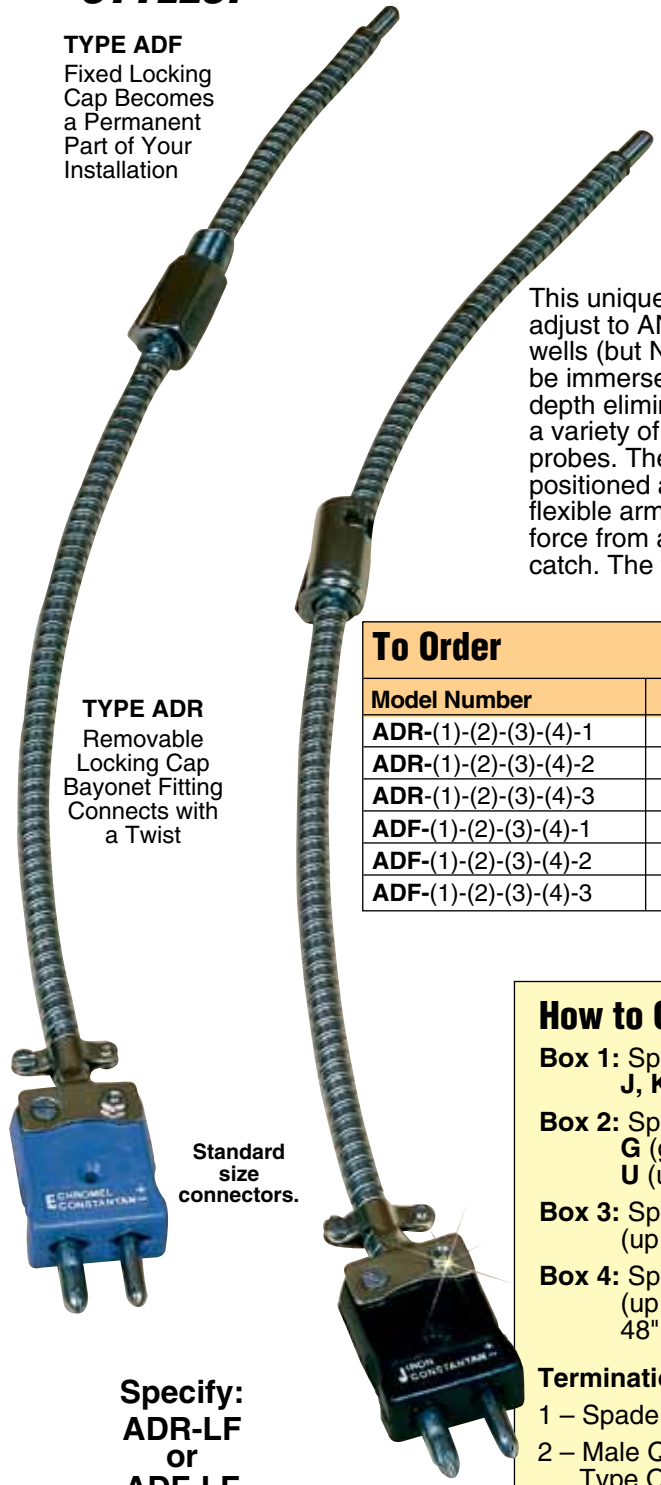
TYPE ADF
Fixed Locking Cap Becomes a Permanent Part of Your Installation

This unique thermocouple is easy to adjust to ANY immersion depth into wells (but NOTE: this probe cannot be immersed in liquids). Adjustable depth eliminates the need to stock a variety of fixed depth immersion probes. The locking cap can be positioned anywhere along the flexible armor and obtains its locking force from a unique spring-action catch. The welded stainless steel

tipped probe is held against the bottom of the well by compression of the armor.

Two styles are available. Style ADF has a unique locking fitting that mounts permanently to your equipment. The quick release action of the locking fitting allows fast installation and removal of the probe.

Style ADR has a removable locking fitting and requires a BTA adapter. This style is ideal for installations where the mounting surface is under a layer of insulation, or where the locking cap must be removable.



TYPE ADR
Removable Locking Cap Bayonet Fitting Connects with a Twist

Standard size connectors.

Specify: **ADR-LF** or **ADF-LF**

To Order	
Model Number	Termination Style
ADR-(1)-(2)-(3)-(4)-1	1
ADR-(1)-(2)-(3)-(4)-2	2
ADR-(1)-(2)-(3)-(4)-3	3
ADF-(1)-(2)-(3)-(4)-1	1
ADF-(1)-(2)-(3)-(4)-2	2
ADF-(1)-(2)-(3)-(4)-3	3

How to Order

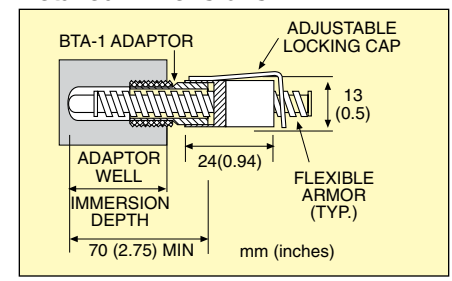
- Box 1:** Specify Calibration: **J, K, T** or **E**
- Box 2:** Specify Junction: **G** (grounded) or **U** (ungrounded)
- Box 3:** Specify "A" Dimension (up to 3")
- Box 4:** Specify "B" Dimension (up to 48"), over 48", for an additional cost

Termination Styles:

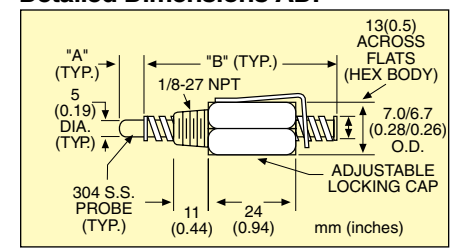
- 1 – Spade Lugs
- 2 – Male Quick Disconnect Type OST
- 3 – Female Quick Disconnect Type OST

Ordering Example: *ADR-J-G-1/2-12-2.*
Removable locking cap probe, Type J, grounded junction, 0.5" A dimension, 12" B dimension, male quick disconnect termination.

Detailed Dimensions ADR

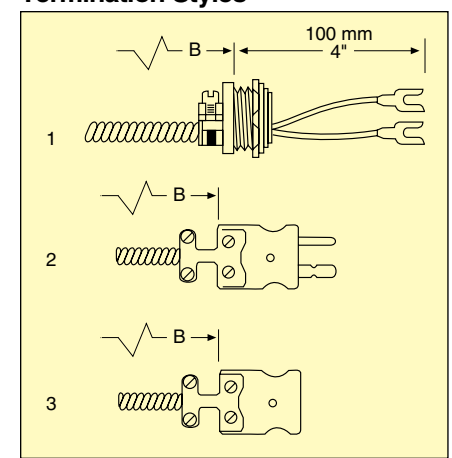


Detailed Dimensions ADF



Design subject to change as engineering improvements permits.

Termination Styles



Discount Schedule	
1-10 Units	Net
11-24 Units	.5%
25-49 Units	10%
50 Units or more	15%