

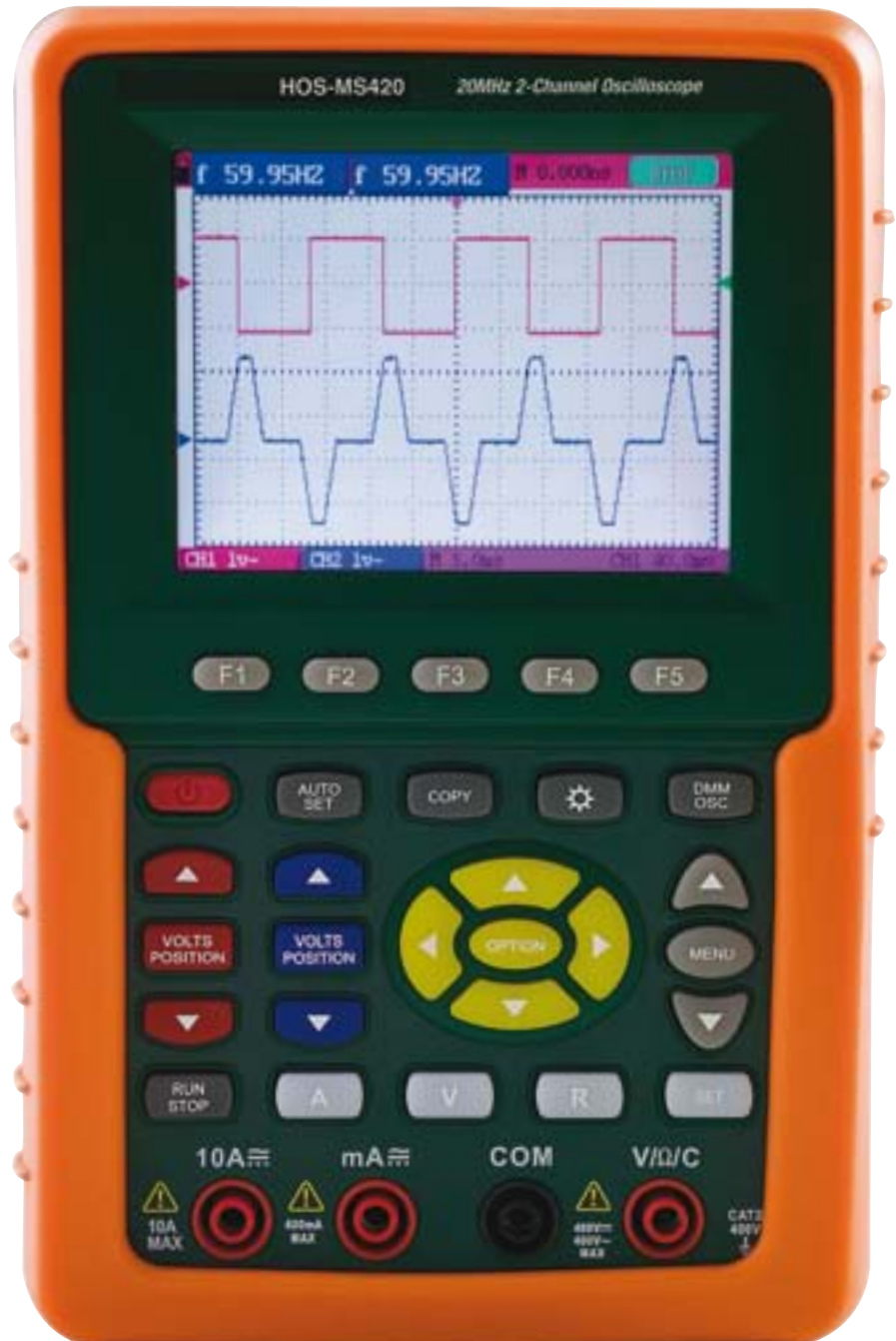


20 MHz 2-Channel Digital Oscilloscope

HOS-MS420



- ✓ 20 MHz Bandwidth
- ✓ Auto-Set Function
Optimizes the Position, Range, Timebase, and Triggering to Assure a Stable Display of Virtually Any Waveform
- ✓ Peak Detect Function for 50 ns Glitch Capture
- ✓ XY Mode
- ✓ FFT Function to View Component Frequencies
- ✓ Trigger Holdoff Function Stabilizes Complex Waveforms
- ✓ Twenty Automatic Measurements
- ✓ Waveform Math: Add, Subtract, Multiply, and Divide
- ✓ Average Mode for Smoothing Waveforms
- ✓ Persistence Mode for Observing Dynamic Signals
- ✓ Store and Recall up to 4 Waveform Screens and Setups
- ✓ USB Interface and Software for Transferring Waveforms and Data



HOS-MS420 shown actual size.

The HOS-MS420 Series digital oscilloscope is ideal for the plant, maintenance, trouble shooting, test benches and many industrial applications. The HOS-MS420 features a 96 mm (3.8") color LCD.

The HOS-MS420 is also a true RMS multimeter which includes functions such as the measurement of resistance, capacitance, voltage, and current.

The HOS-MS420 can display waveforms and data on your PC via the USB interface. This oscilloscope/multimeter is a key tool for a variety of applications.

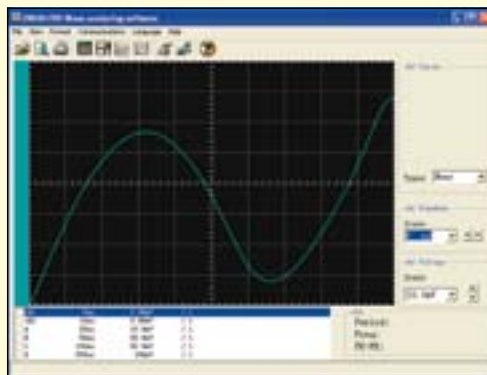


A. Complete with two 1X/10X oscilloscope probes, test leads, Windows® 95/98/NT/2000/ME/XP compatible USB software and cable, capacitor measuring module, adjustment screwdriver, AC adaptor/charger, and hard carrying case.



B. Dual trace testing or troubleshooting of printed circuit boards and electronic assemblies

C. Software PC screens display analog bargraph and graphical waveform.



Specifications

Oscilloscope Functions

Display Size: 96 mm (3.8") color LCD; 320 x 240 pixels

Bandwidth: 20 MHz

Real Time Sample Rate: 100 MS/s

Risetime: 17.5 ns

Channels: 2

Record Length: 6K points per channel

Glitch Capture: 50 ns

Vertical Sensitivity: 5 mV to 5V/div

Vertical Resolution: 8 bits

Timebase Range: 5 ns to 5 s/div

Sample Mode: Sample, average, peak detect

Trigger Modes: Free run, single shot, edge, video

Trigger Source: CH1, CH2

Trigger Coupling: AC, DC

Input impedance: 1M Ω /20 pF

Max Input Voltage: 400V (peak)

Cursor Measurement: Voltage and time

True RMS Multimeter Functions

AC/DC Voltage: 400 mV, 4V, 40V, 400V

AC/DC Current: 40 mA, 300 mA, 20A

Resistance: 400 Ω , 4 K Ω , 40 K Ω , 400 K Ω , 40M Ω

Capacitance: 51.2 nF to 100 μ F

Diode and Continuity: Yes

PC Interface: USB cable (included)

Power Supply: 6 hours Li-ion rechargeable battery; AC adaptor/charger (included)

Dimensions:

180 L x 113 W x 40 mm Dia (7 x 4.4 x 1.6")

Weight: 690 g (24.3 oz)

To Order Visit omega.com/hos-ms420 for Pricing and Details

Model No.	Description
HOS-MS420	20 MHz dual channel digital oscilloscope

Comes complete with two 1X/10X oscilloscope probes, test leads, Windows® 95/98/NT/2000/ME/XP compatible USB software and cable, capacitor measuring module, adjustment screwdriver, AC adaptor/charger, hard carrying case and operator's manual.

Ordering Example: HOS-MS420, 20 MHz dual channel digital oscilloscope.