

# Non-Reversible OMEGALABEL™ Temperature Monitors

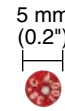


## Micro-Dot Series

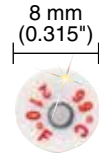
(Model number is °F temperature rating preceded by letters "MD"), MD-(\*)

**Outside Diameter:** 5 mm (0.2")

**Indicating Window:** 1.3 mm (0.05")



Micro-dot labels shown actual size.



Bulls-eye labels shown actual size.

## Bulls-Eye Series

(Model number is temperature rating preceded by letters "BE"), BE-(\*)

**Outside Diameter:** 8 mm (0.315")

**Indicating Window:** 3 mm (0.13")

**Micro-Dot Series and Bulls-Eye Series are available in single temperature ratings listed below:**

°C	38	43	49	52	54	60	66	71	77	79	82	88	93
°F	100	110	120	125	130	140	150	160	170	175	180	190	200
°C	99	104	107	110	116	121	127	132	135	138	143	149	
°F	210	220	225	230	240	250	260	270	275	280	290	300	

To order package of 30, add suffix "-30" to model number.

**Ordering Examples:** BE-210F-30, bulls-eye label, 99°C (210°F), package of 30.

MD-100F-30, micro-dot label, 38°C (100°F), package of 30.

## Specifications

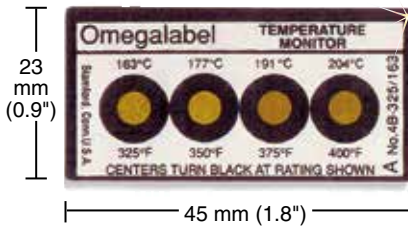
**Accuracy:** Up to 99°C (210°F) is ±1°C (1.8°F); from 100°C (212°F) to 154°C (309°F) is ±1.5°C (2.7°F); from 160°C (320°F) to 280°C (536°F) is ±1% and ±1°C (1.8°F)

Four temperature ratings on each label

**4A:** 5 to 6°C (10°F) between each rating

**4B:** 14°C (25°F) between each rating

**4C:** 28°C (50°F) between each rating



4B-325 shown actual size.

Model No.	Temperature Ratings				
4A-160	°C	71	77	82	88
	°F	160	170	180	190
4A-170	°C	77	82	88	93
	°F	170	180	190	200
4A-180	°C	82	88	93	99
	°F	180	190	200	210
4A-190	°C	88	93	99	104
	°F	190	200	210	220
4A-200	°C	93	99	104	110
	°F	200	210	220	230
4A-210	°C	99	104	110	116
	°F	210	220	230	240
4A-220	°C	104	110	116	121
	°F	220	230	240	250
4A-230	°C	110	116	121	127
	°F	230	240	250	260
4A-240	°C	116	121	127	132
	°F	240	250	260	270
4A-250	°C	121	127	132	138
	°F	250	260	270	280
4A-260	°C	127	132	138	143
	°F	260	270	280	290
4A-270	°C	132	138	143	149
	°F	270	280	290	300
4A-280	°C	138	143	149	154
	°F	280	290	300	310
4A-290	°C	143	149	154	160
	°F	290	300	310	320
4A-300	°C	149	154	160	166
	°F	300	310	320	330
4A-310	°C	154	160	166	171
	°F	310	320	330	340
4A-320	°C	160	166	171	177
	°F	320	330	340	350
4A-330	°C	166	171	177	182
	°F	330	340	350	360
4A-340	°C	171	177	182	188
	°F	340	350	360	370
4A-350	°C	177	182	188	193
	°F	350	360	370	380
4A-360	°C	182	188	193	199
	°F	360	370	380	390
4A-370	°C	188	193	199	204
	°F	370	380	390	400
4B-100	°C	38	52	66	79
	°F	100	125	150	175
4B-125	°C	52	66	79	93
	°F	125	150	175	200

Model No.	Temperature Ratings				
4B-150	°C	66	79	93	107
	°F	150	175	200	225
4B-175	°C	79	93	107	121
	°F	175	200	225	250
4B-200	°C	93	107	121	135
	°F	200	225	250	275
4B-225	°C	107	121	135	149
	°F	225	250	275	300
4B-250	°C	121	135	149	163
	°F	250	275	300	325
4B-275	°C	135	149	163	177
	°F	275	300	325	350
4B-300	°C	149	163	177	191
	°F	300	325	350	375
4B-325	°C	163	177	191	204
	°F	325	350	375	400
4B-350	°C	177	191	204	218
	°F	350	375	400	425
4B-375	°C	191	204	218	232
	°F	375	400	425	450
4B-400	°C	204	218	232	246
	°F	400	425	450	475
4B-425	°C	218	232	246	260
	°F	425	450	475	500
4C-100	°C	38	66	93	121
	°F	100	150	200	250
4C-150	°C	66	93	121	149
	°F	150	200	250	300
4C-200	°C	93	121	149	177
	°F	200	250	300	350
4C-250	°C	121	149	177	204
	°F	250	300	350	400
4C-300	°C	149	177	204	232
	°F	300	350	400	450
4C-350	°C	177	204	232	260
	°F	350	400	450	500
4C-400	°C	204	232	260	288
	°F	400	450	500	550

To order package of 30, add suffix "-30" to model number.

**Ordering Examples:** 4A-100-30, low range temperature label, 38, 43, 49, 54°C (100, 110, 120, 130°F), package of 30.

4C-200-30, low range temperature label, 93, 121, 149, 177°C (200, 250, 300, 350°F), package of 30.

## Specifications

**Accuracy:** Up to 99°C (210°F) is ±1°C (1.8°F); from 100°C (212°F) to 154°C (309°F) is ±1.5°C (2.7°F); from 160°C (320°F) to 280°C (536°F) is ±1% and ±1°C (1.8°F)

## 4A, 4B, 4C Labels (4 Temperatures per label)

Model No.	Temperature Ratings				
4A-100	°C	38	43	49	54
	°F	100	110	120	130
4A-110	°C	43	49	54	60
	°F	110	120	130	140
4A-120	°C	49	54	60	66
	°F	120	130	140	150
4A-130	°C	54	60	66	71
	°F	130	140	150	160
4A-140	°C	60	66	71	77
	°F	140	150	160	170
4A-150	°C	66	71	77	82
	°F	150	160	170	180